

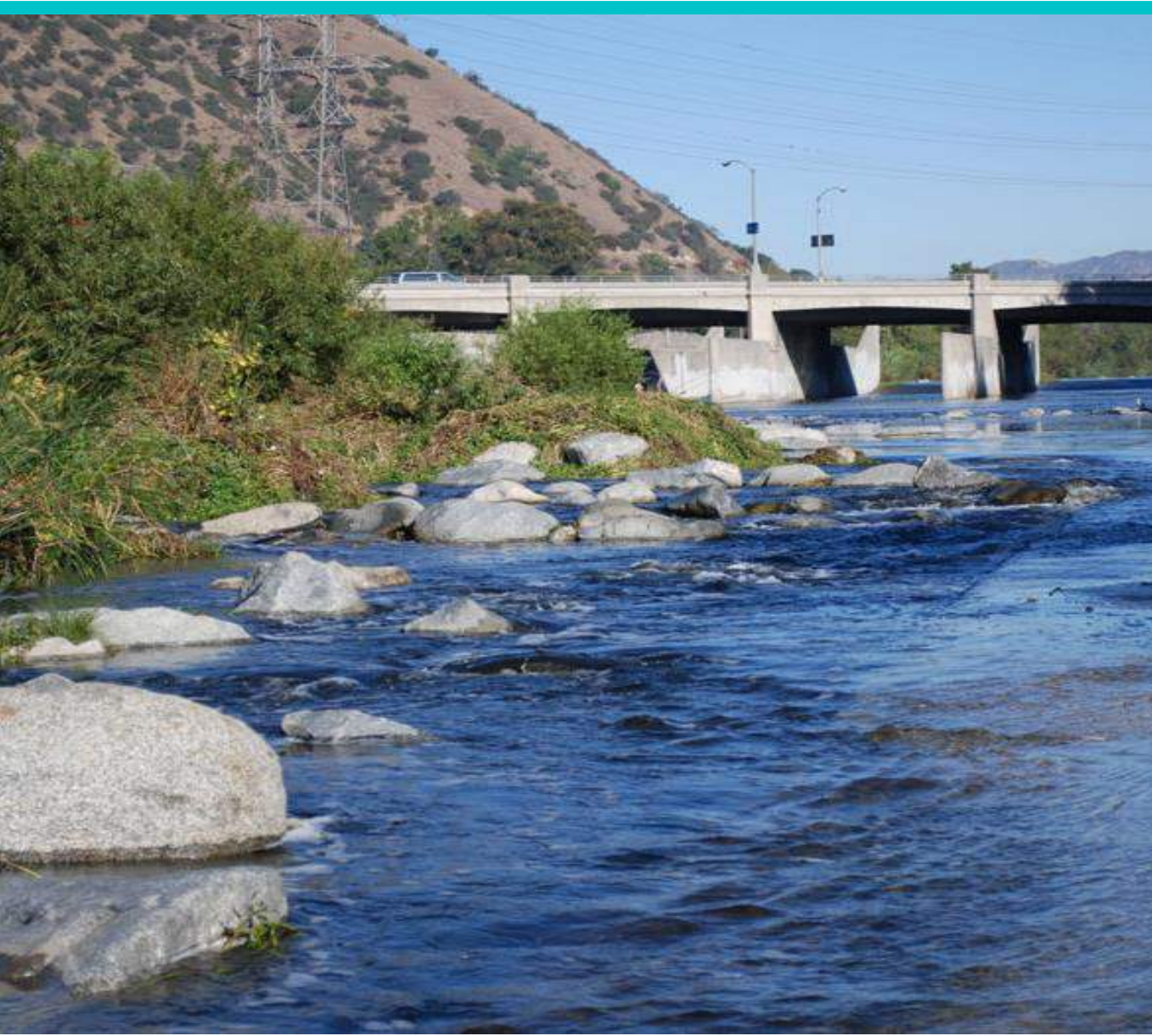


# AB 466: Upper Los Angeles River and Tributaries Revitalization Plan

## People and Recreation Committee

November 15, 2018

# Meeting Agenda



1. Call to Order

2. Roll Call

3. Approval of Minutes

4. Comments from members of the public

5. Staff update

6. AB466 purpose, goals, objectives, and timeline

7. Tributaries overview and characterization

8. Presentation on relevant case studies and best practices

9. Presentation on the City of Los Angeles' Biodiversity Index

10. Committee Member Comments on matters not on the agenda

11. Announcement of future meetings and adjournment





## Item 4. Comments from members of the Public







## Item 5. Staff Update







## Item 6. Discussion of Purpose, Goals, and Objectives





# AB 466 Plan Mission



The mission of the Upper LA River & Tributaries Revitalization Plan is to foster the creation of prioritized opportunities with the following components:

- Open space
- Multi-benefit
- Safe access
- based on community feedback
- Aligned with funding
- Nature based



# AB 466 Upper Los Angeles River and Tributaries Working Group People and Recreation Committee

## Plan Mission Statement

The mission of the Upper LA River & Tributaries Revitalization Plan is to ~~foster~~ <sup>develop</sup> ~~the creation of~~ <sup>propose</sup> prioritized opportunities with the following components:

- Open space
- Multi-benefit
- Safe access
- Aligned with community needs and feedback
- Aligned with funding
- ① • Nature-based
  - Culture and Arts
  - Education



# AB 466 Plan Goals and Objectives

Focus on community engagement especially in underserved communities **with an emphasis on environmental justice**

Focus on Tributaries where there is not already planning or project building efforts

Refer to previous planning efforts whenever possible and fill in gaps, **identify and incorporate inconsistencies**





AB 466 Upper Los Angeles River and Tributaries Working Group  
People and Recreation Committee

**Plan Goals and Objectives**

---

- Focus on community engagement especially in underserved communities with an emphasis on environmental justice
- Focus on Tributaries<sup>Areas</sup> where there is not already planning or project building efforts to expand planning efforts
- Refer to previous planning efforts whenever possible and fill in gaps, identify and <sup>Resolve</sup> incorporate inconsistencies

Plan Obj. ID: 100-TH-1

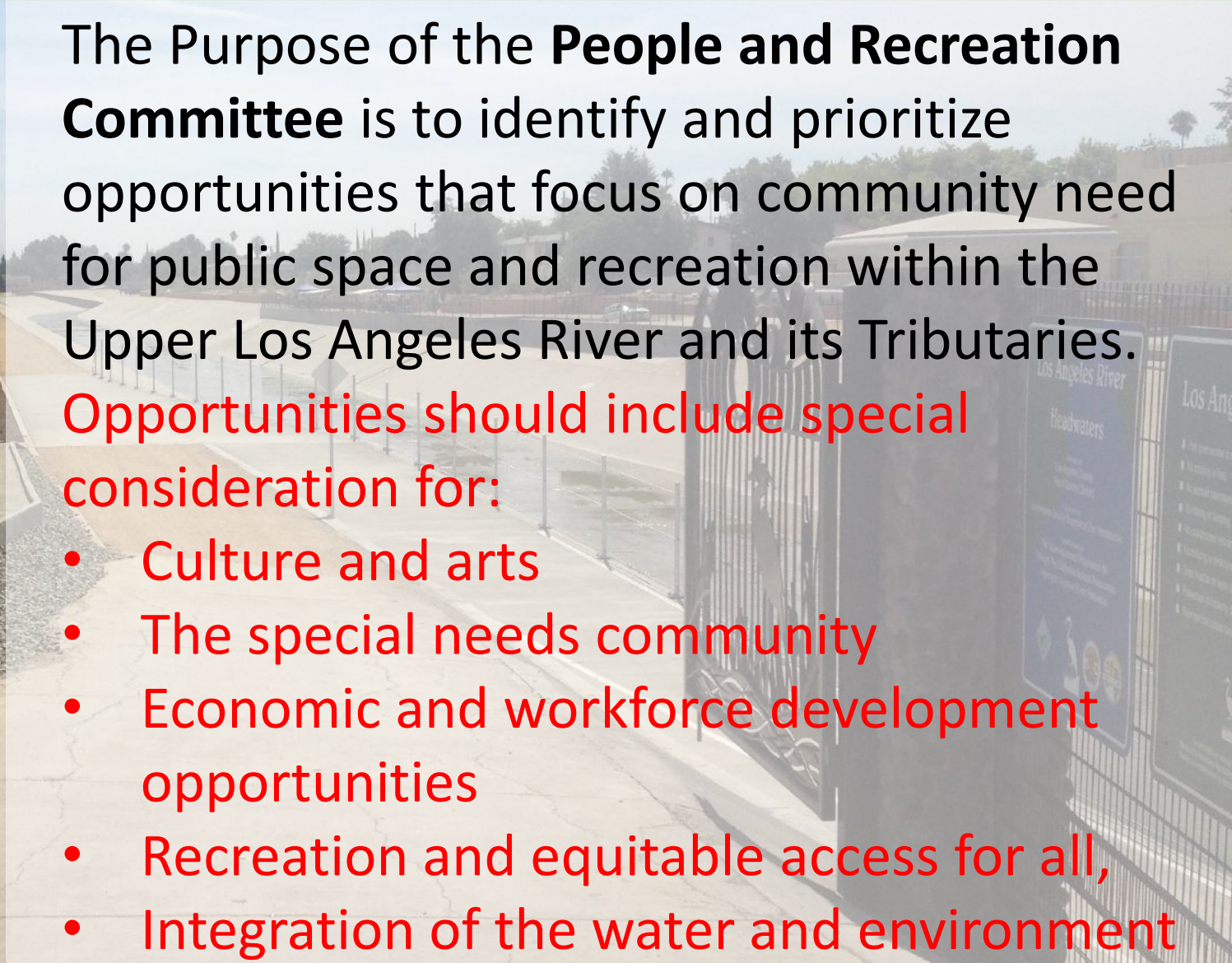
# People and Recreation Committee Purpose



The Purpose of the **People and Recreation Committee** is to identify and prioritize opportunities that focus on community need for public space and recreation within the Upper Los Angeles River and its Tributaries.

Opportunities should include special consideration for:

- Culture and arts
- The special needs community
- Economic and workforce development opportunities
- Recreation and equitable access for all,
- Integration of the water and environment





# AB 466 Upper Los Angeles River and Tributaries Working Group People and Recreation Committee

## Committee Goals and Objectives

- Create improved, inclusive access and connectivity to the river and tributaries for all users
- Provide <sup>safe</sup> connectivity to ~~safe~~ parks, open spaces, and trails
- Identify and create public spaces that are inclusive and inspiration<sup>al</sup>, while ~~promoting an emphasis on community and open space~~
- Feature and promote the importance of <sup>the</sup> community ~~values~~ and local culture
- ~~Coordinate with~~ <sup>Support Strengthen</sup> local businesses <sup>Preserve</sup> and vendors to foster job creation and economic growth
- Focus on social equity and environmental justice during the planning process
- Incorporate educational and recreational opportunities
- Identify opportunities for habitat restoration, passive recreation and examine their relationships with baseflows

• <sup>Ecosystem</sup>

Plan of: CA River



# People and Recreation Goals and Objectives



Create Improved, inclusive access ~~for all~~ to the River and the tributaries for all users

Provide connectivity to safe ~~connections to~~ parks, open space and trails

Identify and create public spaces that are inclusive and inspiration, while promoting an emphasis on community and open space

Feature and promote the importance of community values and local culture

Coordinate with local businesses and vendors to foster job creation and economic growth

Focus on social equity and environmental justice during the planning process

Incorporate educational and recreational opportunities

Identify opportunities for habitat restoration, passive recreation, and examine their relationship with baseflows



## AB 466 Upper Los Angeles River and Tributaries Working Group People and Recreation Committee

### Committee Goals and Objectives

- Create improved, inclusive access and connectivity to the river and tributaries for all users
- Provide <sup>safe</sup> connectivity to ~~safe~~ parks, open spaces, and trails
- Identify and create public spaces that are inclusive and inspirational, <sup>all</sup> while ~~promoting an emphasis on community and open space~~
- Feature and promote the importance of community <sup>the</sup> ~~values~~ and local culture
- ~~Coordinate with~~ <sup>Support Strengthen</sup> local businesses <sup>Preserve</sup> and vendors to foster job creation and economic growth
- Focus on social equity and environmental justice during the planning process
- Incorporate educational and recreational opportunities
- Identify opportunities for habitat restoration, passive recreation and examine their relationships with baseflows

\* Ecosystem

Plan of: RA, ...



# PROVIDE CONNECTIVITY

## MEANING

- SIDEWALKS
- SAFE TO USE
- SIGNAGE IN COMMUNITY
- PERPENDICULAR TO WATERWAYS
- NEIGHBORHOOD CONNECTIVE

## METRICS

- LIGHTING
- SIGNAGE
- DISTANCES
- PUBLIC TRANSIT ACCESS
- CONNECTIONS BETWEEN PARKS & OPEN SPACE

## METHODS

- PUBLIC TRANSIT



# COMMUNITY VALUES

## MEANING

- FOOD TRADITIONS
- TRIBAL REPRESENTATION

## METRICS

- GROUP GATHERINGS
- LOCAL FOOD ESTABLISHMENTS
- LEVEL OF COMMUNITY INVOLVEMENT

## METHODS

- INTERPRETATIONAL SIGNAGE
- ART



# EDUCATION + RECREATION

## MEANING

- PROGRAMMING
- PASSIVE RECREATION
- SPORTS
- WATER BASED RECREATION
- ACTIVE PLAY
- FEASIBLE LOCATIONS
- BIKING

## METRICS

- NUMBER OF RECREATION LOCATIONS
- VISITORS TO RECREATION LOCATION
- SIGNAGE FOR HISTORY & CULTURE

## METHODS



# HABITAT RESTORATION BASEFLOWS

MEANING

OPPORTUNITIES

HABITAT CORRIDORS

METRICS

METHODS



# ID + CREATE PUBLIC SPACE

## MEANING

- NO BARRIERS TO ACCESS
- RELATIVE TO COMMUNITY

## METRICS

- PROXIMITY TO DISADVANTAGE COMMUNITY

## METHODS

- CULTURAL SPACES
- HISTORICAL LOCATIONS



# LOCAL BUSINESS

## MEANING

- PRESERVATION
- STRENGTHEN
- COMPATIBLE WITH ENVIRONMENT
- AVOIDS DISPLACEMENT
- MAKES ECONOMIC SENSE (PHYSICAL LOCATION)

## METRICS

- SALES/ECONOMIC GROWTH

## METHODS

- BUSINESS RESOURCES
- SUPPORTING BUSINESSES
- STRENGTHEN



# SOCIAL EQUITY

## MEANING

## METRICS

· DISADVANTAGED COMMUNITY ACCESS

★. NO DISPLACEMENT

## METHODS

· MULTILINGUAL COMMUNICATIONS



# IMPROVED INCLUSIVE ACCESS

## MEANING

- SAFETY · <sup>NO</sup> BARRIERS TO ACCESS
- ADA ACCESSIBILITY
- ACCESSIBLE TO MANY COMMUNITIES
- ACCESS FOR WATERWAYS (RECREATION)

## METRICS

- MILES BETWEEN ACCESS
- ADJACENT PUBLICALLY ACCESSIBLE ACCESS · BENCHES
- LIGHTING · WAYFINDING · SHADE · EDUCATIONAL MARKERS
- EQUITABLE ACCESS · USERSHIP & DEMOGRAPHICS
- WHERE IS (AGE, USER LOCATION) ACCESS? WHAT IS FEASIBLE

## METHODS

- PUBLIC TRANSIT
- CULTURAL SPACES





## Item 7. Tributaries overview and characterization; review and discussion of gap areas





# Data Inventory

## Flood Risk

- Tributary Channel design and engineering
- Hydraulic river flows
- Right of way
- **Tributary drainage area**

## Active Transpiration

- Pedestrian pathways
- Bike trails
- non-motorized vehicle trails
- Public transportation locations
- Public transportation data
- River access and Points of interest

## Water Supply

- Groundwater Basins
- Soil permeability
- **Impervious land cover**
- Sewersheds
- Stormwater outfalls
- Drainage networks

## Ecosystem and Habitat

- Historic ecology
- Contemporary ecology
- Habitat connectivity
- **Significant ecological areas**
- public land
- Tree canopy

## Water Quality

- Stormwater runoff volumes
- Watersheds
- land use
- **Tributary length**
- Water quality monitoring data

## Open Space and Recreation

- Conservancy boundaries
- **Percent of people 1/2 mile from a park**
- **Park provisions**
- **Vacant Land**
- Park locations
- Recreational areas

## Disadvantaged Communities

- Census data
- Brownfields
- **CalEnviroScreen 3.0**
- Environmentally contaminated areas
- **Household income**
- Zoning

# Data Gap Highlights

---

- What makes **each of the subwatersheds unique** and how they relate and connect to one another
- Planning for **network connectivity** for both nature and nonmotorized transportation throughout all the watersheds.
- **Consistency for the scale of planning**
- **Cultural** resources
- **Amenities** along the river
- Community or grant **funded park spaces**



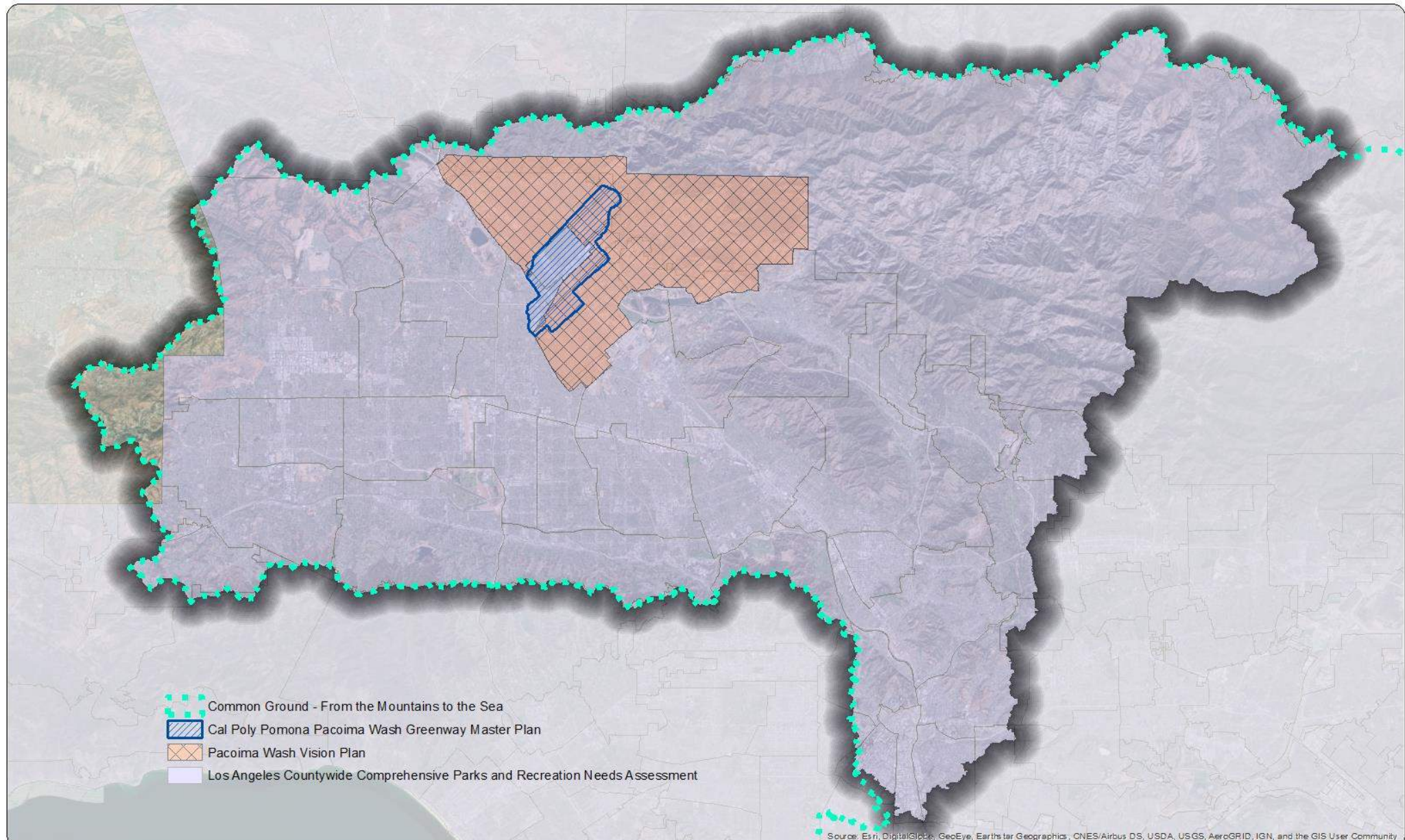
# Tributary Screening Matrix

		Tujunga Wash	Pacoima Wash	Burbank Western Channel	Verdugo Wash	Arroyo Seco	Aliso Canyon Wash	Browns Canyon Wash	Arroyo Calabasas	Caballero Creek	Bull Creek	Central Branch Tujunga	Bell Creek	Chatsworth Creek
PEOPLE & RECREATION	A. % People More than 1/2 Mile from Park* <small>Source: 2010 Census Data/LA County Park Assessment</small>	5 (20%)	6 (20%)	4 (15%)	1 (3.0%)	2 (9.0%)	8 (30%)	11 (46%)	7 (25%)	12 (50%)	10 (46%)	9 (35%)	13 (60%)	3 (13%)
	B. Park Provision* <small>acres of park space per 1,000 people Source: 2010 Census Data/LA County Park Assessment</small>	11 (1.65)	12 (1.45)	8 (3.76)	5 (5.24)	3 (9.36)	9 (1.91)	1 (13)	13 (1.44)	10 (1.87)	4 (5.63)	7 (3.01)	6 (3.53)	2 (11.5)
	C. Population Density* <small>people per acre Source: 2010 US Census</small>	13(38)	4(18)	10 (26)	11(29)	8 (23)	6 (19)	9 (25)	2 (17)	12 (36)	1 (15)	3 (17)	7(21)	5 (18)
	D. Vacant Land* <small>% of total Source: LA County GIS Portal</small>	9 (6.1%)	8 (5.9%)	4 (3.5%)	11 (9.1%)	10 (6.5%)	7 (5.7%)	6 (5.6%)	13 (16.9)	12 (14.2%)	3 (1.4%)	2 (1.3%)	5 (3.7%)	1(1%)
BOTH	E. Household Income* <small>Source: 2010 US Census</small>	11 (\$51K)	13 (\$46K)	10 (\$51K)	8 (\$55K)	12 (\$46K)	6 (\$58K)	5 (\$60K)	3 (\$80K)	7 (\$58K)	4 (\$74K)	9 (\$52K)	2 (\$81K)	1 (82K)
	F. Community Burden (CES 3.0)* <small>State percentile range Source: State of California, CES 3.0</small>	12 (70)	13 (76)	11 (69)	5 (51)	9 (62)	8 (60)	7 (59)	4 (48)	3 (47)	6 (58)	10 (66)	1 (41)	2 (42)
HYDROLOGY & ENVIRONMENT	G. Impervious Land Cover* <small>% total land cover Source: National Landcover Data Base, Model</small>	9 (49%)	11 (53%)	13 (57%)	5 (39%)	2 (34%)	8 (42%)	10 (52%)	3 (34%)	4 (38%)	6 (40%)	12 (57%)	7(41%)	1 (33%)
	H. Tributary Length <small>miles Source: USGS National Hydrography Dataset</small>	12 (9.8)	13 (11)	7(6.3)	8 (8.3)	11 (9.7)	9 (8.5)	5 (5.9)	7(6.3)	2 (3.3)	10 (9.3)	4 (4.2)	3 (3.7)	1(2.3)
	I. Tributary Drainage Area <small>acres Source: LA County GIS Portal</small>	13 (111K)	12 (38.7K)	9 (18.5K)	10 (19.4K)	11(30.2K)	7(13.6K)	8 (14K)	5 (9.2K)	1 (2.4K)	6 (12.8K)	2 (5.3K)	4 (8K)	3 (6.3K)
	J. Significant Ecological Area* <small>acres Source: LA County GIS Portal</small>	11(2,589)	5 (28)	13 (6,983)	10 (2,536)	2 (0)	4 (7)	12 (4,493)	6 (453)	7 (1,090)	8 (1,180)	2 (0)	3 (5)	9 (1,971)
TOTAL SCORE		106	97	89	74	70	72	74	63	70	58	60	51	28

\* within 0.5 miles of the tributary



# People and Recreation Plan Gaps

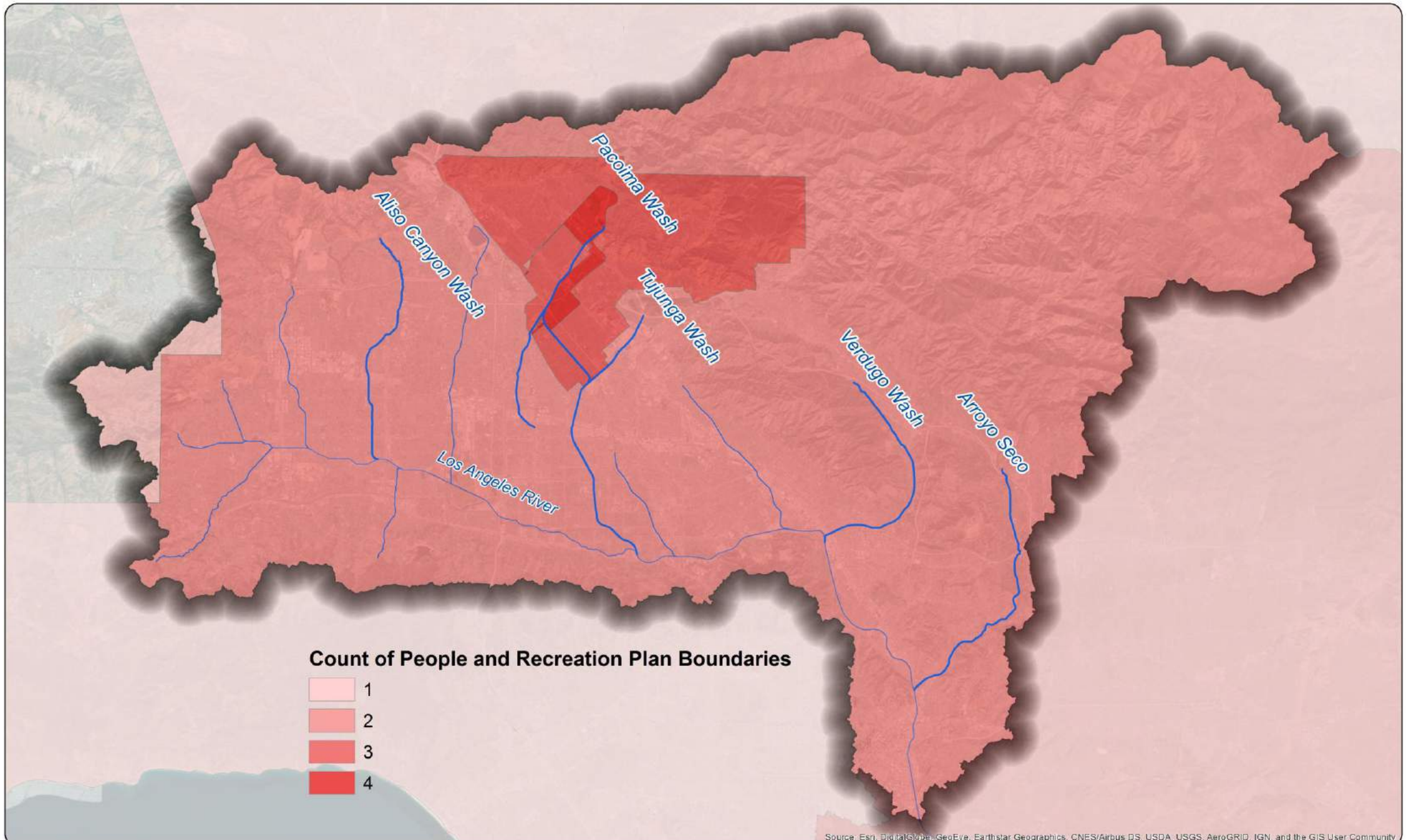


0 2.5 5  
Miles

PEOPLE AND RECREATION PLAN BOUNDARIES  
AB 466 UPPER LOS ANGELES RIVER AND TRIBUTARIES







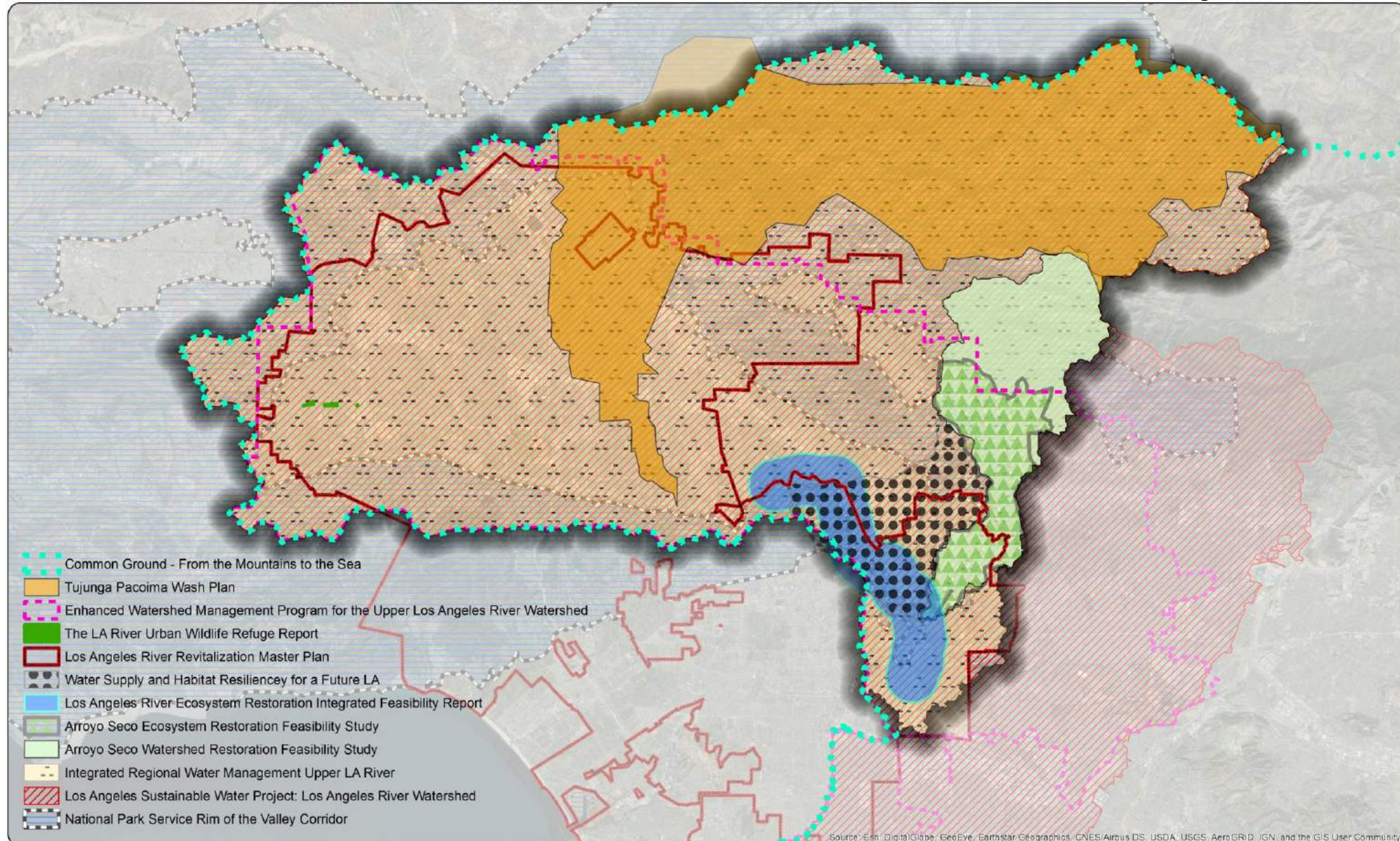
0 2 4 Miles

**PEOPLE AND RECREATION PLAN BOUNDARIES  
AB 466 UPPER LOS ANGELES RIVER AND TRIBUTARIES**





# Water and Environment Plan Gaps



Source: Esri, DigitalGlobe, GeoEye, Earthstar Geographics, CNES/Airbus DS, USDA, USGS, AeroGRID, IGN, and the GIS User Community

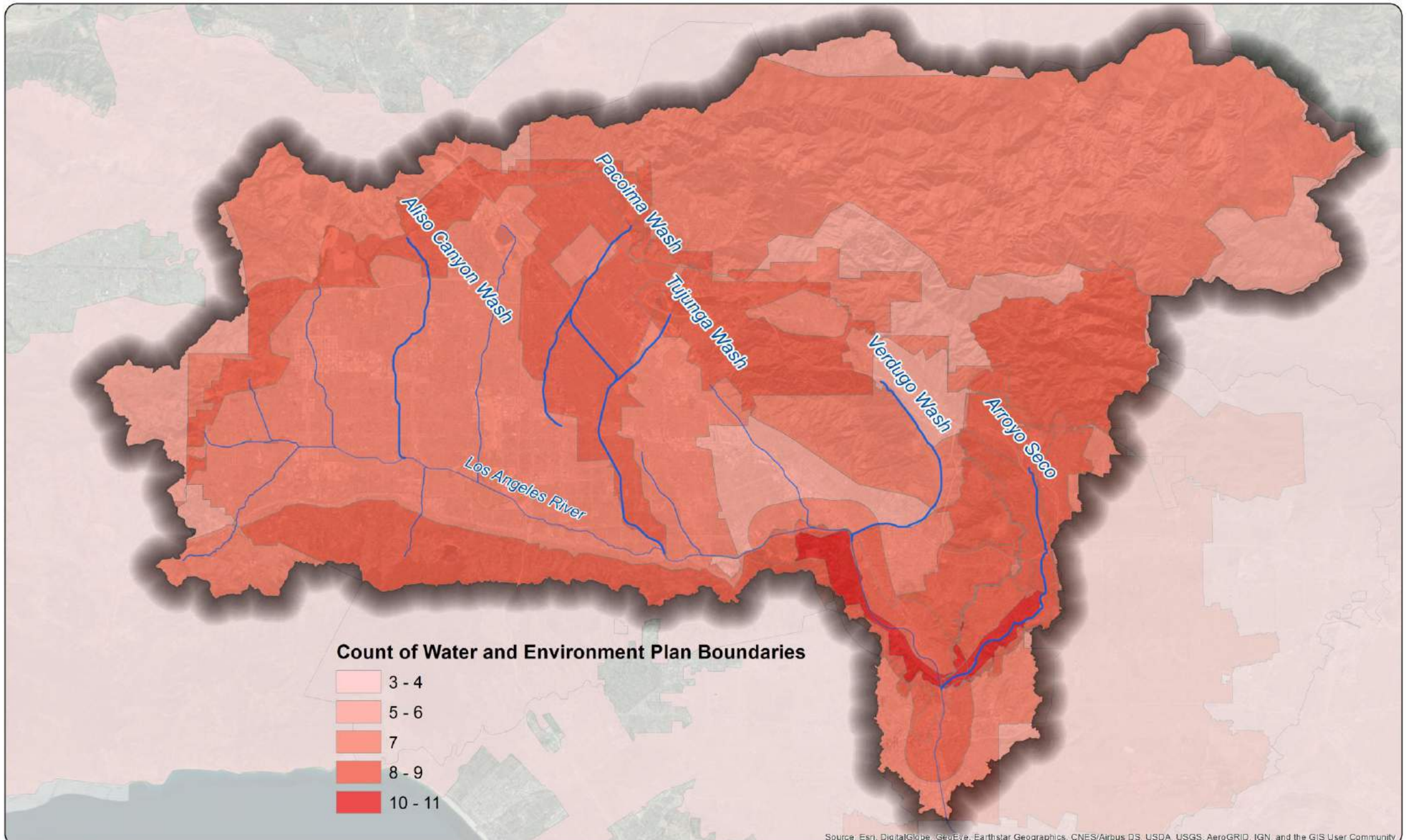


0 2.5 5  
Miles

**WATER AND ENVIRONMENT PLAN BOUNDARIES  
AB 466 UPPER LOS ANGELES RIVER AND TRIBUTARIES**

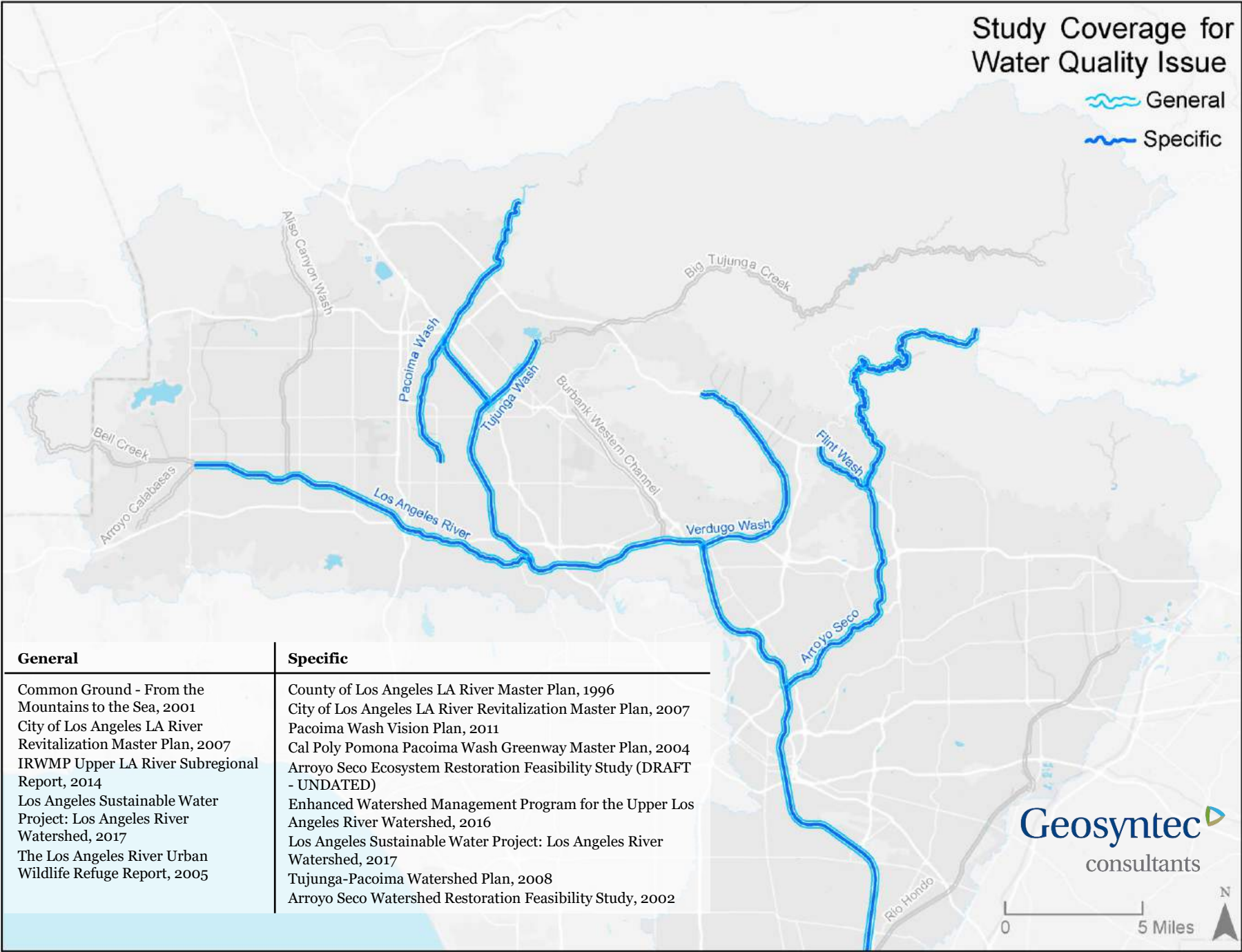






Study Coverage for  
Water Quality Issue

- General
- Specific



**General**

Common Ground - From the Mountains to the Sea, 2001  
City of Los Angeles LA River Revitalization Master Plan, 2007  
IRWMP Upper LA River Subregional Report, 2014  
Los Angeles Sustainable Water Project: Los Angeles River Watershed, 2017  
The Los Angeles River Urban Wildlife Refuge Report, 2005

**Specific**

County of Los Angeles LA River Master Plan, 1996  
City of Los Angeles LA River Revitalization Master Plan, 2007  
Pacoima Wash Vision Plan, 2011  
Cal Poly Pomona Pacoima Wash Greenway Master Plan, 2004  
Arroyo Seco Ecosystem Restoration Feasibility Study (DRAFT - UNDATED)  
Enhanced Watershed Management Program for the Upper Los Angeles River Watershed, 2016  
Los Angeles Sustainable Water Project: Los Angeles River Watershed, 2017  
Tujunga-Pacoima Watershed Plan, 2008  
Arroyo Seco Watershed Restoration Feasibility Study, 2002

Geosyntec  
consultants





Study Coverage for  
Active Transportation Issue

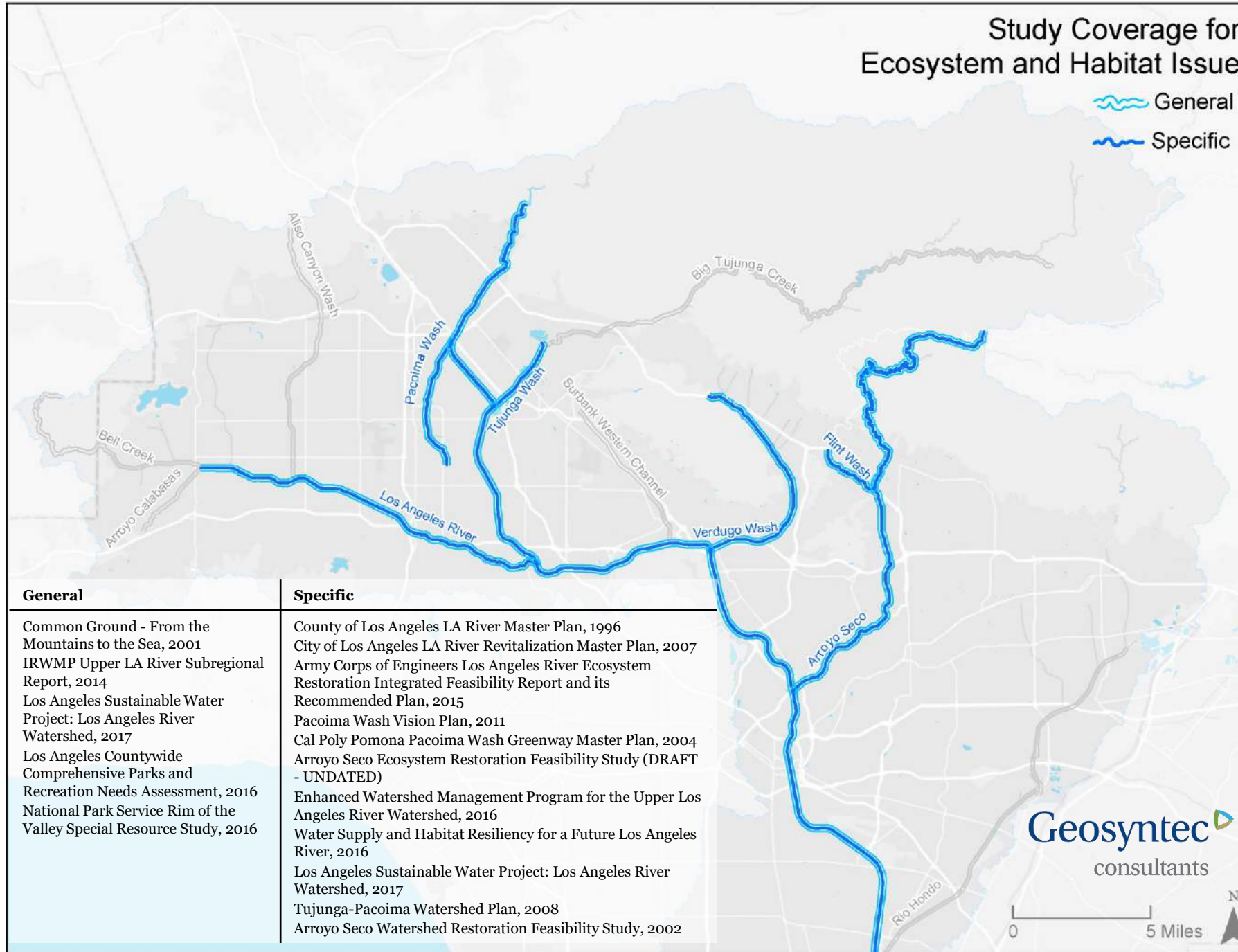
- General
- Specific



Geosyntec  
consultants

# Study Coverage for Ecosystem and Habitat Issue

General  
Specific



## General

Common Ground - From the Mountains to the Sea, 2001  
IRWMP Upper LA River Subregional Report, 2014  
Los Angeles Sustainable Water Project: Los Angeles River Watershed, 2017  
Los Angeles Countywide Comprehensive Parks and Recreation Needs Assessment, 2016  
National Park Service Rim of the Valley Special Resource Study, 2016

## Specific

County of Los Angeles LA River Master Plan, 1996  
City of Los Angeles LA River Revitalization Master Plan, 2007  
Army Corps of Engineers Los Angeles River Ecosystem Restoration Integrated Feasibility Report and its Recommended Plan, 2015  
Pacoima Wash Vision Plan, 2011  
Cal Poly Pomona Pacoima Wash Greenway Master Plan, 2004  
Arroyo Seco Ecosystem Restoration Feasibility Study (DRAFT - UNDATED)  
Enhanced Watershed Management Program for the Upper Los Angeles River Watershed, 2016  
Water Supply and Habitat Resiliency for a Future Los Angeles River, 2016  
Los Angeles Sustainable Water Project: Los Angeles River Watershed, 2017  
Tujunga-Pacoima Watershed Plan, 2008  
Arroyo Seco Watershed Restoration Feasibility Study, 2002

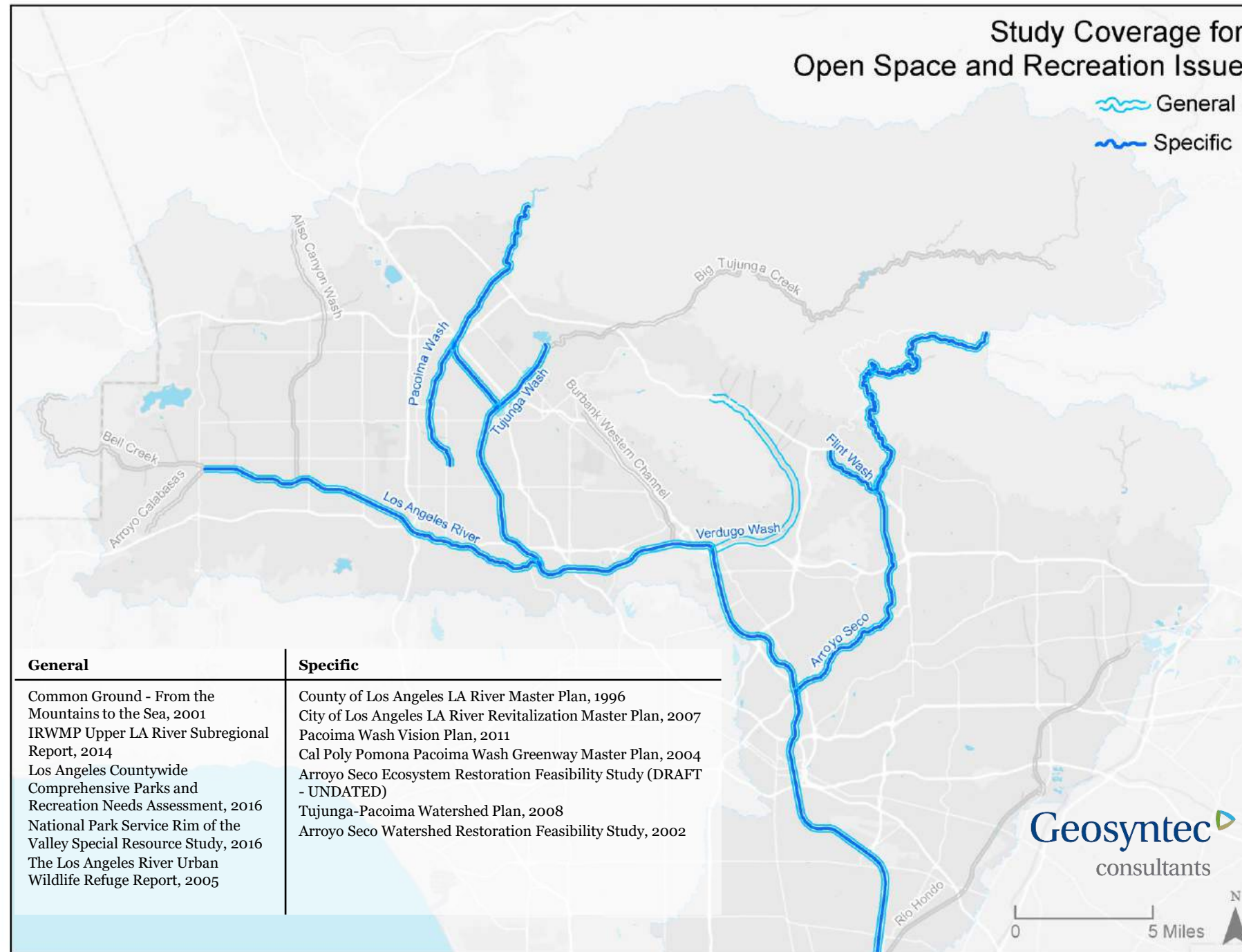
Geosyntec  
consultants





# Study Coverage for Open Space and Recreation Issue

General  
Specific



## General

Common Ground - From the Mountains to the Sea, 2001  
IRWMP Upper LA River Subregional Report, 2014  
Los Angeles Countywide Comprehensive Parks and Recreation Needs Assessment, 2016  
National Park Service Rim of the Valley Special Resource Study, 2016  
The Los Angeles River Urban Wildlife Refuge Report, 2005

## Specific

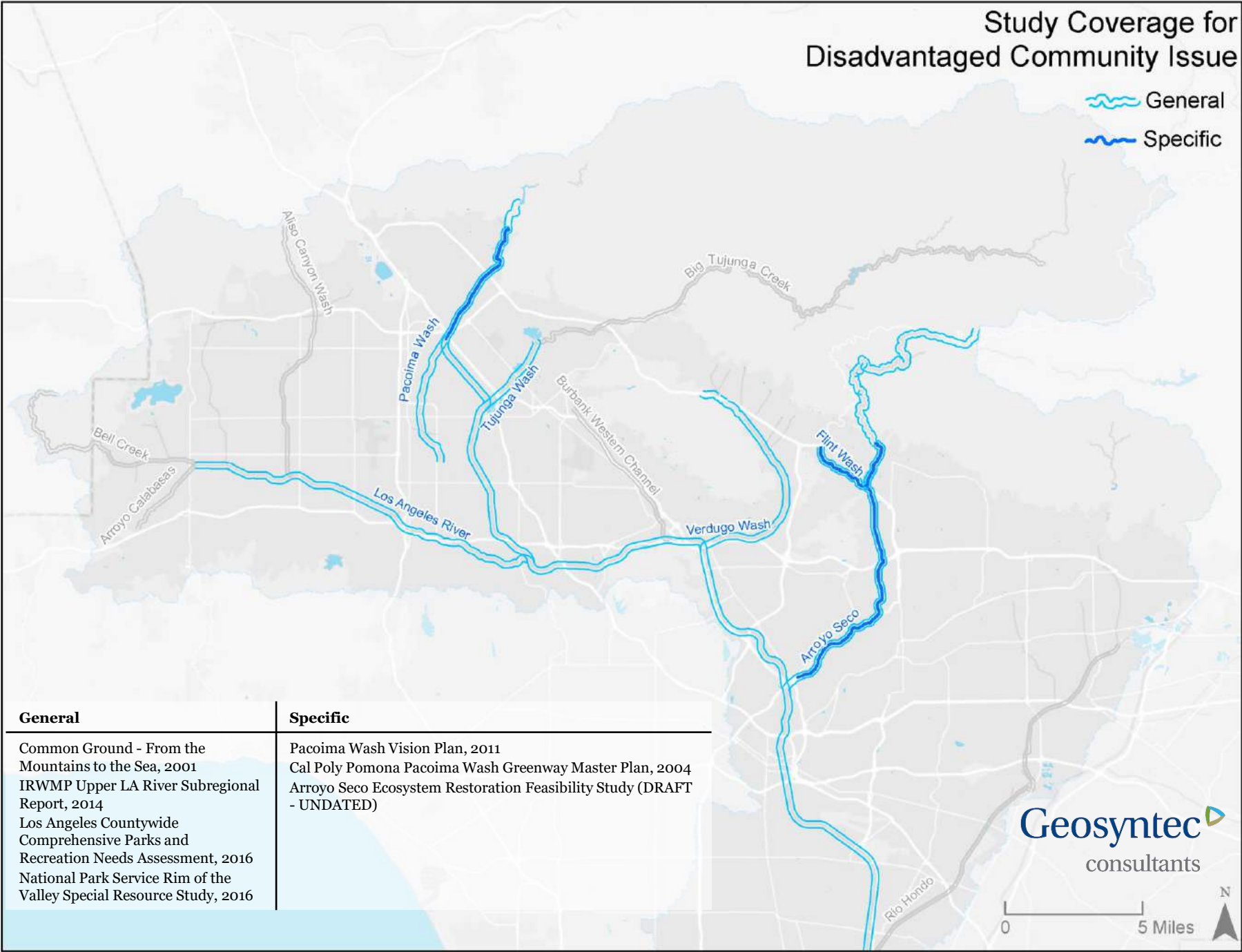
County of Los Angeles LA River Master Plan, 1996  
City of Los Angeles LA River Revitalization Master Plan, 2007  
Pacoima Wash Vision Plan, 2011  
Cal Poly Pomona Pacoima Wash Greenway Master Plan, 2004  
Arroyo Seco Ecosystem Restoration Feasibility Study (DRAFT - UNDATED)  
Tujunga-Pacoima Watershed Plan, 2008  
Arroyo Seco Watershed Restoration Feasibility Study, 2002

Geosyntec  
consultants



Study Coverage for  
Disadvantaged Community Issue

 General  
 Specific



**General**

Common Ground - From the Mountains to the Sea, 2001  
IRWMP Upper LA River Subregional Report, 2014  
Los Angeles Countywide Comprehensive Parks and Recreation Needs Assessment, 2016  
National Park Service Rim of the Valley Special Resource Study, 2016

**Specific**

Pacoima Wash Vision Plan, 2011  
Cal Poly Pomona Pacoima Wash Greenway Master Plan, 2004  
Arroyo Seco Ecosystem Restoration Feasibility Study (DRAFT - UNDATED)

**Geosyntec**  
consultants





# Plan Development Timeline

2018

2019

**Inventory  
and Analysis**

**Initial  
Opportunity  
Sites**

**Constraints  
Analysis**

**Draft  
Framework**

**Concept  
Development**

**Revitalization  
Plan**

**Community Engagement Plan**

**Community Outreach**



# TRIBUTARY CHARACTER

ANGELES NATIONAL FOREST

ALISO CANYON

BROWNS CANYON

BURBANK CHANNEL

CHATSWORTH CREEK

BELL CREEK

CABALLERO CREEK

SANTA MONICA MOUNTAINS NATIONAL RECREATION AREA

ARROYO CALABASAS

BULL CREEK

CENTRAL BRANCH TUJUNGA

LOS ANGELES RIVER

VERDUGO MOUNTAINS

LA CANADA FLINTRIDGE

ALTADENA

PASADENA

DOWNTOWN LOS ANGELES

CULVER CITY

SANTA MONICA

HOLLYWOOD

HILLS

SHERMAN OAKS

BURBANK

VAN NUYS

PANORAMA CITY

SAN FERNANDO

RESEDA

WINNETKA

CHATSWORTH

WEST HILLS

PACIFIC OCEAN

0 2 4 miles



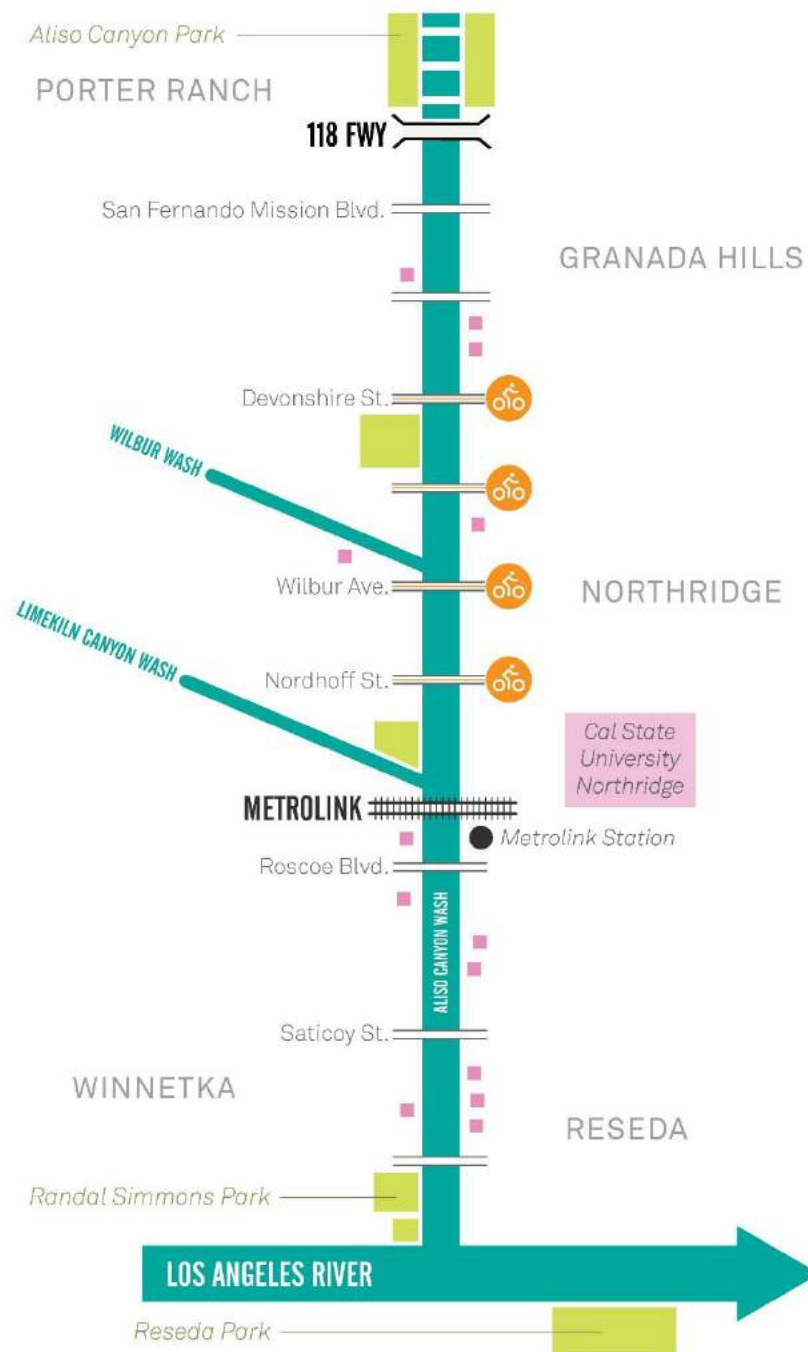
# Tributary Resident Questions

- Tell us a story of what it is like living here
- What is your life like?
- Is it noisy? Crowded? Trash/litter?
- What is transportation/traffic like? Do you see bicyclists? A lot of Pedestrians? People taking the bus?
- Is there shade? Do you see landscaping?
- What should we know about your tributary/community?



# ALISO CANYON





## ALISO CANYON

Aliso Canyon Wash begins as an engineered channel exiting the Aliso Debris Basin just south of the Ronald Regan Freeway (SR 118) in Granada Hills, and flows through Northridge to its confluence with the Los Angeles River in Reseda. **The wash is concrete-lined with vertical walls throughout its 6.4-mile length.**

**Equestrian Community** along portions of tributary length that use portions of the unpaved path. Power corridor along sections. **Phase 1 of Aliso Creek Confluence Park opened in 2016.**

### POPULATION WITHIN 0.5 MILES

- Density: 19 people/acre (LA County: 13)
- Household Income: \$58K (LA County \$54K)
- Community Burden: Bottom 40% of State

### PARK SPACE

- 1.91 acres per 1,000 people
- Mixture of local parks, and regional open spaces

### SOME PREVIOUS PLANNING EFFORTS

- The Los Angeles River Revitalization Master Plan includes the development of the confluence of Aliso Canyon Creek and the Los Angeles River (Aliso Creek Confluence Park) as a proposed project.
- This area will provide opportunities for habitat restoration, greenways and bike trails as well as water quality treatment via restored wetlands.

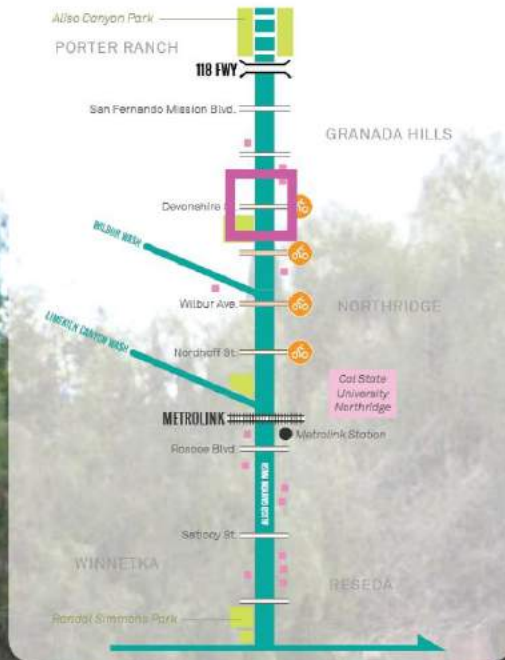
### KEY ADJACENCIES INCLUDE

- Porter Ranch
- Cal State Northridge
- Northridge Recreation Center
- Northridge MetroLink Station
- Cleveland High School
- Blythe Street Elementary
- Randal D. Simmons Park
- Commercial zones on Zelah Ave and Nordhoff Way, Sherman Way

### 18 SCHOOLS WITHIN 0.5 MILES



## KEY MAP



OAKRIDGE  
ESTATE

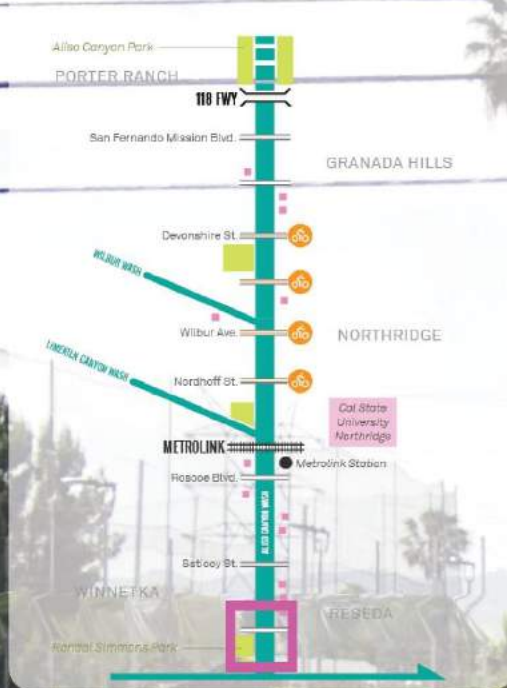
RESIDENTIAL

10-15'      ~20-25'

ALISO CANYON + DEVONSHIRE (facing south)



## KEY MAP



**RANDAL D  
SIMMONS  
PARK**

**NURSERY +  
UTILITY  
EASEMENT**

~10-15'

~10-15'

**ALISO CANYON + VANOWEN ST (facing south)**



## KEY MAP



RESIDENTIAL

ALISO CREEK CONFLUENCE PARK



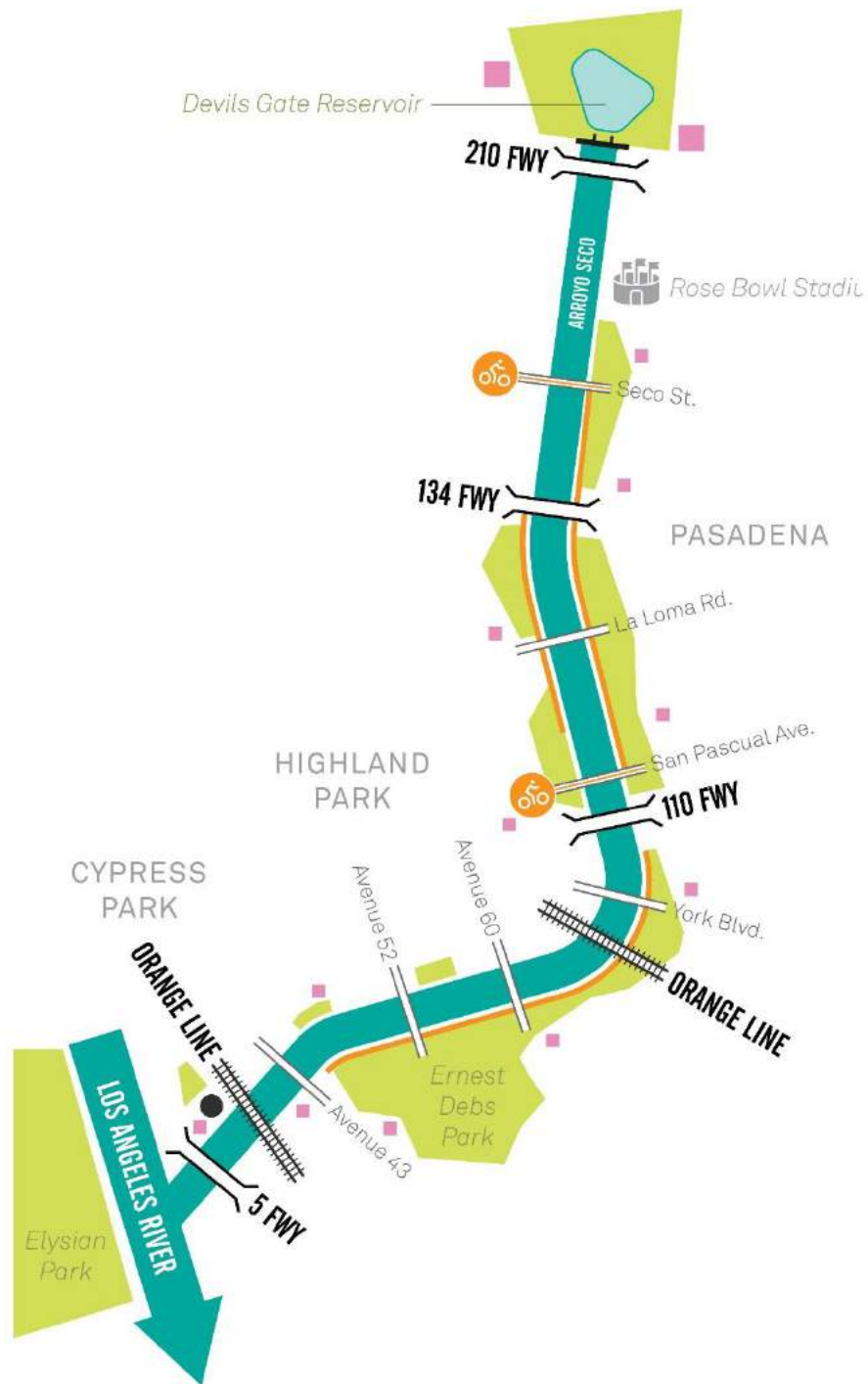
ALISO CANYON (LA River & Aliso Creek Confluence Park)





# ARROYO SECO





## ARROYO SECO

The Arroyo Seco flows from its headwaters in the San Gabriel Mountains through the cities of La Canada Flintridge, Pasadena, and South Pasadena, to its confluence with the Los Angeles River near downtown Los Angeles. The upper half of the Arroyo Seco flows within the Angeles National Forest. Devils Gate Dam is located where the Arroyo Seco exits the forest.

The Arroyo Seco flows in a natural state above Devils Gate Dam and **is concrete lined the entire length below the dam**. The concrete walls of the engineered section have a trapezoidal configuration just upstream of the confluence with the Los Angeles River for about 3 miles then transitions to a vertical configuration where the 110 Freeway intersects Pasadena Avenue. It continues in this form until the Rose Bowl where it transitions back to a trapezoidal channel. **For most of its length, the creek flows through and adjacent to parks.**

The **Arroyo Seco bike path** runs adjacent to the creek for about 2-miles starting at East Avenue 43. A major portion of this path descends into the creek bed and runs adjacent to the low-flow channel—allowing direct access to the creek. An **unpaved multi-use trail** runs adjacent to the creek for about two miles through Lower Arroyo Park. However, as it flows through the Brookside Golf Course no fencing is present and direct access to the creek is possible. A **new path section in South Pasadena** opened from York to Arroyo Seco Parkway.

### POPULATION

- **Density: 23 people/acre (LA County: 13)**
- Household Income: \$46K (LA County \$54K)
- Community Burden: Bottom 38% of State

### PARK SPACE

- 9.36 acres per 1,000 people
- Most of Arroyo Seco flows through and adjacent to park

### KEY ADJACENCIES INCLUDE

- Brookside Golf & Country Club
- Arroyo Park
- Arroyo Seco Golf Course
- Debs Regional Park
- Heritage Square Museum
- Sycamore Grove Park

### SOME PREVIOUS PLANNING EFFORTS

- One Arroyo Plan (2018)
- Arroyo Seco Watershed Assessment (2010)
- The Arroyo Seco Watershed Management and Restoration Plan (2006)
- The Los Angeles River Revitalization Master Plan identifies the Arroyo Seco's confluence with the Los Angeles River as an "opportunity area"

**31 SCHOOLS WITHIN 0.5 MILES**



## KEY MAP



RESIDENTIAL

ARROYO  
SECO TRAIL

PARKING  
FOR  
BROOKSIDE  
PARK

ARROYO SECO + SECO STREET (facing south)



**KEY MAP**

Devils Gate Reservoir

210 FWY

ARROYO SECO

Rose Bowl St.

Seco St.

PASADENA

134 FWY

Loma Rd.

San Gabriel Ave.

HIGHLAND PARK

110 FWY

Yorba Blvd.

CYPRESS PARK

Orange Line

LOS ANGELES RIVER

Ernest Doherty Park

Avalon St.

Elysian Park

## LOWER ARROYO PARK



**ARROYO  
SECO TRAIL**



**ARROYO  
SECO TRAIL**

**ARROYO SECO + LA LOMA** (facing south)



## KEY MAP



**MEDIAN  
PLANTING**

**ARROYO  
SECO**

**I-5**

**I-110**

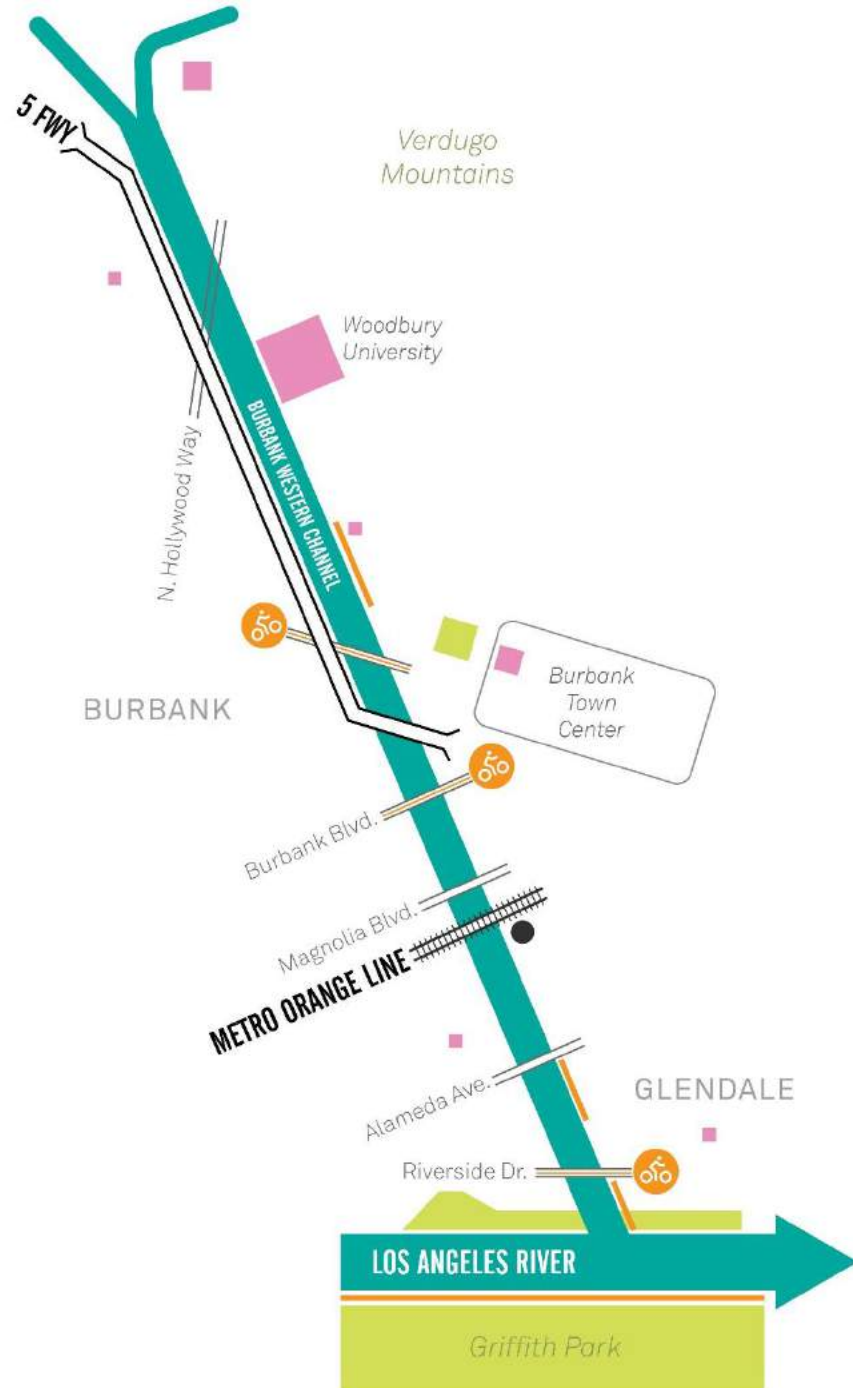
**ARROYO SECO + AVENUE 26** (facing south)





# BURBANK WESTERN CHANNEL





## BURBANK WESTERN CHANNEL

The Burbank Western Channel is an **engineered channel** with its upstream end in the Sun Valley area of the City of Los Angeles, and the majority of its 6-mile length flowing through the City of Burbank. It eventually meets the Los Angeles River in the City of Los Angeles, just south of the borders of the cities of Burbank and Glendale.

The Burbank Western Channel **runs adjacent to the Santa Ana (5) Freeway for a significant portion** of its length. The entire channel is **concrete-lined with vertical walls**. Burbank Western Channel runs through the south-eastern corner of the Los Angeles Equestrian Center at its confluence with the Los Angeles River and an **equestrian trail** runs adjacent to the channel for about a quarter of a mile in this segment. There are also **segmented bike paths** along the channel, which is fenced on both sides, providing only visual access to it. There is a small pocket park -- Compass Park at Lake Street in Burbank which abuts the channel.

### POPULATION WITHIN 0.5 MILES

- **Density: 26 people/acre (LA County: 13)**
- Household Income: \$51K (LA County \$54K)
- Community Burden: Bottom 31% of State

### PARK SPACE

- 3.76 acres per 1,000 people
- Mixture of local parks, regional open spaces, and natural areas

### KEY ADJACENCIES INCLUDE

- Metro Link Station
- Metro Orange Line BRT station
- De Garmo Park
- Woodbury University
- Burbank Town Center
- George Washington Elementary School
- Commercial areas on Victory, San Fernando

### 17 SCHOOLS WITHIN 0.5 MILES

### SOME PREVIOUS PLANNING EFFORTS

In October 2009, Burbank reached an agreement on the 12-mile San Fernando Valley Bike way, a new bicycle path along San Fernando Boulevard from Sylmar to Burbank. This would include a portion next to the channel that connects to the Downtown Burbank MetroLink Station.

The Los Angeles River Revitalization Master Plan proposes a non-motorized bridge linking this path to a proposed Los Angeles River path in this segment



## KEY MAP



RESIDENTIAL

RESIDENTIAL

~10-20'

~10-20'



BURBANK WESTERN + NETTLETON STREET (facing south)



## KEY MAP



**BUFFER TO  
GLENOAKS  
BLVD**

~20-30'

**BUFFER  
TO I-5**

~10-20'

**I-5**

**BURBANK WESTERN + LANARK STREET (facing south)**



## KEY MAP



I-5

BUFFER  
TO I-5

BIKE PATH

BURBANK WESTERN + BUENA VISTA STREET (facing south)



## KEY MAP



**SAN FERNANDO  
BLVD**

**BURBANK WESTERN + SAN FERNANDO BLVD (facing south)**

**VERN'S**

**BUFFER  
TO I-5**

**DO NOT  
ENTER**  
**WRONG  
WAY**



## KEY MAP



**METROLINK RAIL**

**BURBANK  
WESTERN  
CHANNEL**

**INDUSTRIAL**

**BURBANK WESTERN + BURBANK BLVD** (facing south)



## KEY MAP



**COMPASS  
TREE PARK**

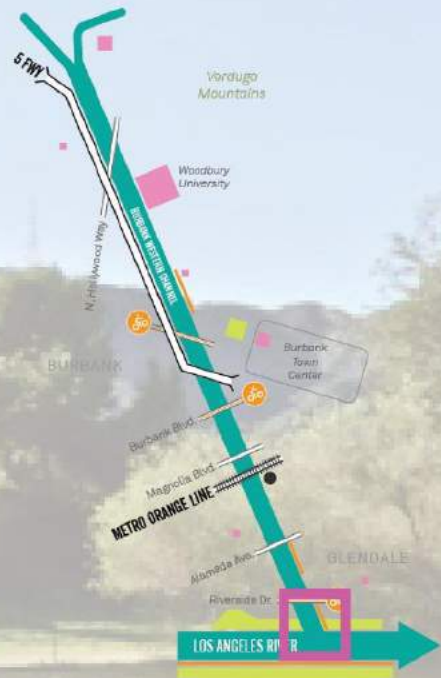
**RESIDENTIAL**

~10-25'

**BURBANK WESTERN + PROVIDENCE AVE (facing south)**



## KEY MAP



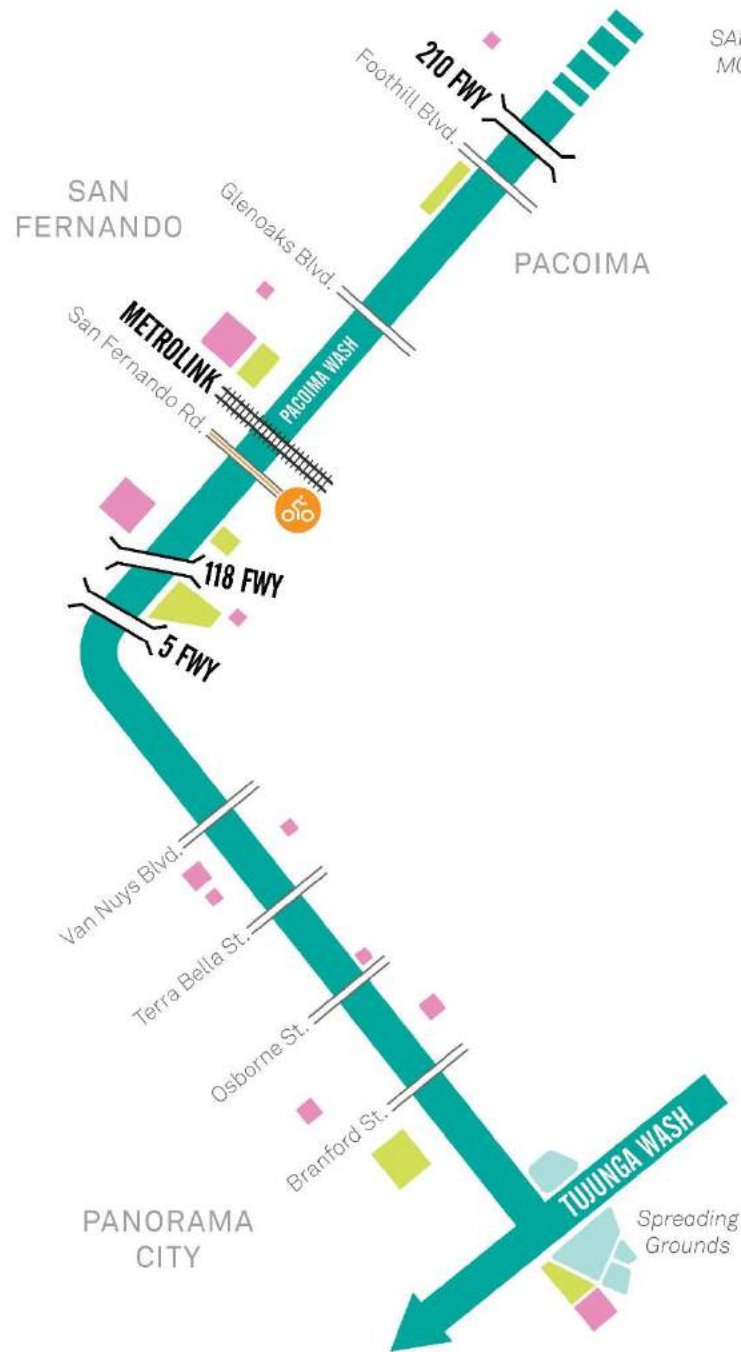
BURBANK WESTERN (LOS ANGELES EQUESTRIAN CENTER)





# PACOIMA WASH





## PACOIMA WASH

Pacoima Wash is an **engineered channel** that begins immediately downstream of Lopez Dam, and flows through San Fernando, Pacoima, and Panorama City, before going underground and flowing through a covered channel to join Tujunga Wash in Van Nuys. The wash flows as a relatively shallow, gently sloping, trapezoidal channel throughout its length.

The **Pacoima - San Fernando - Sylmar path** is currently being planned. At present, there are no bike paths or multi-use trails along Pacoima Wash. The channel is fenced throughout its length. Pacoima Wash flows adjacent to Sepulveda Recreational Center in Panorama City and Paxton Park in Pacoima where it is visually accessible.

### POPULATION WITHIN 0.5 MILES

- Density: 18 people/acre (LA County: 13)
- Household Income: \$46K (LA County \$54K)
- **Community Burden: Bottom 26% of State**

### KEY ADJACENCIES INCLUDE

- Sepulveda Recreational Center
- Paxton Wash Natural Park
- Devonshire Arleta Park
- Commercial zone on Arroyo Street

### 40 SCHOOLS WITHIN 0.5 MILES

### PARK SPACE

- 1.45 acres per 1,000 people
- Mainly local parks and natural areas

### SOME PREVIOUS PLANNING EFFORTS

- The Tujunga Pacoima Watershed Plan includes proposed continuous separate bicycle and pedestrian paths along the wash, as well as adjacent parks and greenways to increase access.
- The Pacoima Wash Vision Plan developed by Pacoima Beautiful (a non-profit organization) echoes the goals of the management plan – proposing a series of parks, bike paths, and multi-use trails along the Wash.



## KEY MAP



TRUCK  
CENTER

FOOTHILL  
BLVD

~10-15'

PACOIMA WASH + 210 FREEWAY (facing south)



## KEY MAP



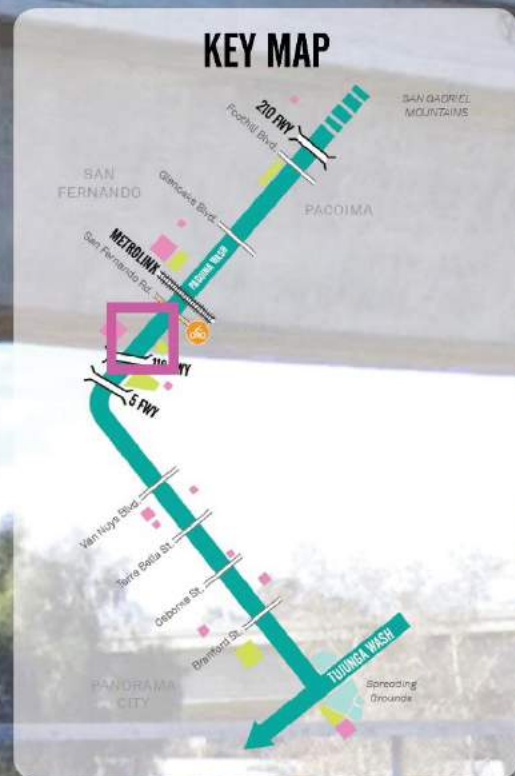
## PACOIMA WASH NATURAL PARK

~30-50'

~5-10'

PACOIMA WASH + FOOTHILL BLVD (facing south)





CA-118

I-5

~30-40'

PACOIMA WASH + LAUREL CANYON (facing south)





**RESIDENTIAL**

~20-30'

**PACOIMA WASH + TERRA BELLA STREET (facing south)**





# VERDUGO WASH





## VERDUGO WASH

Most of Verdugo Wash's course is within the City of Glendale - from the uppermost engineered section just upstream of Dunsmore Avenue and Honolulu Avenue in Crescenta Valley to its confluence with the Los Angeles River. The entire wash is **concrete-lined with vertical walls**.

There are **no bike paths or multi-use trails** along Verdugo Wash. **The channel is fenced throughout its length**. It flows along the edge of the Crescenta Valley County Park, and through the Oakmont Country Club and Glorietta Park, providing visual access to the wash.

### POPULATION WITHIN 0.5 MILES

- Density: 29 people/acre (LA County: 13)
- Household Income: \$55K (LA County \$54K)
- Community Burden: Bottom 49% of State

### KEY ADJACENCIES INCLUDE

- Verdugo Park
- Glendale Community College
- Fremont Park
- Glorietta Park
- Crescenta Valley Park
- Oakmont Country Club
- Glendale Civic Auditorium
- Commercial zones on Glen Oaks and Foothill Boulevard

### 13 SCHOOLS WITHIN 0.5 MILES

### PARK SPACE

- 5.24 acres per 1,000 people
- Mixture of small neighborhood parks, natural areas, and sport fields
- Key parks within 0.5 miles include: Griffith Park, Verdugo Mountains Open Space, Verdugo Park, Crescenta Valley Park

### SOME PREVIOUS PLANNING EFFORTS

- Confluence with the Los Angeles River has been recognized as an "Opportunity Area" for potential development of recreational opportunities in the City of Los Angeles' Los Angeles River Revitalization Master Plan (LARRMP)
- Restoration of this confluence area also features as part of the Los Angeles River Ecosystem Restoration Integrated Feasibility Report, Alternative 20.



## KEY MAP



RESIDENTIAL

RESIDENTIAL

VERDUGO WASH + MARKRIDGE ROAD (facing south)

PROPERTY OF LOS ANGELES COUNTY  
DEPARTMENT OF PUBLIC WORKS  
**TRESPASSING, LOITERING  
FORBIDDEN BY LAW**  
UP TO 6 MONTHS IN JAIL OR FINE  
OR BOTH FOR VIOLATION  
CALIFORNIA PENAL CODE SECTION 360 PC





## KEY MAP

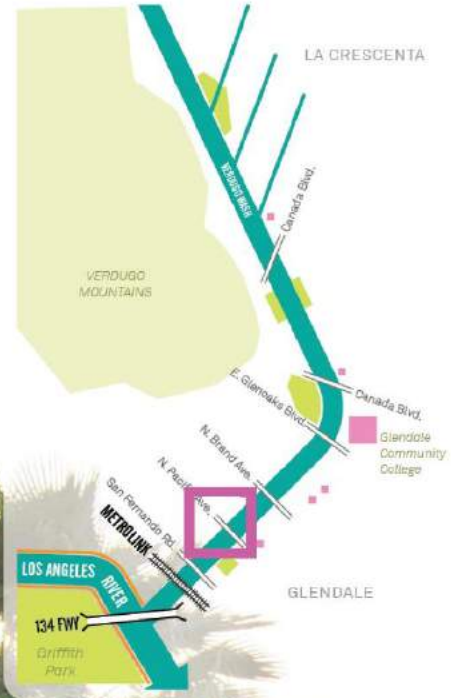


## CRESCENTA VALLEY PARK

VERDUGO WASH + HONOLULU AVE facing south)



## KEY MAP



RESTAURANTS

INSURANCE  
AGENT

VERDUGO WASH + PACIFIC AVE (facing south)





# TUJUNGA WASH





## TUJUNGA WASH

Tujunga Wash is a major tributary in the Los Angeles River. The engineered section flows as a concrete-lined channel with vertical walls from its upstream end, below Hansen Dam, to its confluence with the Los Angeles River in the Studio City area of the City of Los Angeles.

The **Tujunga Wash Greenway** which includes a multi-use trail and a man-made stream run along both sides of Tujunga Wash for one-mile from Vanowen Street to Oxnard Street in the Valley Glen area of the City of Los Angeles. This provides visual access to the wash in this segment. However, the nature of the fencing prevents direct access to the wash. Also, just upstream of its confluence with the Los Angeles River, Tujunga Wash flows adjacent to Moorpark Park in Studio City, providing visual access.

### POPULATION WITHIN 0.5 MILES

- **Density: 38 people/acre (LA County: 13)**
- Household Income: \$51K (LA County \$54K)
- Community Burden: Bottom 30% of State

### KEY ADJACENCIES INCLUDE

- Hansen Dam
- Hansen Spreading Grounds
- Fulton Avenue Park
- Tujunga Greenbelt
- Monarch Stadium
- Moorpark Park
- Commercial zones on Victory Blvd and Coldwater Canyon Ave

### 25 SCHOOLS WITHIN 0.5 MILES

### PARK SPACE

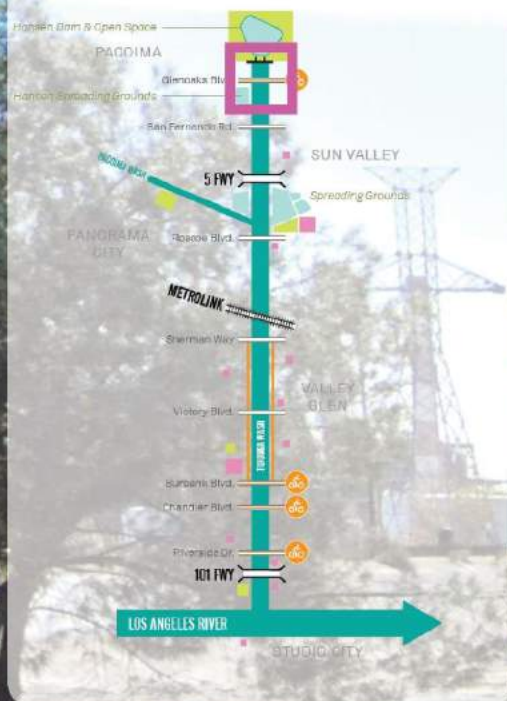
- 1.65 acres per 1,000 people
- Mainly local parks such as Valley Village and Woodbridge Park

### SOME PREVIOUS PLANNING EFFORTS

- The Tujunga Pacoima Watershed Plan was developed by The River Project, an environmental organization, in 2008
- Proposed projects within the plan include construction of continuous and separate bicycle and pedestrian paths along the wash, as well as adjacent parks and greenways to increase access
- The Los Angeles River Revitalization Master Plan identifies the confluence of Tujunga Wash and the Los Angeles River as an opportunity area for development of a river greenway and for constructed wetlands for regional water quality treatment.



## KEY MAP



UTILITY  
EASEMENT

INDUSTRY

HANSEN  
SPREADING  
GROUNDS

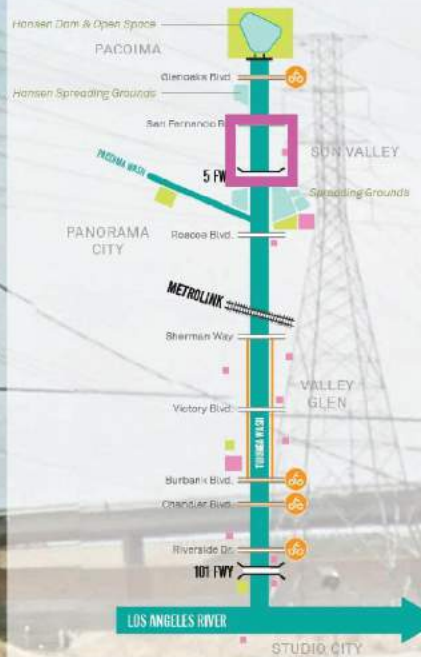
~40-50'

~50-75'

TUJUNGA WASH + GLENOAKS BLVD (facing south)



## KEY MAP



UTILITY  
EASEMENT

I-5

RESIDENTIAL

~50-75'

TUJUNGA WASH + LAUREL CANYON (facing south)



## KEY MAP



**GRACE  
COMMUNITY  
CHURCH**

**RESIDENTIAL**

~10-15'

~40-50'

**TUJUNGA WASH + ROSCOE BLVD (facing south)**



## KEY MAP



COMMERCIAL

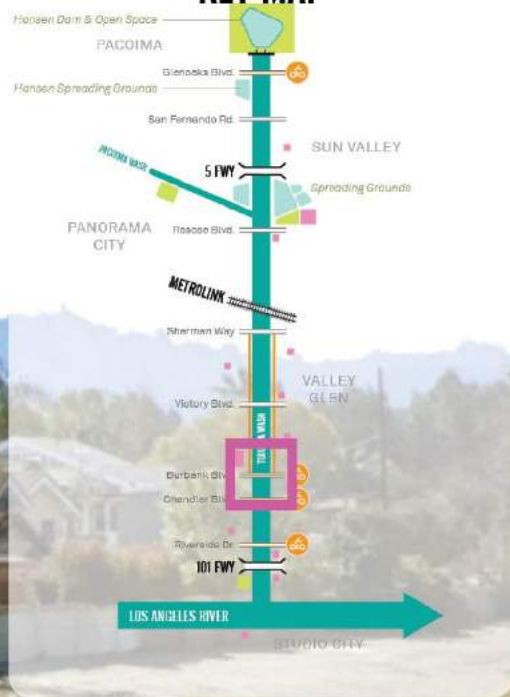
~50-75'

~50-75'

TUJUNGA WASH + SHERMAN WAY (facing south)



## KEY MAP



BURBANK BLVD.  
12800 W.

TUJUNGA  
GREENBELT

~50-75'

TUJUNGA WASH + BURBANK BLVD (facing south)



# Tributary Resident Questions

- Tell us a story of what it is like living here
- What is your life like?
- Is it noisy? Crowded? Trash/litter?
- What is transportation/traffic like? Do you see bicyclists? A lot of Pedestrians? People taking the bus?
- Is there shade? Do you see landscaping?
- What should we know about your tributary/community?





## Item 8. Case Studies and Best Practices





# 01 GUADALUPE RIVER PARK (1995-2005)

San Jose, California  
Length: 2 miles

*Integrating flood control site, wildlife, and recreation*

## WHY IS IT SIMILAR?

- Mix of commercial, dense residential, and freeways
- Existing trails that didn't connect
- Provide protection from 100-year flood events
- Opportunity for recreation and wildlife





# 01 GUADALUPE RIVER PARK (1995-2005)

San Jose, California  
Length: 3 miles

*Integrating flood control site, wildlife, and recreation*

## STRATEGIES

- Underground flood water bypass channel overlaid with open space
- Connected trail system
- Purchased homes next to the river to create spreading grounds
- Used recycled water to meet irrigation needs





# 02 CONWAY URBAN WATERSHED FRAMEWORK PLAN (2016)

*A plan for urban growth and biodiversity*

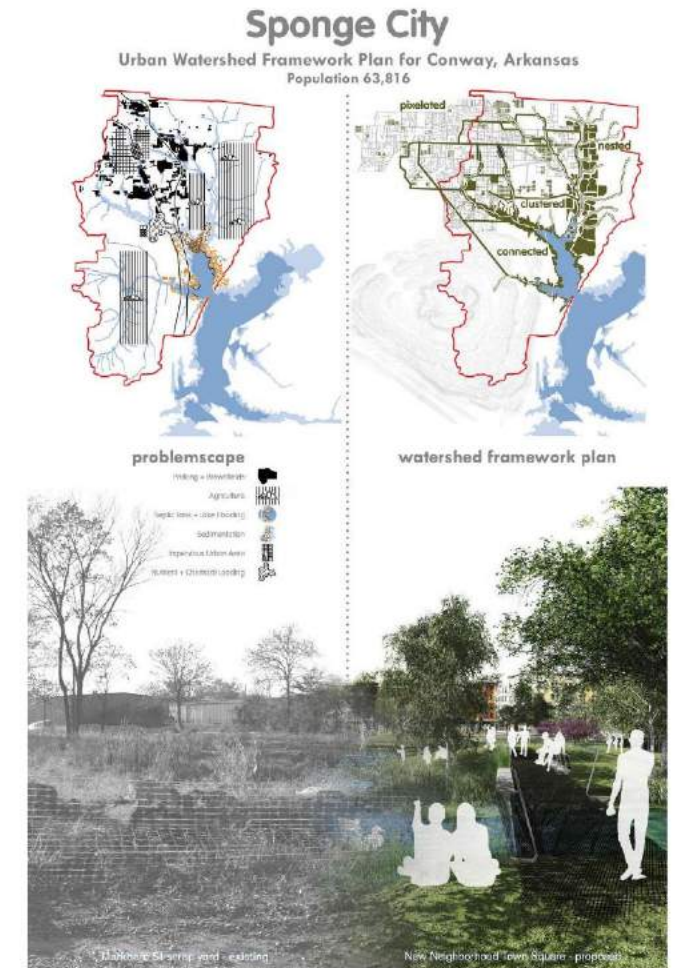
Little Creek-Palarm Creek Sub-watershed  
Conway, Arkansas  
Length: 10 miles

## WHY IS IT SIMILAR

- Growing city with development needs
- Unique ecological conditions
- Desire for flexible typologies that could be context specific

## STRATEGIES

- Portfolio of typologies that mix green and urban needs
  - Green streets
  - Water treatment art parks
  - Urban eco-farms
  - Parking gardens
  - City greenway—complementing mainstream infrastructural investments.





### Vegetated Riparian Bank

combines **regulating** and **cultural services** by capitalizing on the intrinsic aesthetics of the floodplain as residential frontage, protecting riparian functioning while increasing property values.

### City Greenway

protects the riparian landscape as a continuous ecosystem for optimum recreational and watershed functioning that provide **provisioning** and **cultural services**, including continuous wildlife corridors and sustained genetic diversity in **supporting services**.

### Neighborhood Drifts

combine linear remediation landscapes for auto parking, providing water and disturbance **regulating services**, with wildlife corridors and extensive habitat as **supporting services**.

### Floodplain Terraces

reconstruct wetland plant communities at the decommissioned waste water treatment plant providing water and disturbance **regulating services**, while offering **cultural services** through recreational amenities.





# 03 MILL CREEK WATERSHED (Late 1990s)

## *Community-first planning effort*

Mill Creek Watershed Redevelopment Project  
+ West Philadelphia Landscape Project  
West Philadelphia, Pa  
Length: 5 Miles

### WHY IS IT SIMILAR

- Neglect of Mill Creek led to cave-ins, polluted water downstream, and disadvantage for communities along the creek
- Vacant land along the creek was an opportunity to restore nature and rebuild neighborhoods

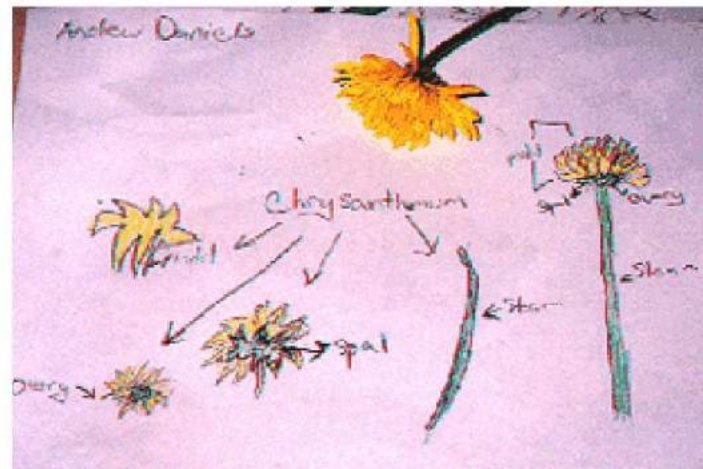
### STRATEGIES

- Multi-year, multi-platform, deep community engagement
- Community art for placemaking
- Reconnect communities to the natural and urban water resource
- Enhance the science and environmental curriculum at the neighborhood's Sulzberger Middle School
- Leverage multi-level government policies to create incentives for Stormwater BMP projects

<https://www.villanova.edu/content/dam/villanova/engineering/vcase/sym-presentations/2001/A31.pdf>  
<http://www.wplp.net/>









# 04 SAN PEDRO CREEK (2015-Ongoing)

San Antonio Watershed Authority+ San Pedro  
Creek Culture Park  
San Antonio, Texas  
Length: 2 Miles

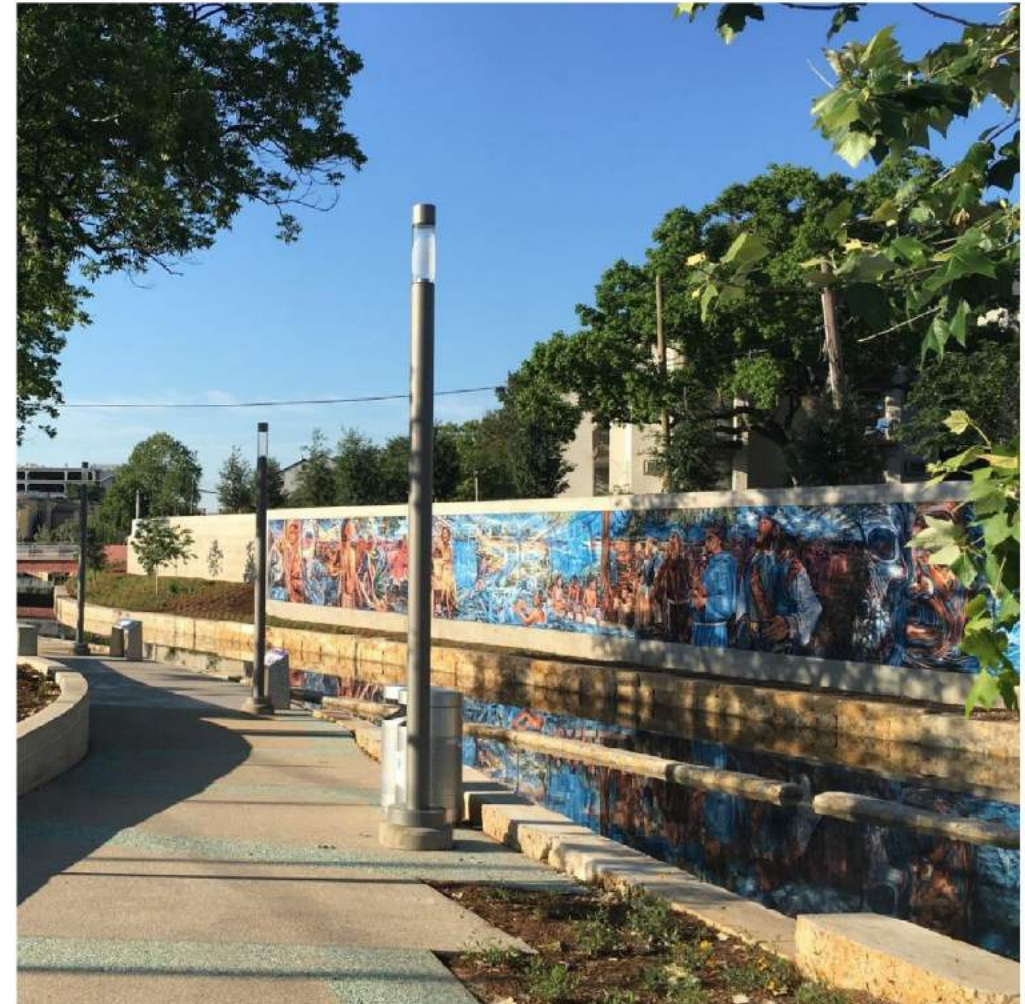
*Using the Creek to tell the story of San Antonio*

## WHY IS IT SIMILAR

- Need to upgrade existing stormwater infrastructure and increase access to the river
- Developed in an urban area west of downtown

## STRATEGIES

- Fuses public art, landscaping, and placemaking
  - 60,000 feet of new walls, murals and artwork
  - Four miles of walking trails
  - 11 acres of landscaping,
  - Eight restored and redesigned bridges.
- Green schools and place-based education









# PARK DESIGN

Interpretive,  
and innovative,  
recreational  
opportunities



Overlook



Riverine "Rooms"

Access to  
Water

Promote community  
values and local  
culture





# HABITAT RESTORATION

Ecological  
connections



Riparian Corridor BMPs



Habitat Crossings



Pollinator Sculpture



Bat Boxes



Living Structures



Bird Houses

Support Habitats



Stormwater Filtration



Stormwater Filtration

Clean  
Water



# GREEN INFRASTRUCTURE

Flood  
Management



Treatment  
& Filtration





# CONNECTIVITY



Trails,  
Paths &  
Bridges



Wayfinding &  
Interpretive  
Signage







## Item 9. Presentation on the City of Los Angeles' Biodiversity Index







## Item 10. Committee Member Comments







## Item 10. Announcement of future meetings and adjournment





# Contact Information

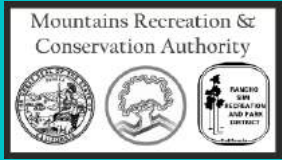
## Mountains Recreation and Conservation Authority

- Sarah Rascon, Urban River Program Officer, Primary Contact
  - Email: [sarah.rascon@mrca.ca.gov](mailto:sarah.rascon@mrca.ca.gov)
  - Tel. No. (323) 221-9944, Extension 109
- Melissa Vega, Project Analyst, Tertiary Contact
  - Email: [melissa.vega@mrca.ca.gov](mailto:melissa.vega@mrca.ca.gov)
  - Tel. No. (323) 221-9944, Extension 199

## Santa Monica Mountains Conservancy, Board Secretary

- Tel. No. (310) 589-3200, Extension 118





# AB 466: Upper Los Angeles River and Tributaries Revitalization Plan

## People and Recreation Committee Meeting

November 15, 2018