



AB 466 Upper Los Angeles River and Tributaries Revitalization Plan

Working Group Meeting 4
March 28, 2019

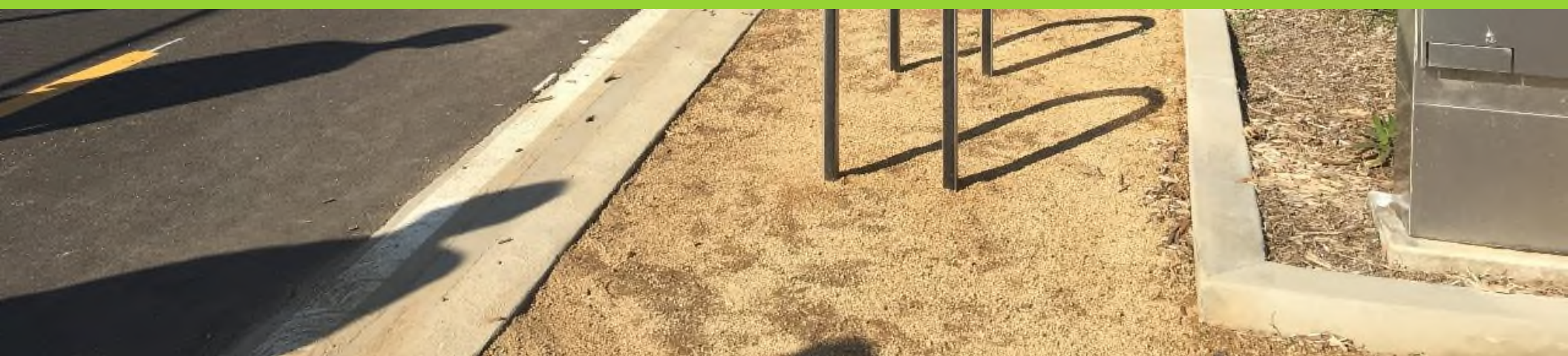
Santa Monica Mountains Conservancy

Meeting Agenda

1. Call to Order.
2. Administration of Oath of Office.
3. Roll Call.
4. Approval of minutes.
5. Comments from Members of the public on items not on the agenda and public testimony on all agenda items.
6. Reports from the Water & Environment and People & Recreation Committees.
7. Staff update.
8. Consideration of Resolution to adopt universal typologies for the revitalization plan
9. Polling activity, project attributes by tributary
10. Presentation by the State Water Resources Control Board regarding the Los Angeles River Flows Project.
11. Member comments on items not on the agenda
12. Adjournment

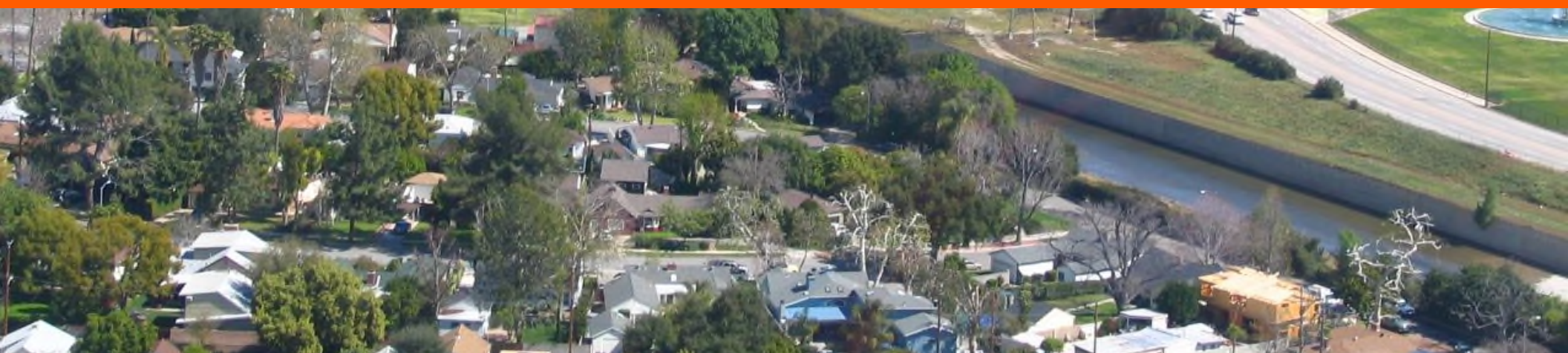


Item 1. Call to Order



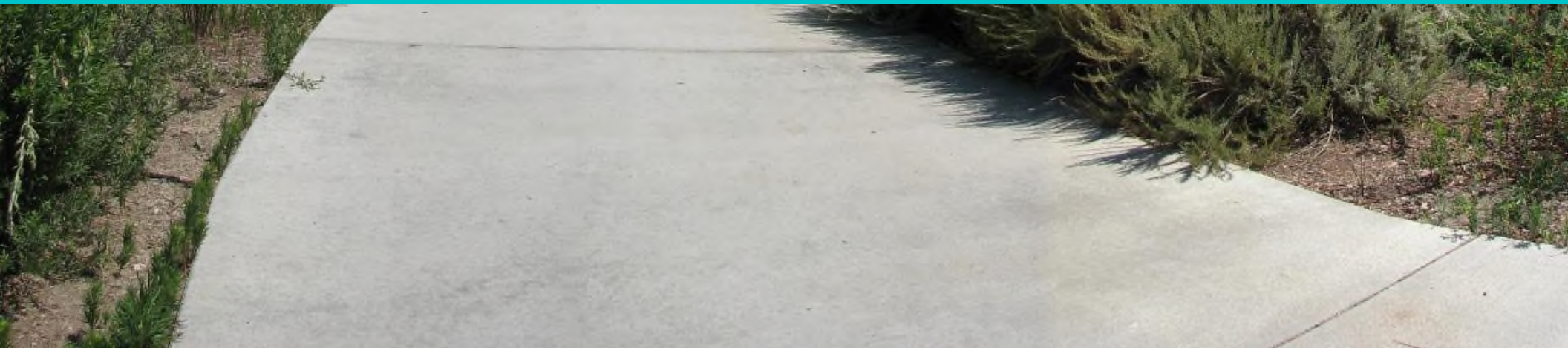


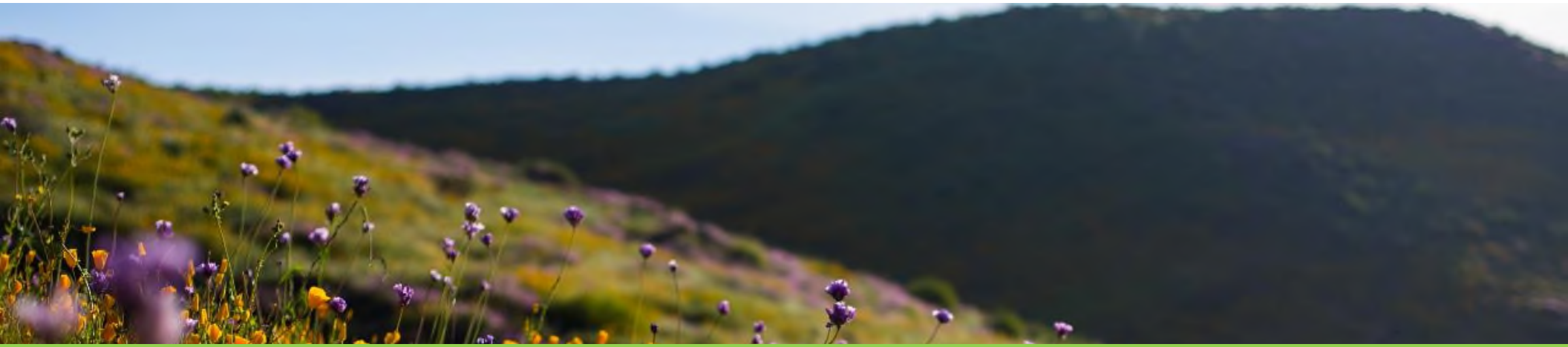
Item 2. Administration of Oath of Office



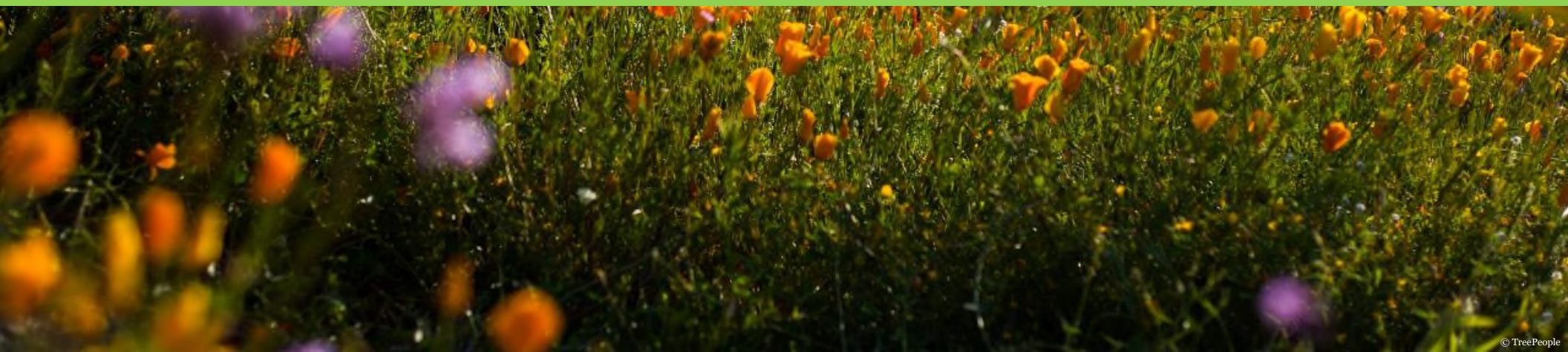


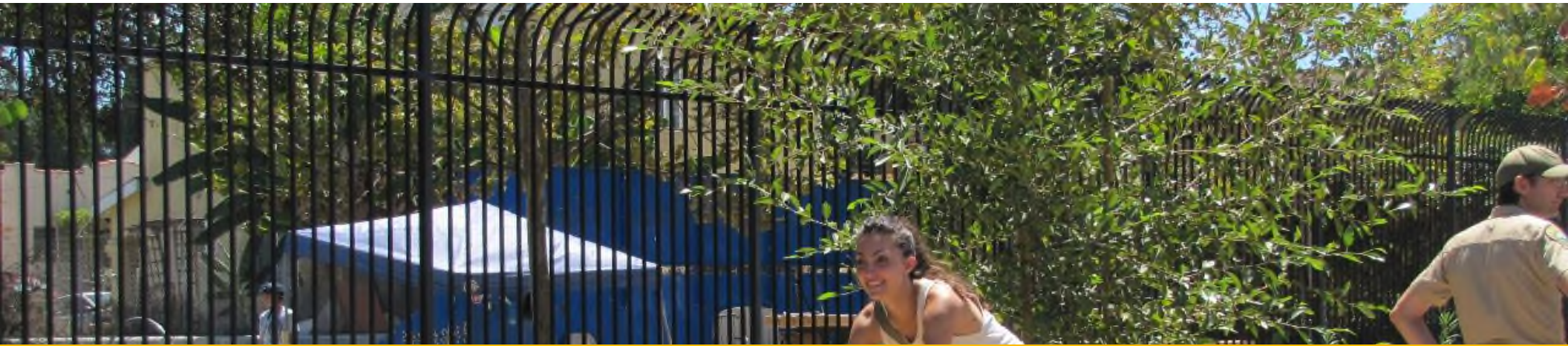
Item 3. Roll Call





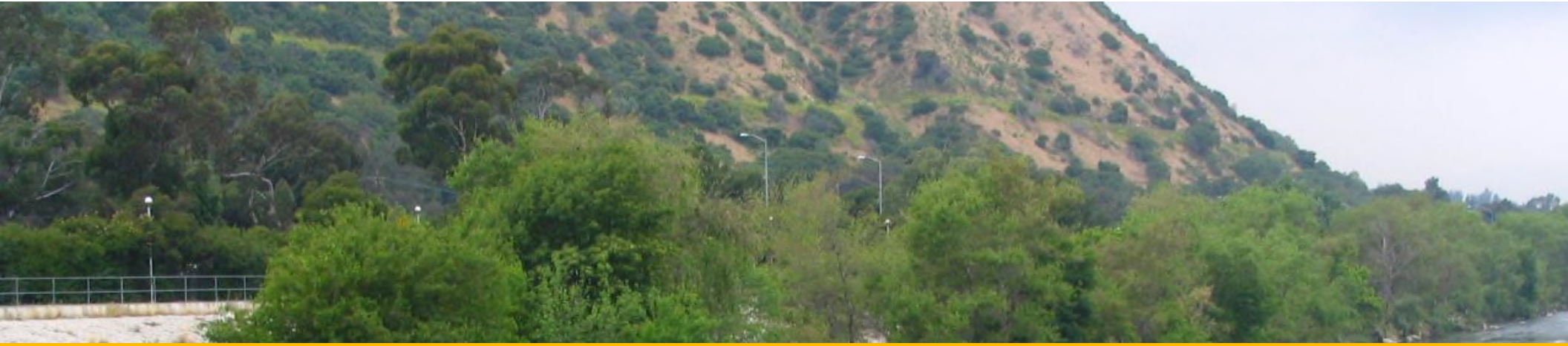
Item 4. Approval of Minutes



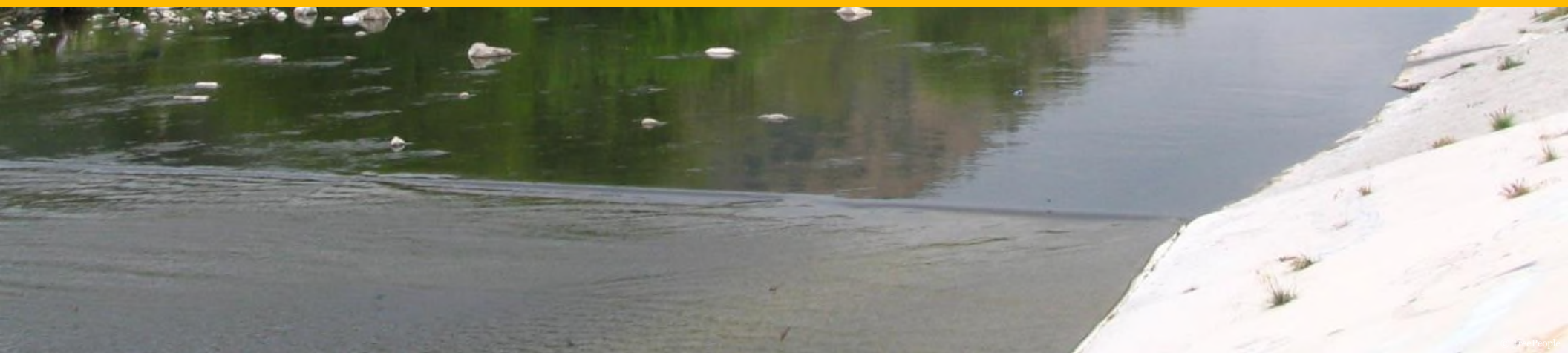


Item 5. Comments from members of the public on items not on the agenda and public testimony on all agenda items





Item 6. Reports from Water & Environment and People & Recreation Committee





Item 7. Staff Update



Community Outreach

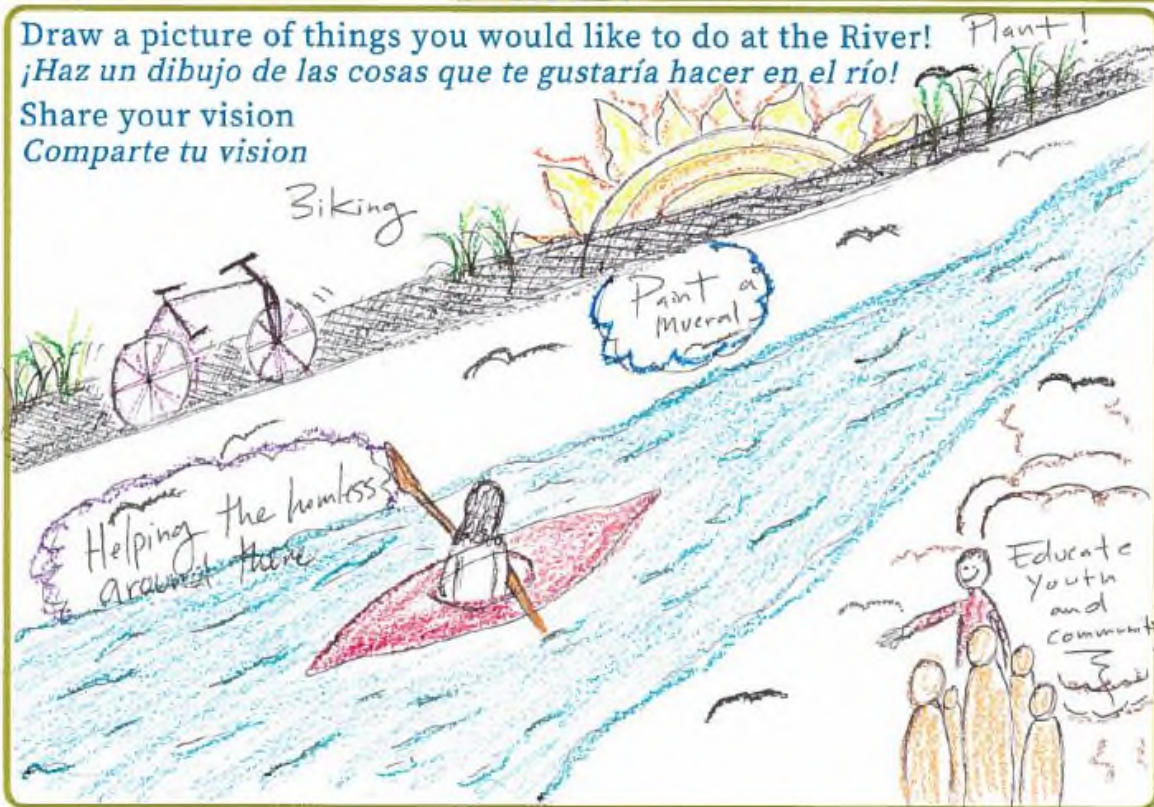
Reimagine Your River,
Creeks, and Streams

Draw a picture of things you would like to do at the River!

¡Haz un dibujo de las cosas que te gustaría hacer en el río!

Share your vision

Comparte tu vision



Community Outreach

Reimagine Your River,
Creeks, and Streams



Draw a picture of things you would like to do at the River!
¡Haz un dibujo de las cosas que te gustaría hacer en el río!

Share your vision
Comparte tu vision



I would like to see
the wash become the ultimate
recreational space with
proper lighting, trails, bike
paths and trees.



Community Outreach



River Dreams

I have river dreams.

I dream of a river that is wide and narrow and
deep and shallow—a river that can be whatever
It wants and needs and was born to be.

A river clean and fresh, born of waters from the sky,
carried down the mountains and spreads itself out
and replenishes the lands as it share its life giving soul
as it makes its way to the sea.

I have river dreams and I know the river does too.
Amen.

Revitalization Plan for the ULART Draft Outline

The Plan (50-100 pages)

Purpose: Provide Actionable Outcomes and Workplan for Continuous Improvements

Tech. Appendix (500+ pages)

Purpose: Document the Guiding Principles and Framework

Draft Revitalization Plan Sections

Executive Summary

Table of Contents and Front End Material

1. Introduction and Story of the Tributaries

- + History
- + Purposes/Goals + Objectives
- + Analysis, Gaps, Regional Profile (Extent, Communities, Watershed)

2. Process & Outreach

- + Tributary and Project Selection (related to objectives)
- + Community Process

3. Revitalization Plan

- + Tributary-specific profile (maps, demographics, environment)
- + Project design highlights

4. Governance & Implementation

- + Phasing
- + Advocacy
- + Partnership

**What Else
Needs to be Added?**

Draft Revitalization Plan Sections- Technical Appendix

A. Guiding Principles and Framework (Methods)

- + Goals and Objectives
- + Baseline Conditions
- + Planning Framework (Prioritization Criteria)
- + Community Engagement Plan

B. Summary of Community Feedback (Results)

- + Materials created for outreach
- + Responses from outreach
- + Event summary forms

C. Multi-Benefit Revitalization Opportunities (Results)

- + Project, Tributary, and Plan Report Card
- + Highlighted Project Concepts Supporting information
- + List of all Opportunities for Enhancement and Revitalization

**What Else
Needs to be Added?**

Project Status Update

Working Group Meeting Date	OBJECTIVE
March 2019	Identify Priority sites and Opportunities
May 2019	Project Concept Development
July 2019	Develop ULART Revitalization Plan
September 2019	Vote on ULART Revitalization Plan

Project Status Update

2018

2019

Inventory
and Analysis

Initial
Opportunity
Sites

Draft
Framework

Constraints
Analysis

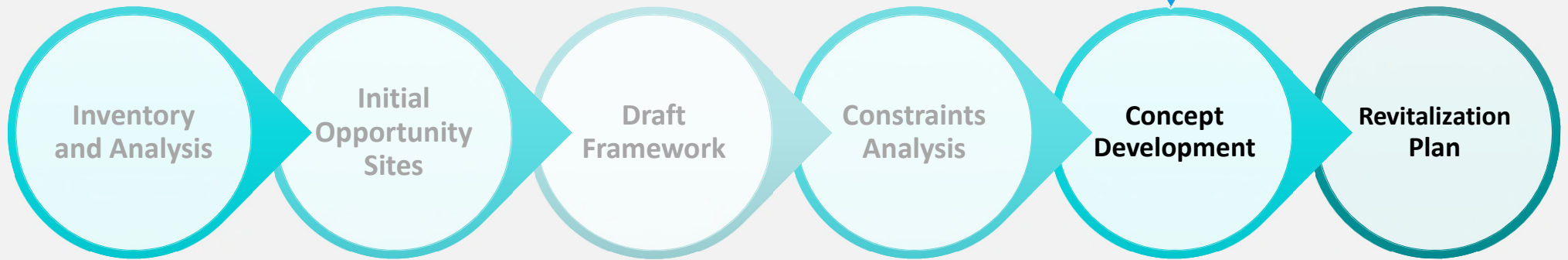
Concept
Development

Revitalization
Plan

YOU
ARE
HERE

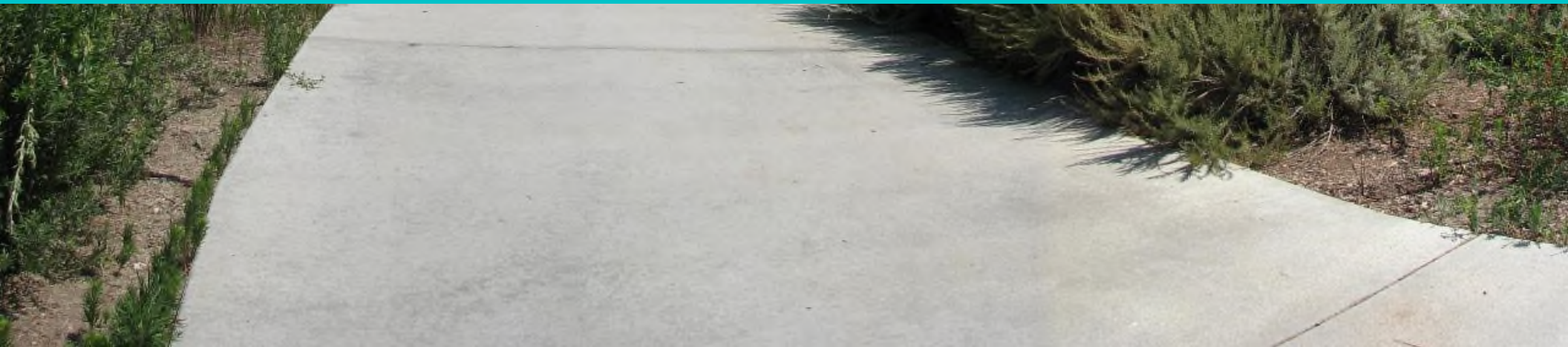
Community Engagement Plan

Community Outreach





Item 8. Consideration of Resolution to adopt universal typologies
for the revitalization plan



Goal

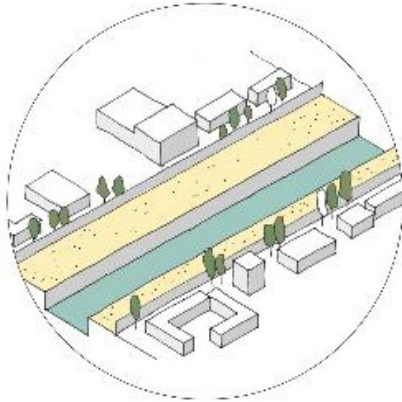
Explain, and get Working Group approval for, using typologies as a planning tool

Typology */tī'päləjē/*

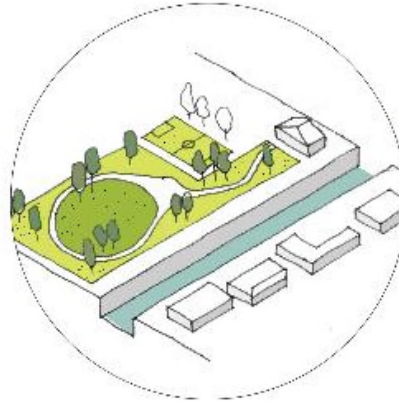
Definition:

1. The study of or analysis or classification based on types or categories¹.
2. Represent one kind of attribute or several and need include only those features that are significant for the problem at hand².

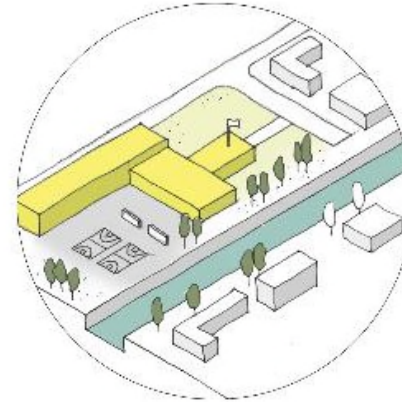
1. <https://www.merriam-webster.com/dictionary/typology>; 2. <https://www.britannica.com/science/typology>



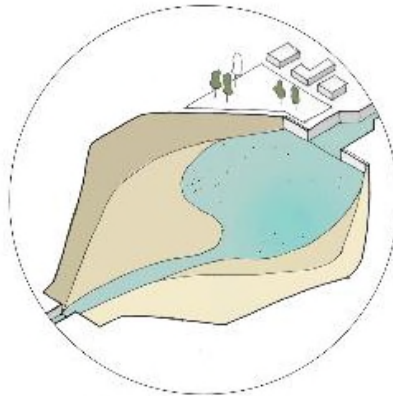
Channel Right of Way



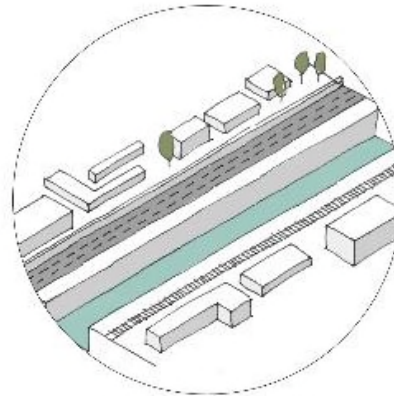
Existing Park



School



Stormwater Basin



Urban Barrier



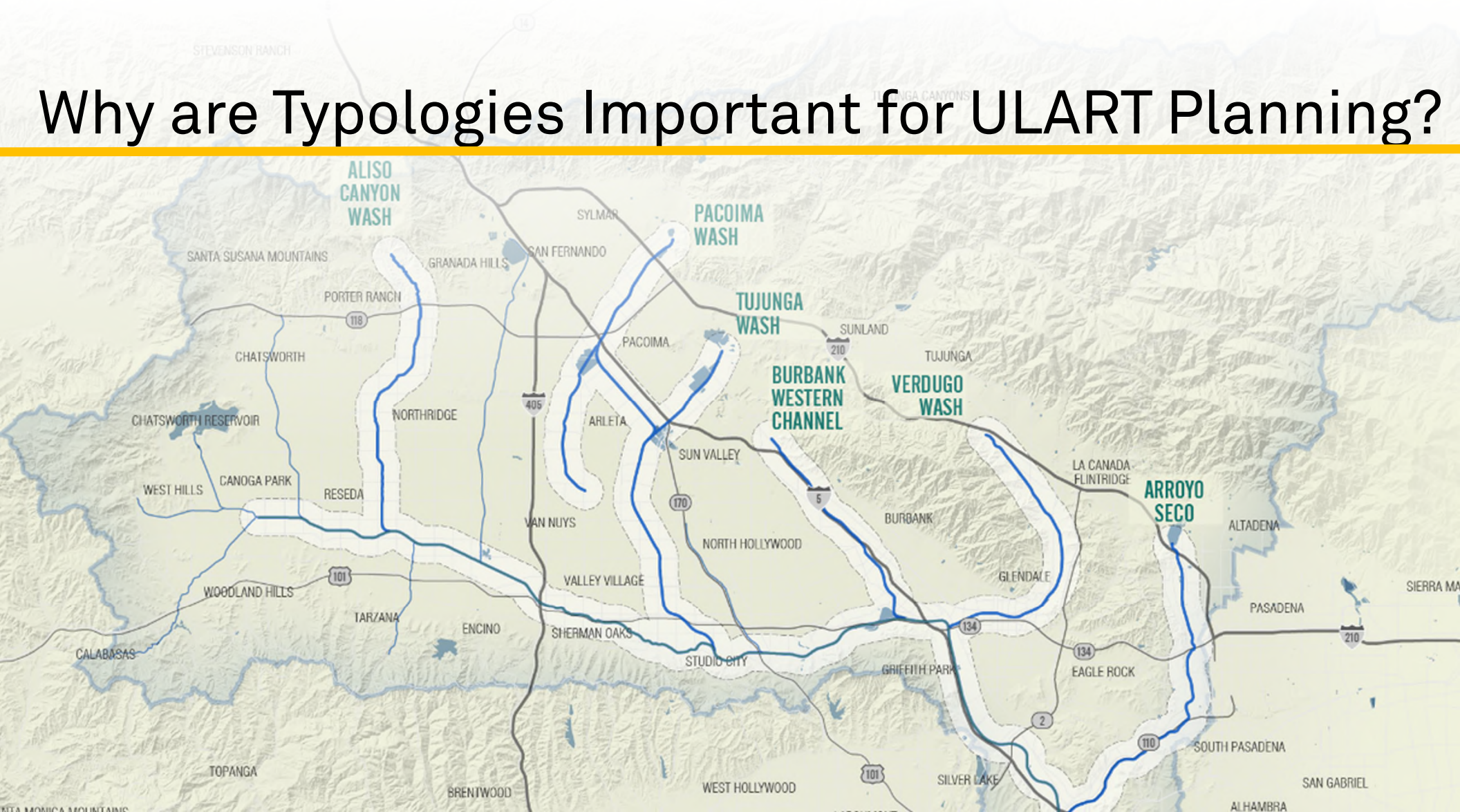
Ecological Connection

OPPORTUNITY SITE LAND TYPOLOGIES

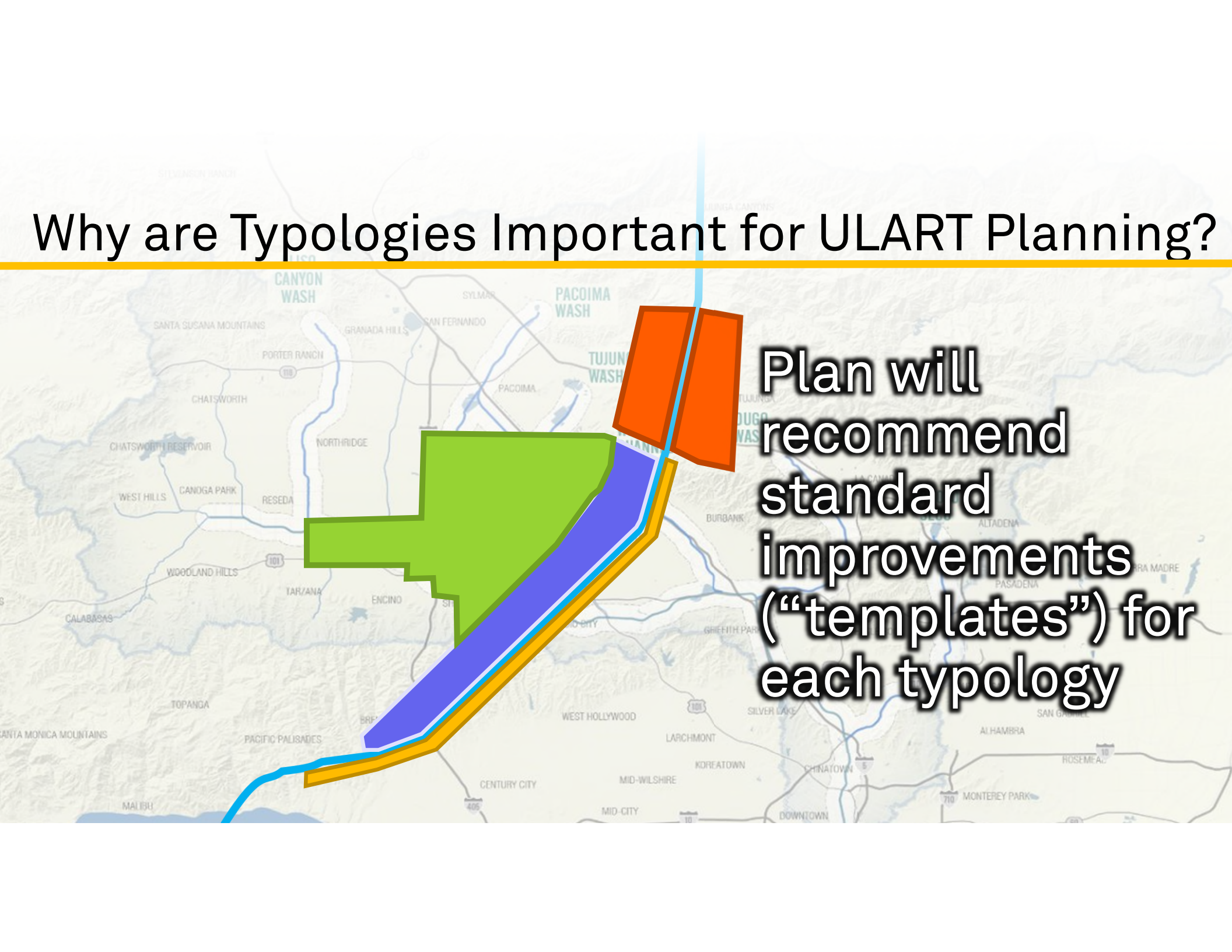
Other Recommended Typologies

- +Utility Easements**
- +River Confluences**
- +Others...?**

Why are Typologies Important for ULART Planning?



Why are Typologies Important for ULART Planning?

A map of Los Angeles and surrounding areas, including San Fernando, Burbank, and Pasadena. Overlaid on the map are several colored regions: a large green area in the central-northwest, a blue area running diagonally from the center towards the southeast, and a yellow area along the southern edge of the blue area. Two orange rectangular shapes are positioned in the upper right, near the San Gabriel Mountains. The text 'Plan will recommend standard improvements (“templates”) for each typology' is overlaid on the right side of the map.

Plan will recommend standard improvements (“templates”) for each typology

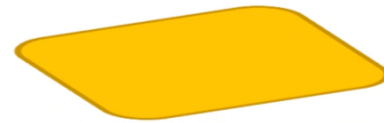
Why are Typologies Important for ULART Planning?



Typology A



Typology B



Typology C



Typology D

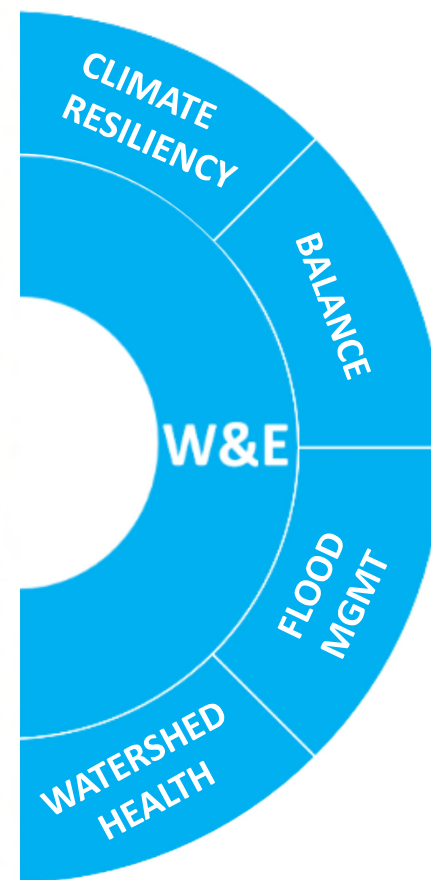
WILBUR DEBRIS BASIN

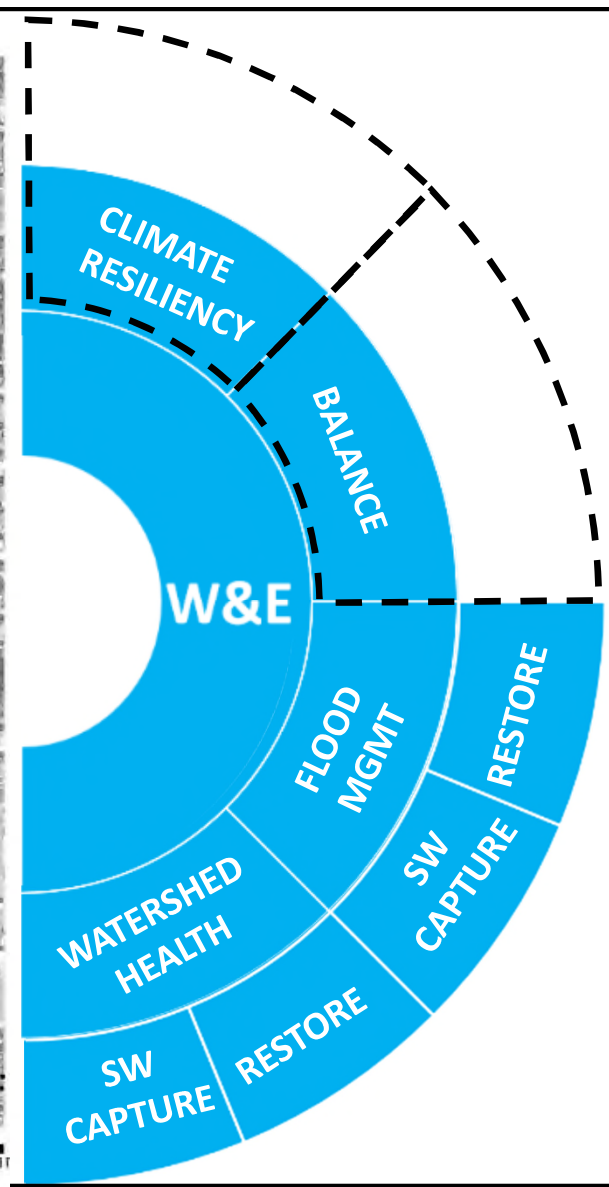
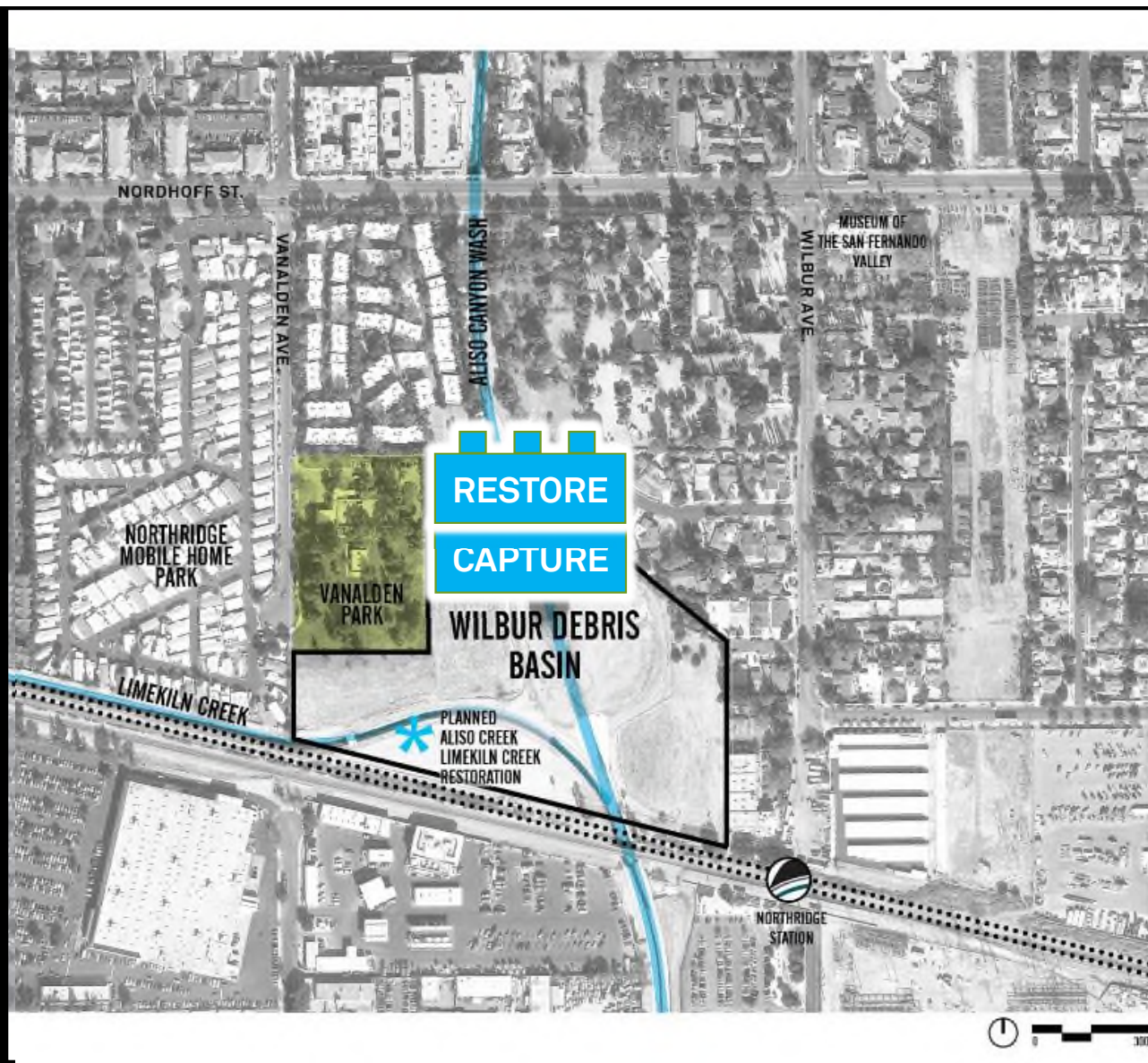
ALISO CANYON WASH

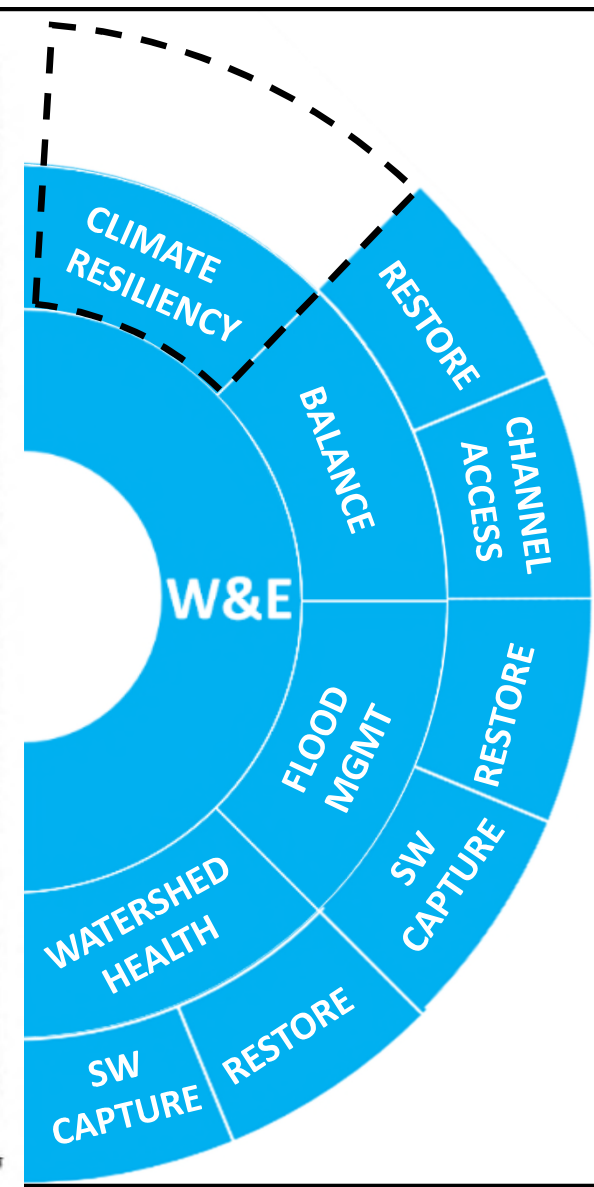
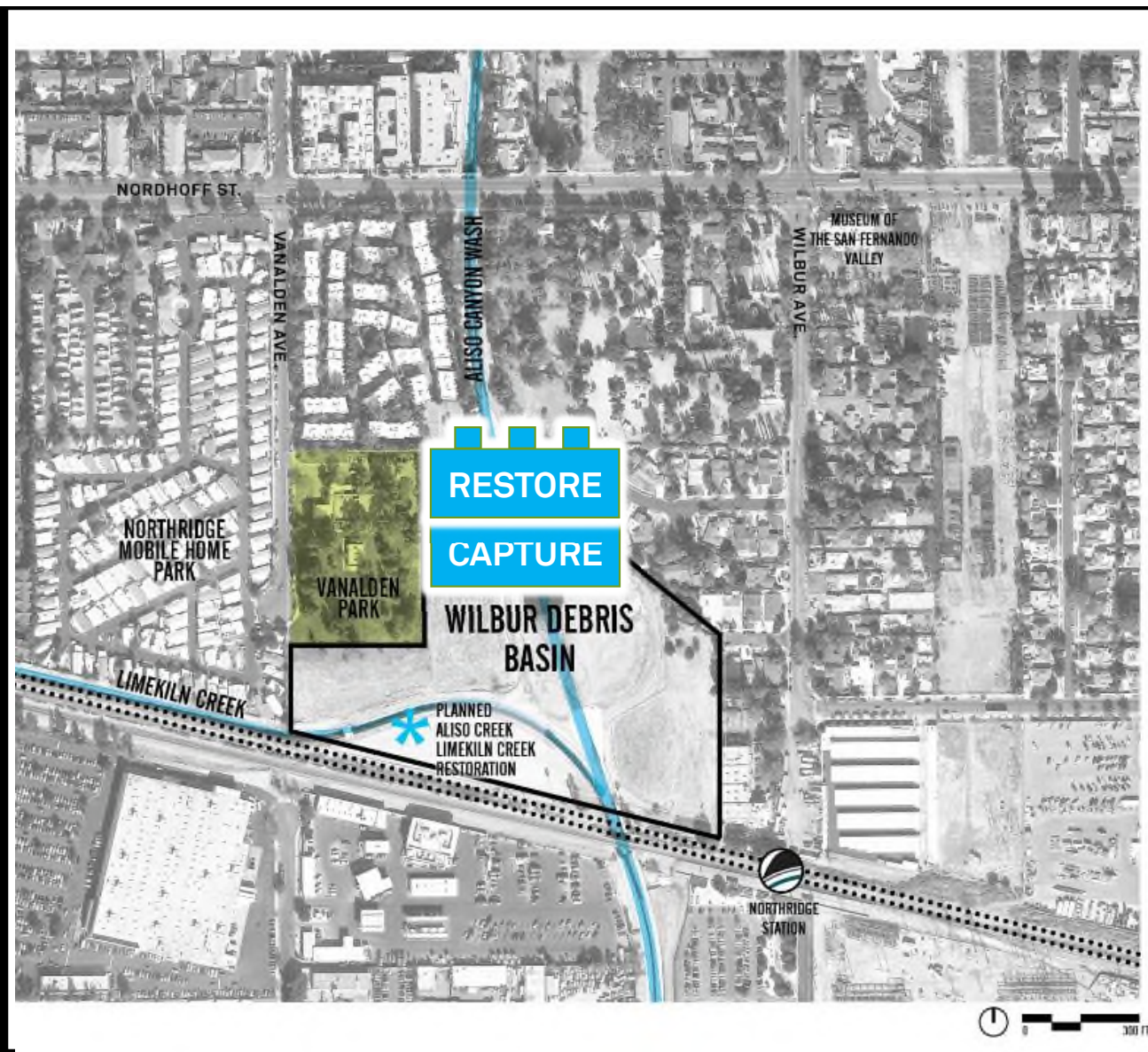
- + Aliso Canyon Wash
- + Publicly Owned Land
- + Tributary Adjacent
- + Portions Already Planned
- + Comment from November Committee Meeting

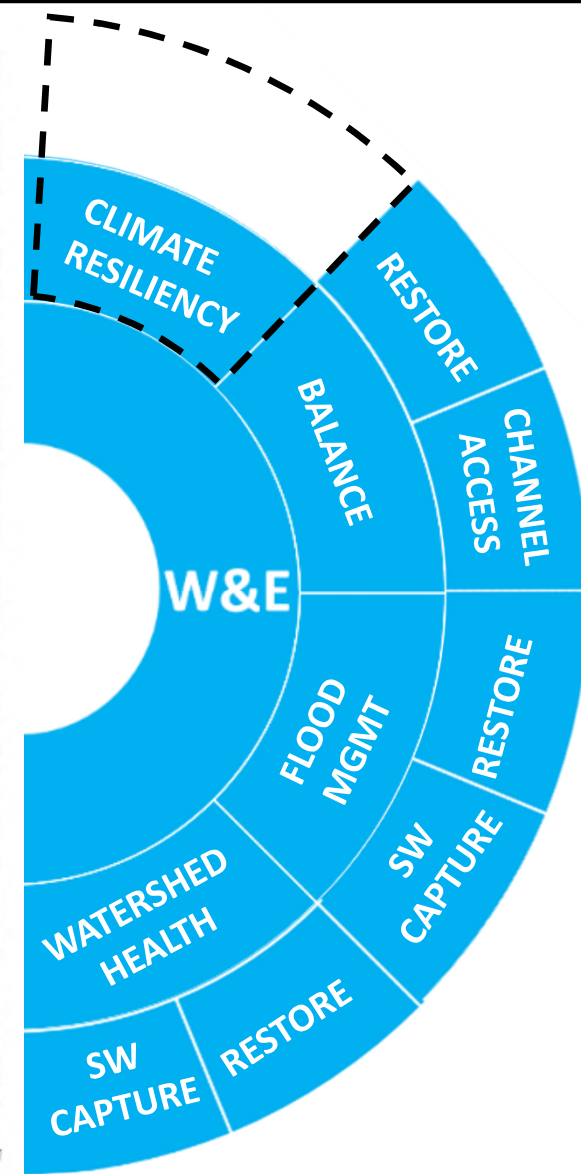
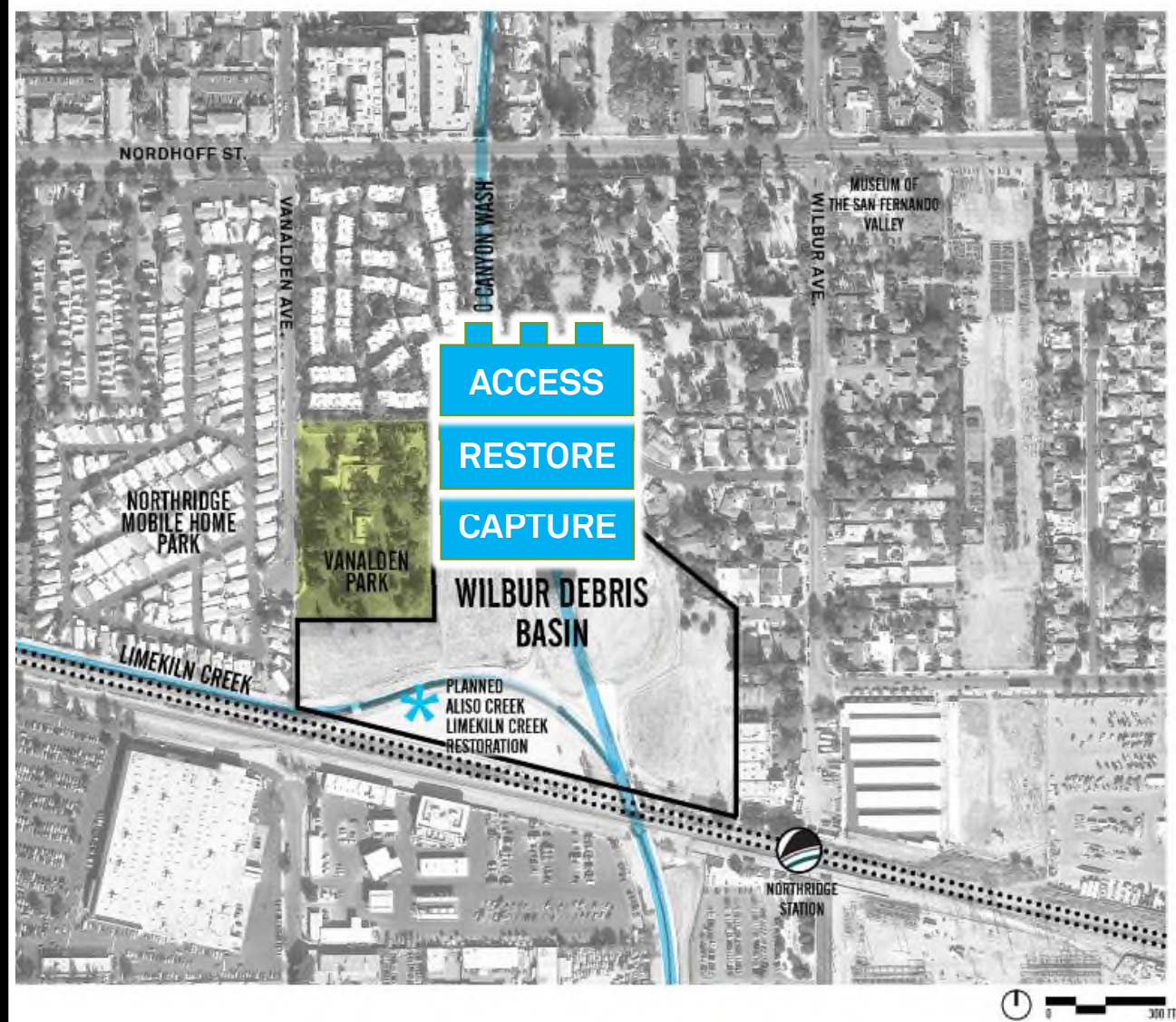
STUDIO-MLA



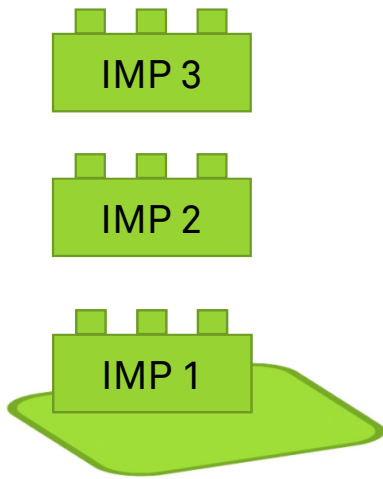




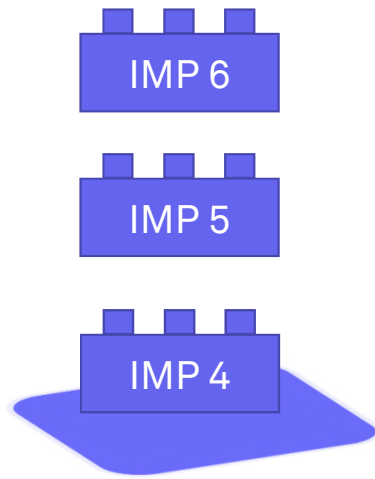




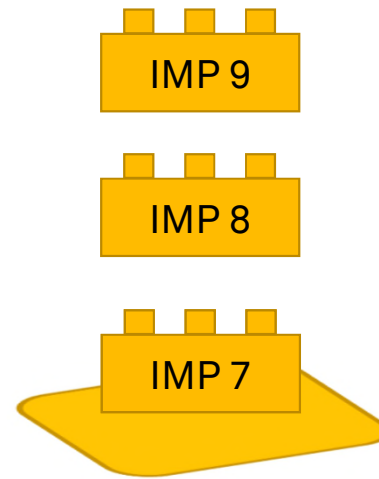
Why are Typologies Important for ULART Planning?



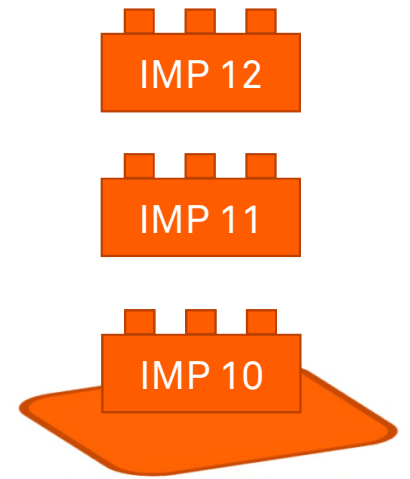
Typology A



Typology B



Typology C



Typology D

WILBUR DEBRIS BASIN

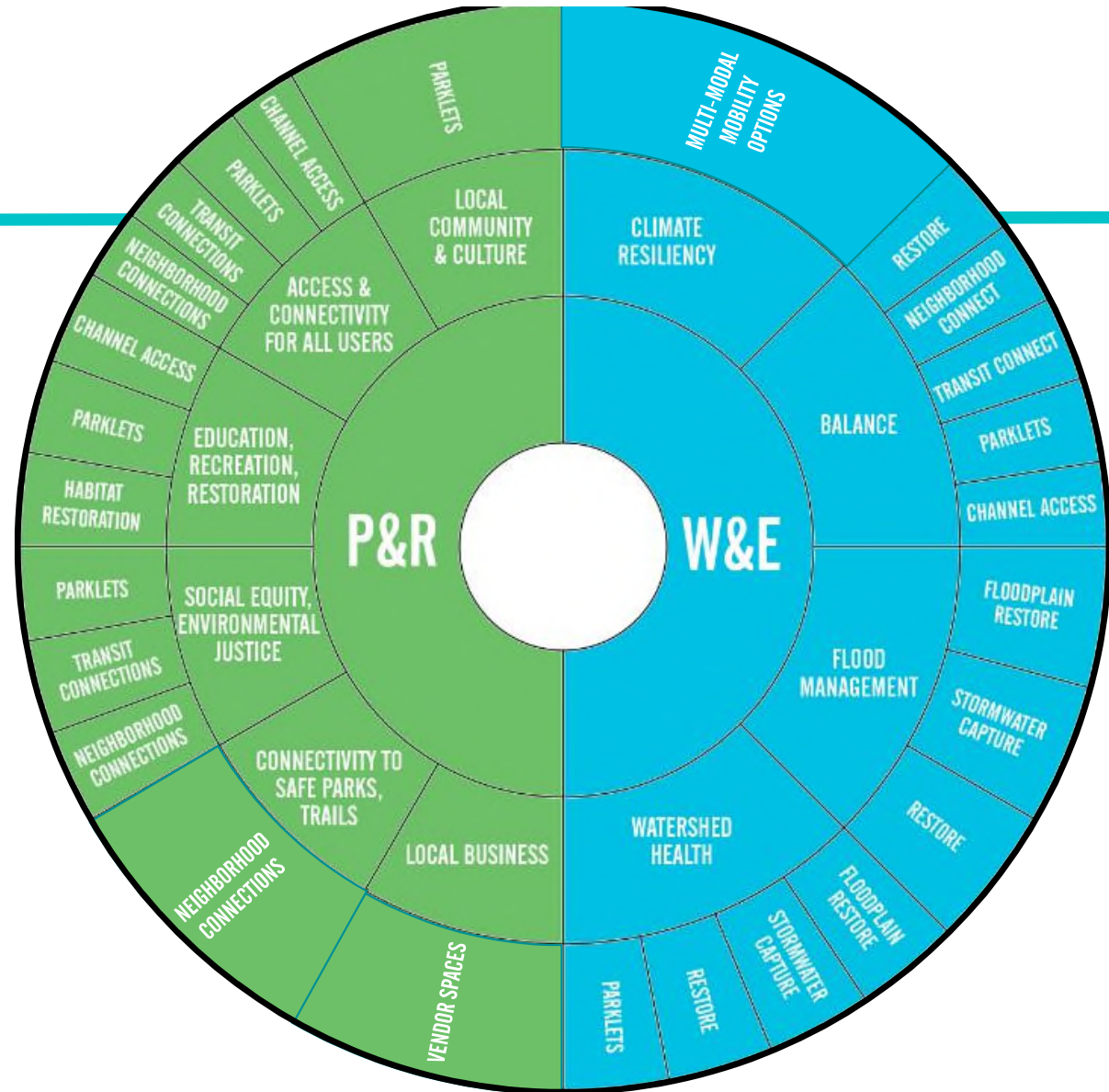
ALISO CANYON WASH

- + Aliso Canyon Wash
- + Publicly Owned Land
- + Tributary Adjacent
- + Portions Already Planned
- + Comment from November Committee Meeting

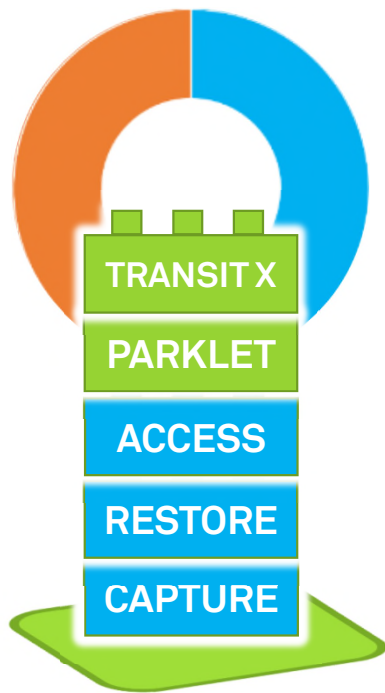
STUDIO-MLA



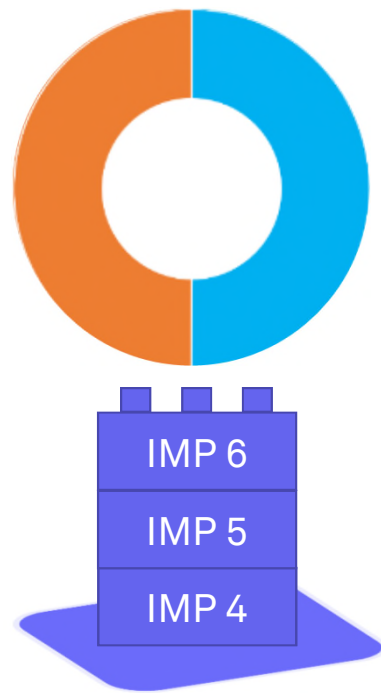
Multi-Benefit Foundation



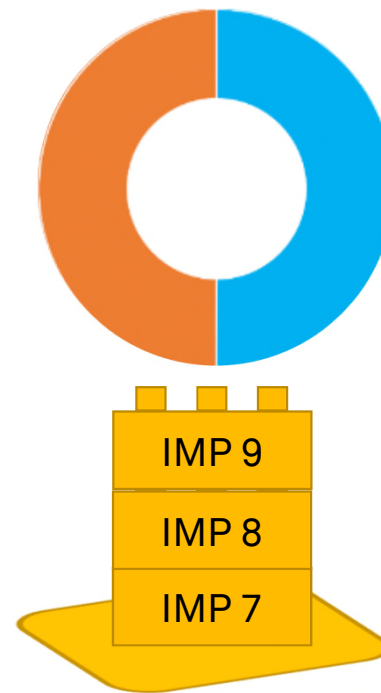
Why are Typologies Important for ULART Planning?



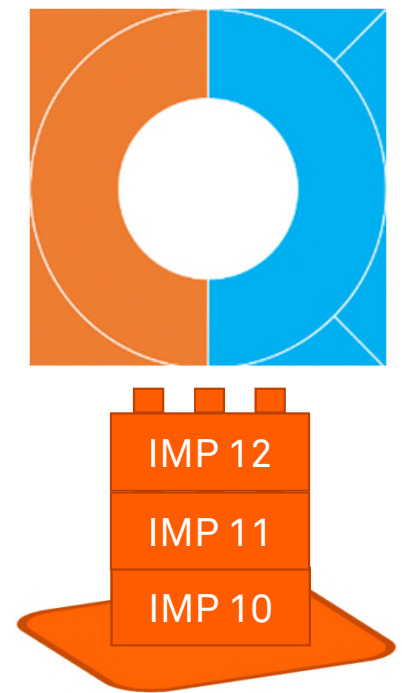
Stormwater
Basins



Typology B



Typology C



Typology D

Typologies Inform Site Improvements, But Doesn't End There...

- +Typologies provide a **baseline** of multiple benefits
- +Working Group, Committees, and Community will then review and augment with their preferences to create **community identity**

List of Recommended Universal Typologies

+Channel Right-of-Way

+Parks

+Schools

+Stormwater Basins

+Urban Barriers

+Ecological Connections

+Utility Easements

+River Confluences

+Others...?

Example Typology – Right-of-Way



Example Typology – Parks



Example Typology - Schools



Example Typology - Stormwater Basin



Example Typology – Urban Barrier



Example Typology – Ecological Connection



Example Typology – Utility Easements



Example Typology – River Confluences



List of Recommended Universal Typologies

Decision: Adopt typologies to prescribe an initial foundation of multi-benefit improvements in gap areas?

- | | |
|------------------------------|-----------------------------------|
| +Channel Right-of-Way | + <u>River Confluences</u> |
| +Parks | + <u>River Parks</u> |
| +Schools | + <u>Hidden Tribs</u> |
| +Stormwater Basins | + <u>Commercial/Industrial</u> |
| +Urban Barriers | + <u>Residential</u> |
| +Ecological Connections | + <u>Bridge Crossings</u> |
| + <u>Utility Easements +</u> | + <u>Transportation Corridors</u> |
| + <u>Public land</u> | |

Typology recommended by WG



Item 9. Polling activity regarding project improvement prioritization.



ITEM GOAL

Understand the factors your community wants to focus on in the **first** round of opportunity sites.

There will be **six** sites chosen for concept development, one for each tributary.

A MISSION-DRIVEN FRAMEWORK

CALENVIRO SCREEN

CalEnviroScreen uses environmental, health, and socioeconomic information to identify California communities that are especially vulnerable to pollution’s effects

OEHAA (Office of Environmental Health Hazard Assessment) defines disadvantaged communities as those with a CalEnviroScreen of 75% or more. **A HIGHER score indicates more disadvantage.**

AB466

Assembly Bill (AB) 466 was created to appoint a Working Group for the Upper LA River and Its Tributaries and develop a community-centric, watershed based revitalization plan.

Emphasis was placed on

- Addressing communities around the Upper LA River and her tributaries
- Recognizing the value of the waterways through watershed education programs
- Disadvantaged communities

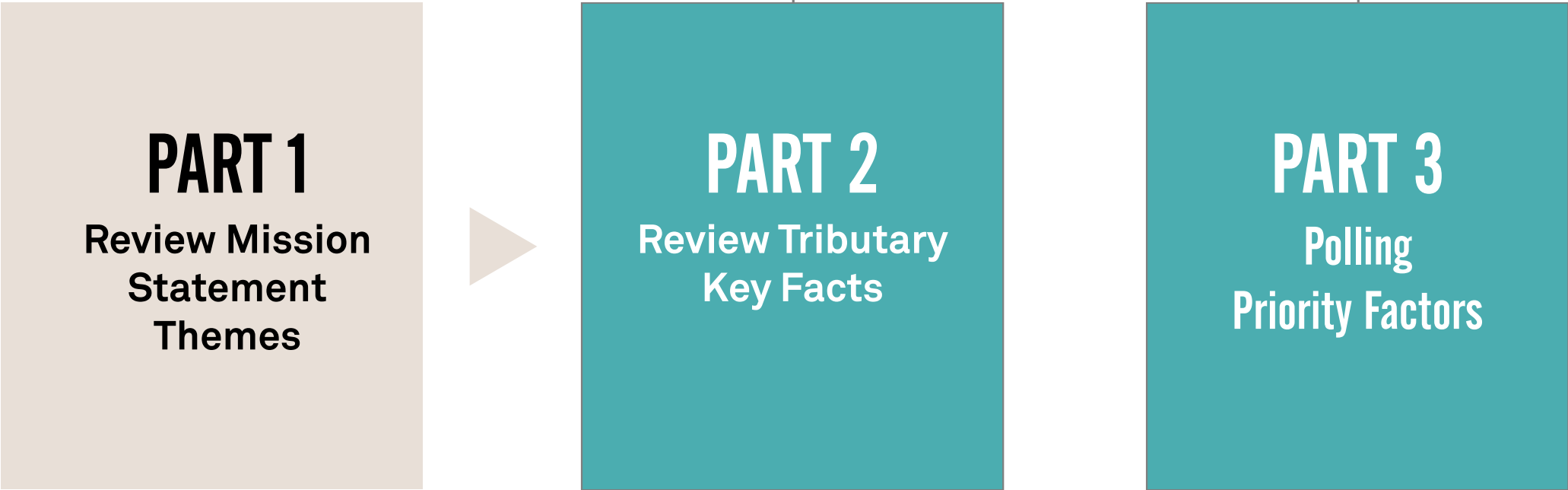
A MISSION-DRIVEN FRAMEWORK

WORKING GROUP'S MISSION STATEMENT

The working group developed a mission statement that focused on the following six components:



PROCESS



PART 1
MISSION THEMES

MISSION THEMES

01
NATURE
BASED
SOLUTIONS

- Ecosystem
- Habitat
- Biodiversity
- Passive recreation
- In sync with the flow regime



INTRO

THEMES

ALISO

PACOIMA

TUJUNGA

BURBANK

VERUDUGO

ARROYO SECO

MISSION THEMES

02
WATERSHED
MANAGEMENT

- Watershed Health
- Water Supply
- Water Quality



INTRO

THEMES

ALISO

PACOIMA

TUJUNGA

BURBANK

VERUDUGO

ARROYO SECO

MISSION THEMES

03 FLOOD RISK

Reduction and
management of
existing flood risks
to communities



SPREADING GROUNDS

INTRO

THEMES

ALISO

PACOIMA

TUJUNGA

BURBANK

VERUDUGO

ARROYO SECO

MISSION THEMES

04

OPEN SPACE & RECREATION

- Opportunities for education, recreation
- In sync with flow regimes



INTRO

THEMES

ALISO

PACOIMA

TUJUNGA

BURBANK

VERUDUGO

ARROYO SECO

MISSION THEMES

05
ACCESS +
CONNECTION

Identify and create improved, inspirational, inclusive access and connectivity to public space, the river and tributaries for all users



LIGHTING & SAFETY



INTRO	THEMES	ALISO	PACOIMA	TUJUNGA	BURBANK	VERUDUGO	ARROYO SECO
-------	--------	-------	---------	---------	---------	----------	-------------

MISSION THEMES

06
COMMUNITY

- Emphasis on underserved areas
- Feature and promote the importance of the community and local culture
- Strengthen local business and vendors to foster job creation and economic growth
- Culture, arts, education and economy



INTRO

THEMES

ALISO

PACOIMA

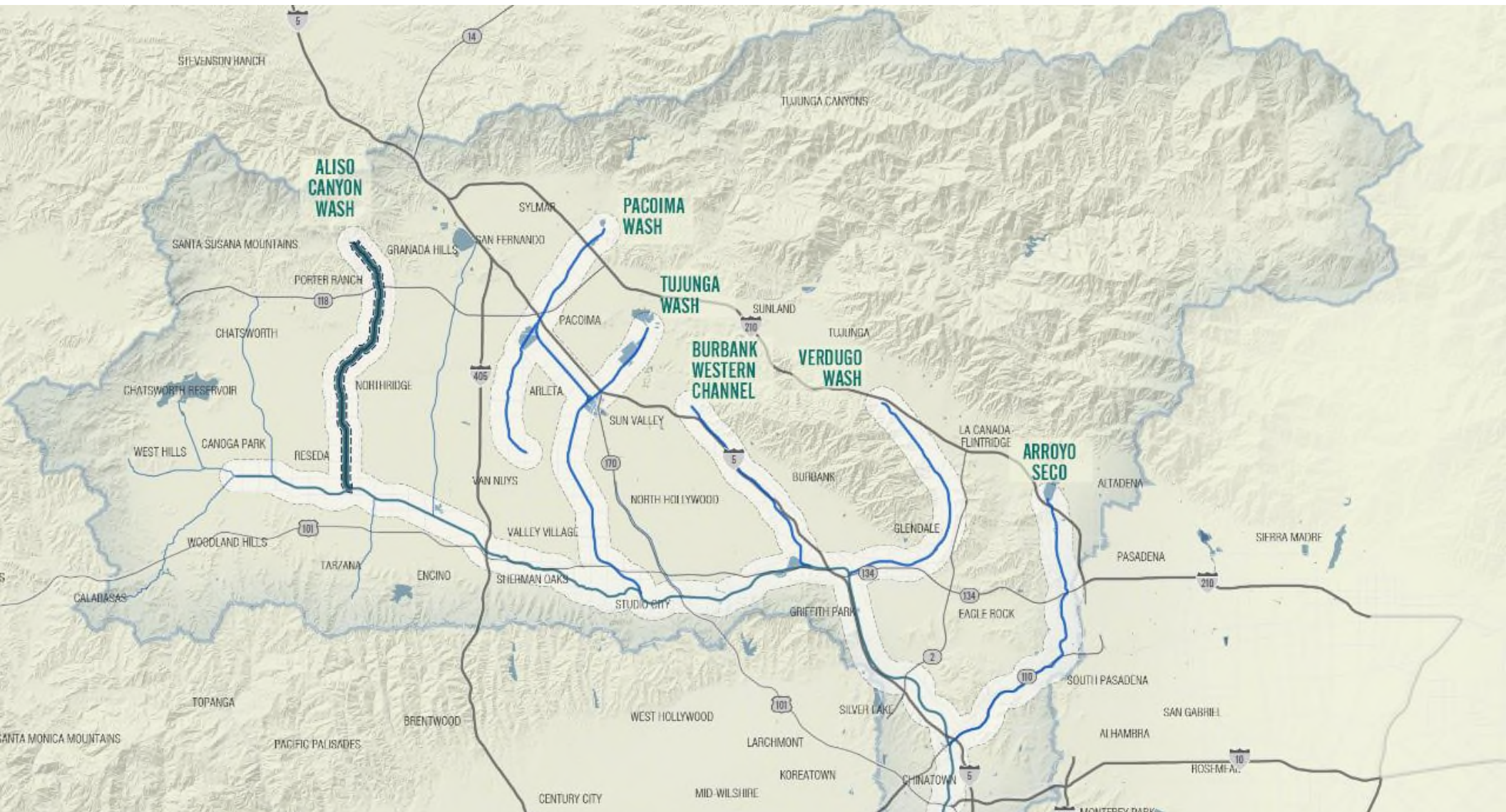
TUJUNGA

BURBANK

VERUDUGO

ARROYO SECO

PART 2 & 3
TRIBUTARY REVIEW & POLLING



INTRO	THEMES	ALISO	PACOIMA	TUJUNGA	BURBANK	VERUDUGO	ARROYO SECO
-----------------------	------------------------	-----------------------	-------------------------	-------------------------	-------------------------	--------------------------	-----------------------------

TRIBUTARY REVIEW

ALISO CANYON

CALENVIROSCREEN

CORRIDOR AVERAGE - 60%

Key observations about the Aliso Canyon Wash from the literature review, site visits, research, committee and working group meetings.



- Schools
- Public Land
- Open Space



INTRO

THEMES

ALISO

PACOIMA

TUJUNGA

BURBANK

VERUDUGO

ARROYO SECO

TRIBUTARY REVIEW

ALISO CANYON

CALENVIROSCREEN

CORRIDOR AVERAGE - 60%

Key observations about the Aliso Canyon Wash from the literature review, site visits, research, committee and working group meetings.

Mountain Lion Kitten tagged in Santa Susana Mountains



ALISO CANYON CORRIDOR

KEY NATURE-BASED SOLUTION FACTS

Santa Susana Mountains, a proposed significant ecological area, is within 1 mile of the wash

“ Many people don’t know about the Santa Susana Mountains”

- Working Group Member

NATURE-BASED SOLUTION

TRIBUTARY REVIEW

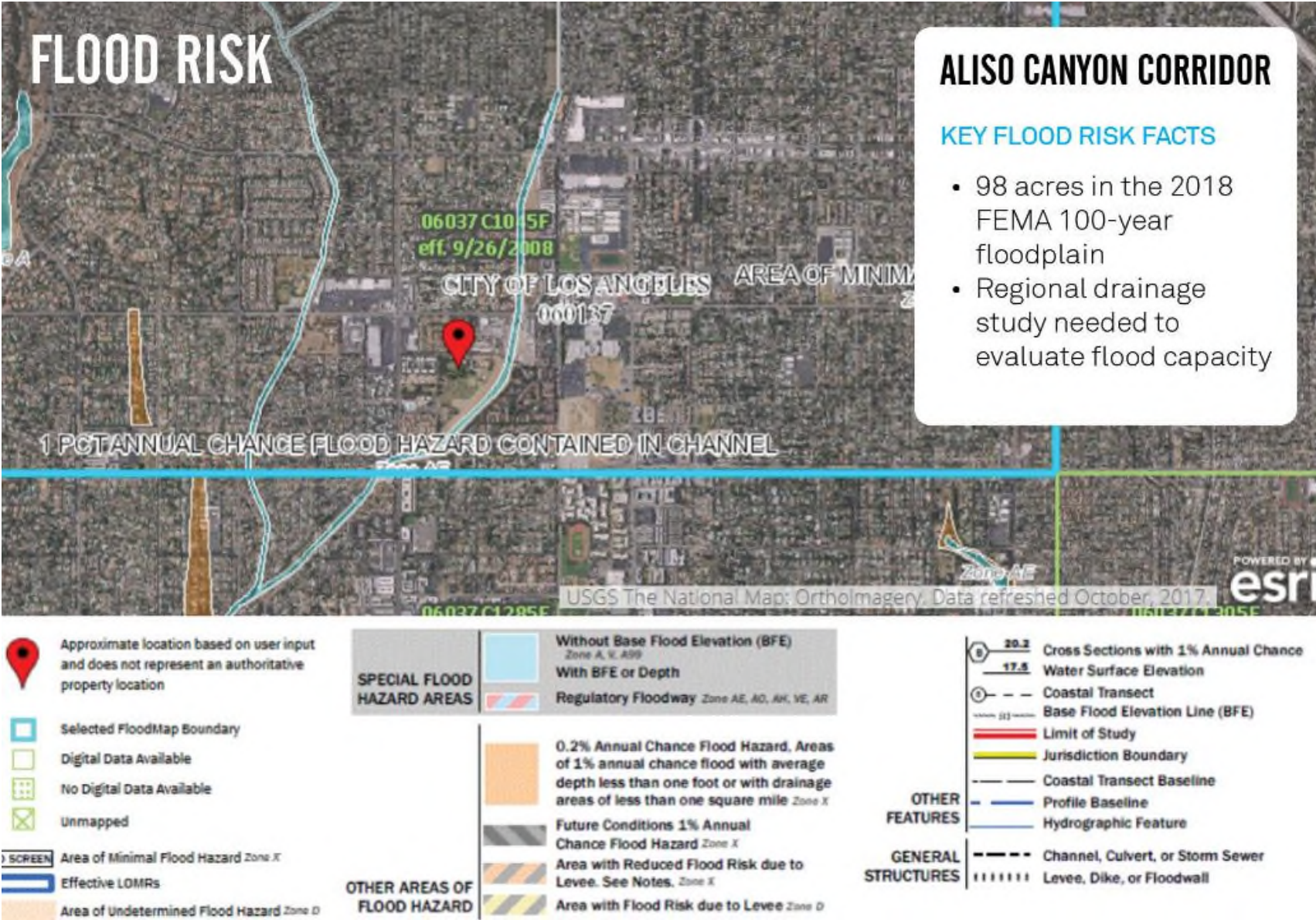
ALISO CANYON

CALENVIROSCREEN

CORRIDOR AVERAGE - 60%

Key observations about the Aliso Canyon Wash from the literature review, site visits, research, committee and working group meetings.

FEMA flood map



TRIBUTARY REVIEW

ALISO CANYON

CALENVIROSCREEN

CORRIDOR AVERAGE - 60%

Key observations about the Aliso Canyon Wash from the literature review, site visits, research, committee and working group meetings.

Wilbur Debris Basin

“Schools could help monitor the water quality”

- Member of Public

ALISO CANYON CORRIDOR

KEY WATERSHED MANAGEMENT FACTS

- 9,360 linear feet of Aliso Canyon Wash in the urban corridor are soft bottom.
- High need for stormwater capture projects (EWMP)

WATERSHED MANAGEMENT



TRIBUTARY REVIEW

ALISO CANYON

CALENVIROSCREEN

CORRIDOR AVERAGE - 60%

Key observations about the Aliso Canyon Wash from the literature review, site visits, research, committee and working group meetings.

Vanalden Park

“ The parks could be reconfigured into multi-benefit spaces”

- Working Group Member

ALISO CANYON CORRIDOR

KEY OPEN SPACE AND RECREATION FACTS

- 1.91 acres of park space per 1,000 people¹
- 13.1 acres per 1,000 people (National Avg)²
- 11 parks

¹LA County Park Assessment

² Trust for Public Land



OPEN SPACE AND RECREATION

TRIBUTARY REVIEW

ALISO CANYON

CALENVIROSCREEN

CORRIDOR AVERAGE - 60%

Key observations about the Aliso Canyon Wash from the literature review, site visits, research, committee and working group meetings.

CSUN

““Opportunity for educational engagement. Lots of Schools!”

- Member of Public

ALISO CANYON CORRIDOR

KEY SAFE ACCESS FACTS

- Transmission corridors along the tributary
- Maintenance roads typical on at least one side of the waterway
- Key Points of Interest within 0.5 miles
 - Cal State Northridge
 - Metrolink Northridge Station
 - 17 schools
 - 11 parks

ACCESS + CONNECTION

TRIBUTARY REVIEW

ALISO CANYON

CALENVIROSCREEN

CORRIDOR AVERAGE - 60%

Key observations about the Aliso Canyon Wash from the literature review, site visits, research, committee and working group meetings.

Downtown Northridge

“ Can we create something for the community? For both children and seniors?”

-Working Group Member

ALISO CANYON CORRIDOR

KEY COMMUNITY FACTS

- CalEnviroScreen Score: 60% ¹
- Density: 19 people/acre (13 people/acre - LA County Avg)²
- 17 schools and 11 parks within 0.5 miles
- Runs through
 - Porter Ranch
 - Northridge
 - Reseda

¹ CES 3.0, OEHHA

² US Census, 2010

COMMUNITY

POLLING

ALISO CANYON

CALENVIROSCREEN
CORRIDOR AVERAGE - 60%

Please identify
the **TOP 2**
themes for your
community in the
first round of
opportunity sites



INTRO

THEMES

ALISO

PACOIMA

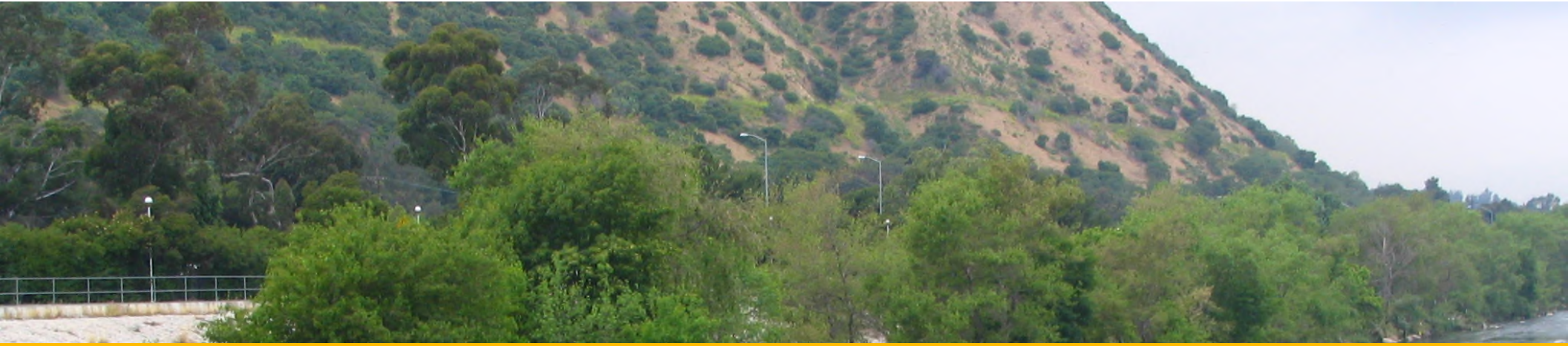
TUJUNGA

BURBANK

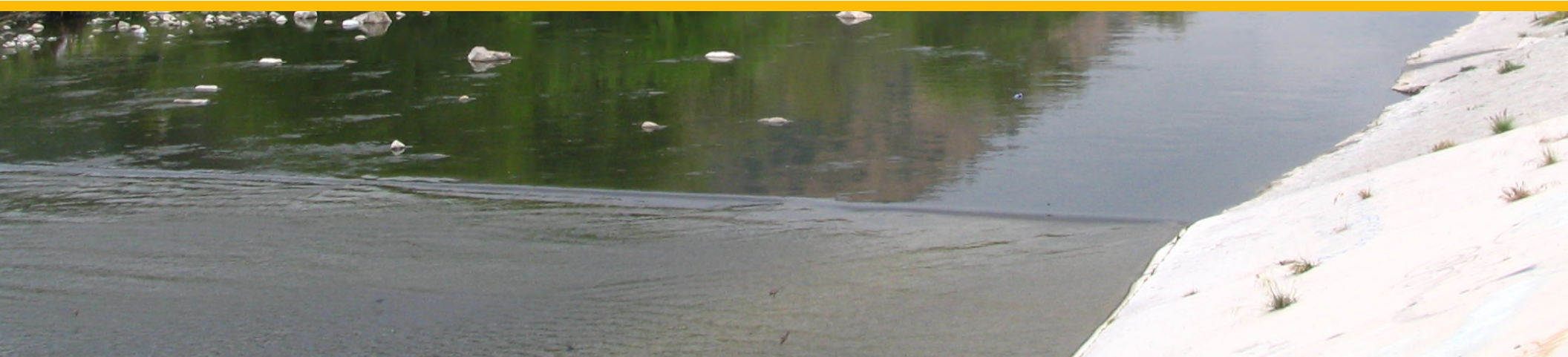
VERUDUGO

ARROYO SECO

End of Presented Materials for Item 9

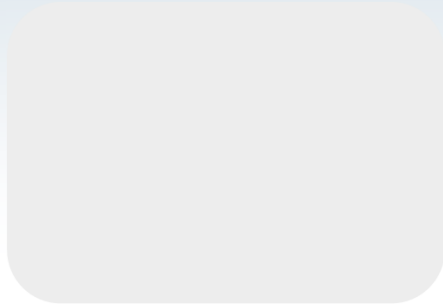


Item 10. Presentation by State Water Resources Control Board regarding the Los Angeles River Flows Project.



Establishing Environmental Flows for the Los Angeles River

**Upper LA River and Tributaries (ULART)
Working Group Meeting
March 28, 2019**



PROJECT OVERVIEW

Los Angeles River Environmental Flows

Project Goals

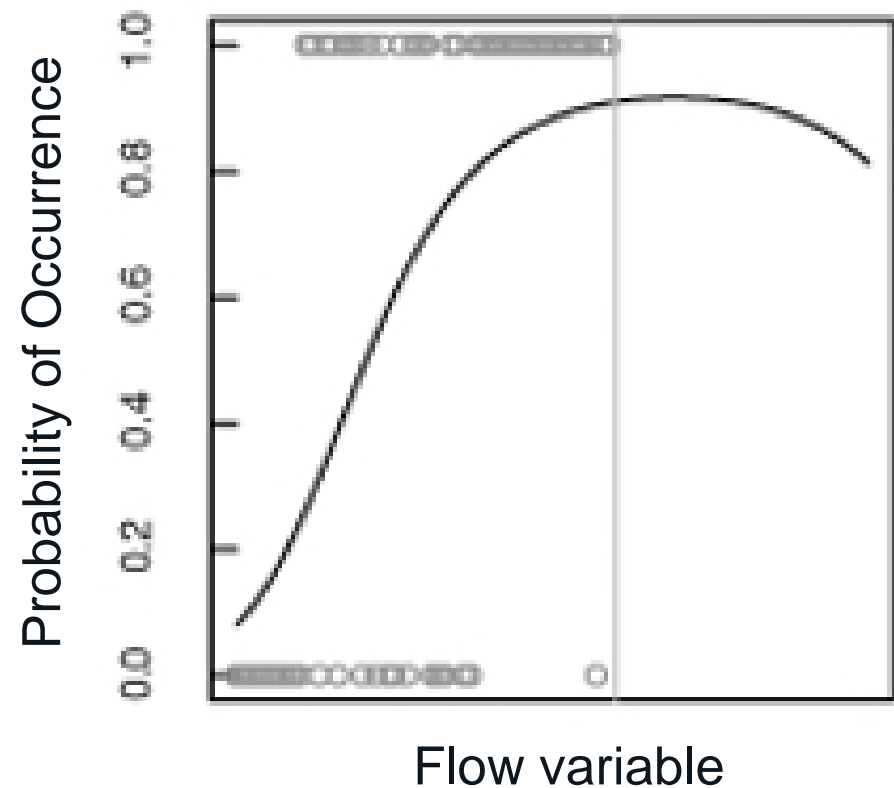
1. Characterize aquatic life and recreational uses in the LA River
2. Quantify flows needed to support uses
3. Model how various flow scenarios would affect uses
4. Develop a set of flow recommendations that optimize use support
5. Incorporate stakeholder input throughout the project
6. Serve as a model for similar situations

Funding Partners

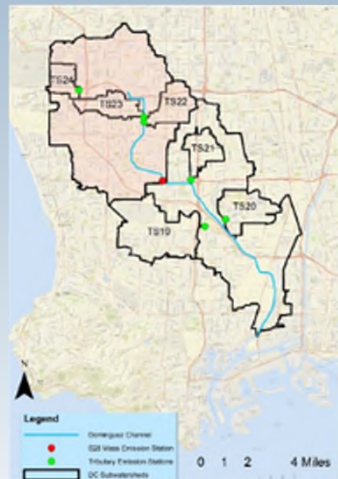
- State Water Resources Control Board
- LA Regional Water Quality Control Board
- City of LA Department of Water and Power
- City of LA Bureau of Sanitation
- LA County Sanitation Districts
- LA County Flood Control District
- Potential new partners

What We Want

- Which species?
- Which habitats?
- What seasons?
- What scenarios?
- What management?



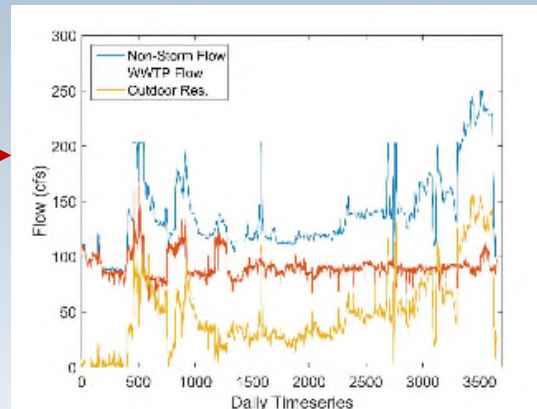
Overall Process for Developing Flow Criteria



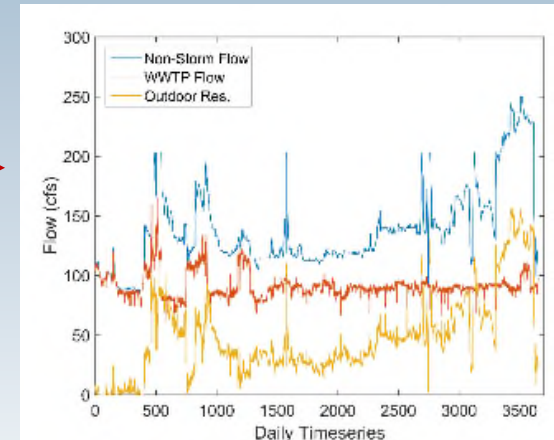
Models

Scenario	Description
1	WRP
2	WRP + stormwater
3	WRP + conservation
4	WRP + stormwater + conservation

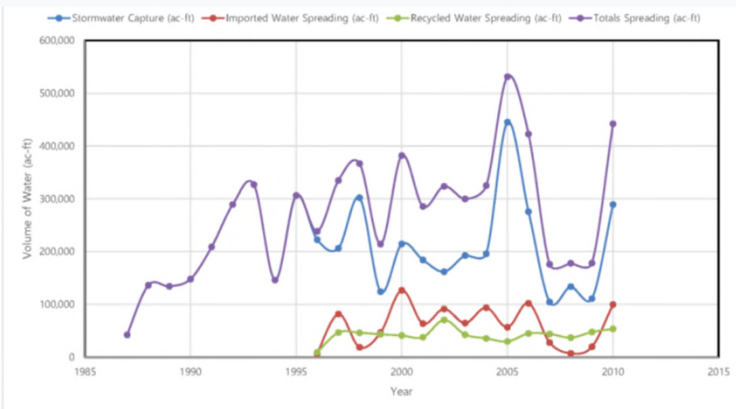
Scenarios



Time series output



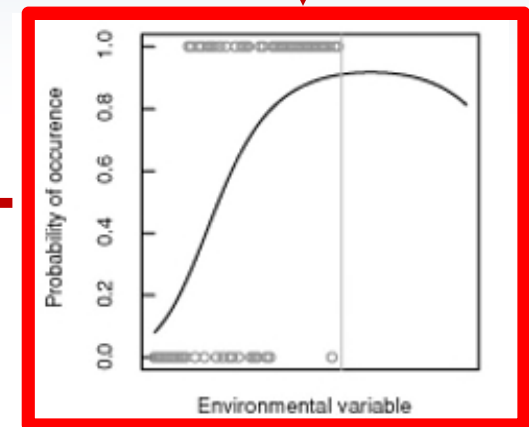
E-flow metrics



Mitigation measures

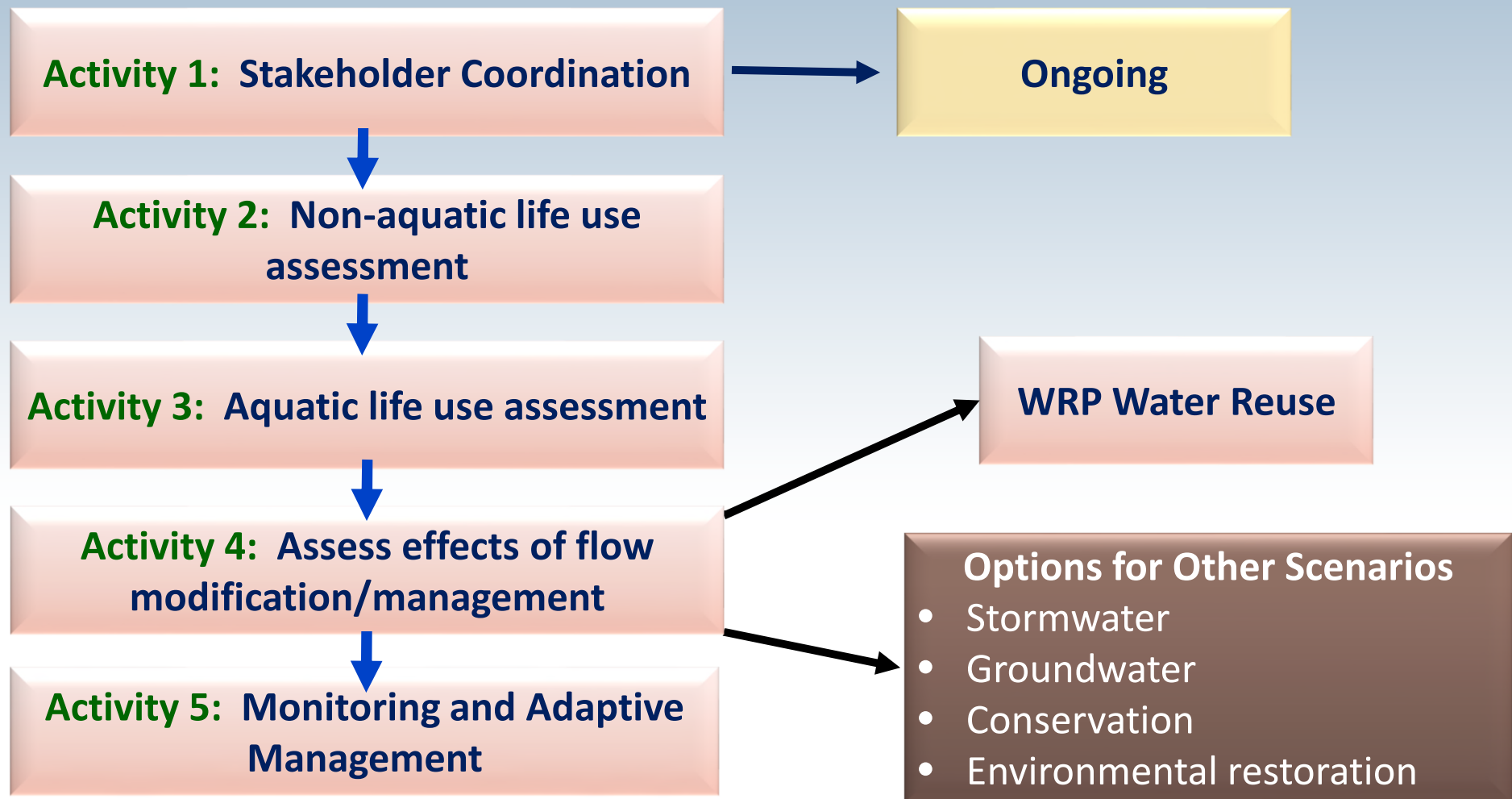
- **Flow Criteria**
✓ by reach and season
- **Management/mitigation recommendations**

Agreed upon criteria



Flow-ecology relationships

Assessing Environmental Flows for LAR



Activity 2 – Assessing Non-aquatic Life Uses

Goal: Identify key non-aquatic life uses and determine hydrologic needs for those uses

- Survey existing reports
- Interview key individuals
- Produce list of uses by reach
- Establish flow needs for each use
 - Past reports
 - Interviews/BPJ

Hydrologic

- Minimum annual flow
- Duration of consecutive minimum annual flow
- Frequency of high winter flows Oct-March
- Frequency of Spring flush flows March-June
- Date of latest flood during the winter
- Decrease in flow per day in Spring following last Winter flood
- Magnitude of summer base flow

Hydraulic

- Presence of riffle (moderate depth current, coarse habitat in Spring spawning)
- Percent of hat edgewater, riffle in the Spring a
- Minimum and bottom velocity Spring and summer
- Minimum depth Spring, Summer

RECREATIONAL USE REASSESSMENT (RECUR)
OF THE ENGINEERED CHANNELS OF THE
LOS ANGELES RIVER WATERSHED



Not Just Minimum Flows

EXTENT OF FISHING AND FISH CONSUMPTION BY FISHERS IN VENTURA AND LOS ANGELES COUNTY WATERSHEDS IN 2005

*M. James Allen
Erica T. Jarvis
Valerie Raco-Rands
Greg Lyon
Jesus A. Reyes
Dawn M. Petschauer*



Southern California Coastal Water
Technical Report 574 - September 2008



Research Project

Activity 2 – Assessing Non-aquatic Life Uses

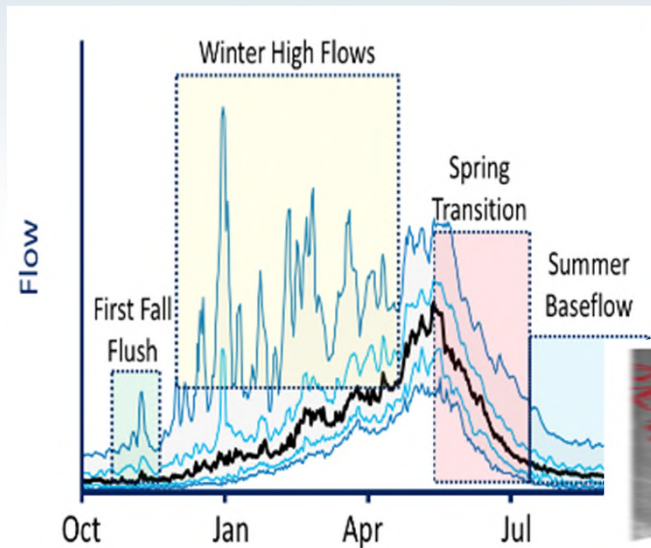
Potential Product/Outcome

Reach	Uses	Flow Needs
1	a. Fishing b. Bird watching	a. Depth and flow during all seasons b. Minimum depth to provide foraging area during non-storm periods
2	a. Community education b. Recreation/kayaking	a. No substantive flow restrictions b. Min flow and depth during spring and summer
3	a. Fishing b. Recreation/wading	a. Depth and extent of inundation during spring and summer b. Min flow and velocity during spring and summer
4	TBD	
5	TBD	
6	TBD	

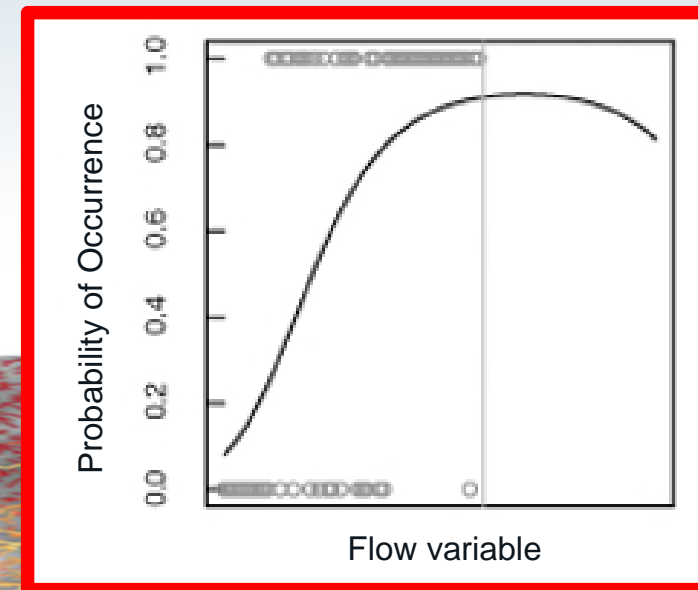
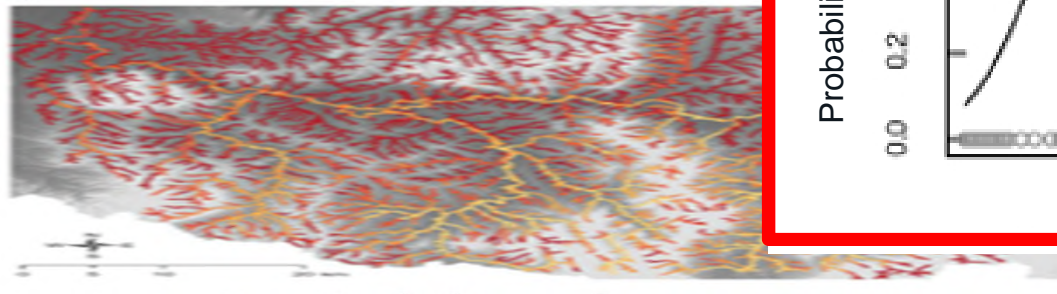
- Flow, depth and velocity needs to be quantified to the extent possible
- Season considerations to be included

Activity 3 – Aquatic Life Use Assessment:

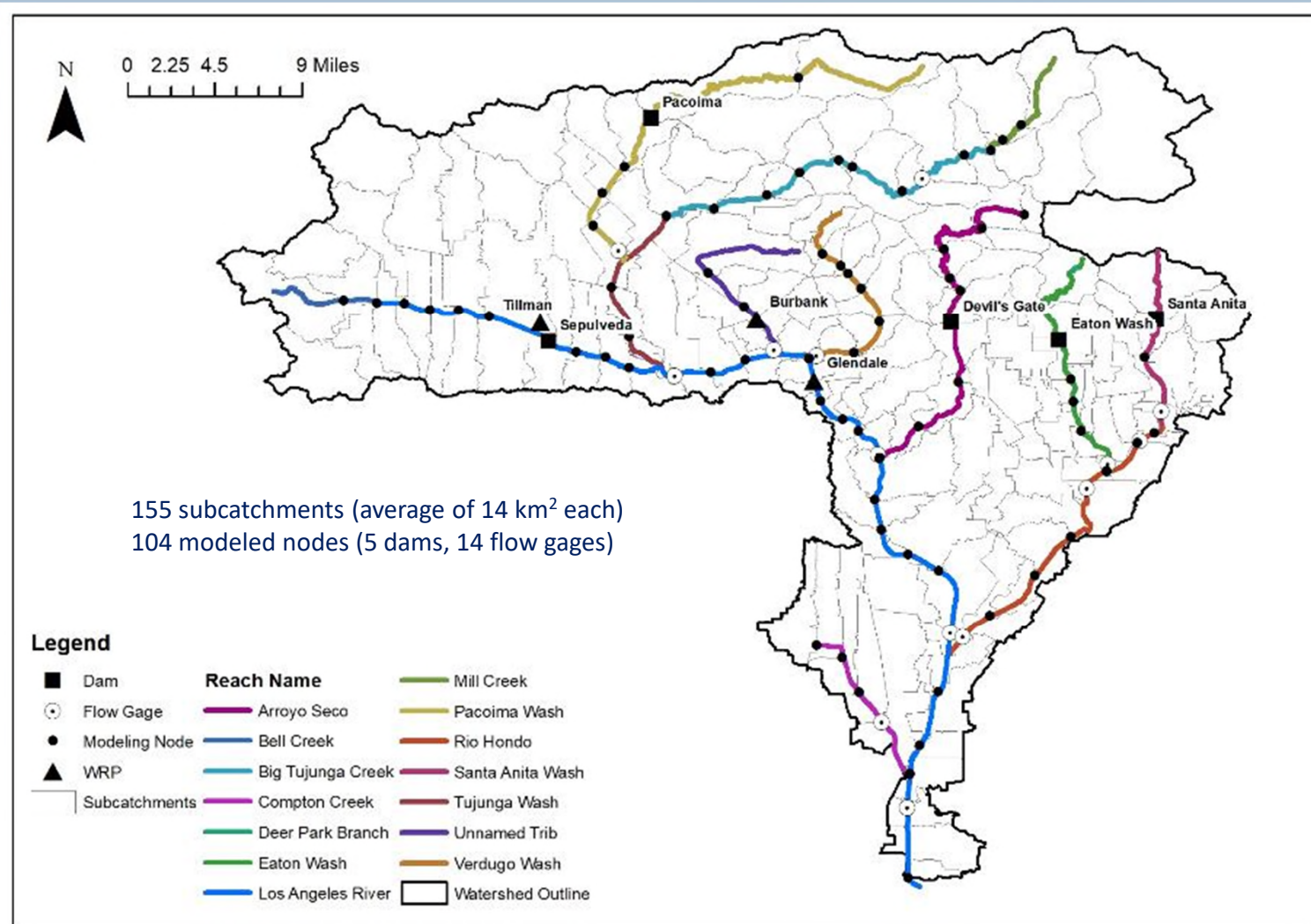
- Choose focal species
- Use existing databases on life history needs
- Augment with additional analysis as needed
- Model relationships between flow needs and probability of occurrence



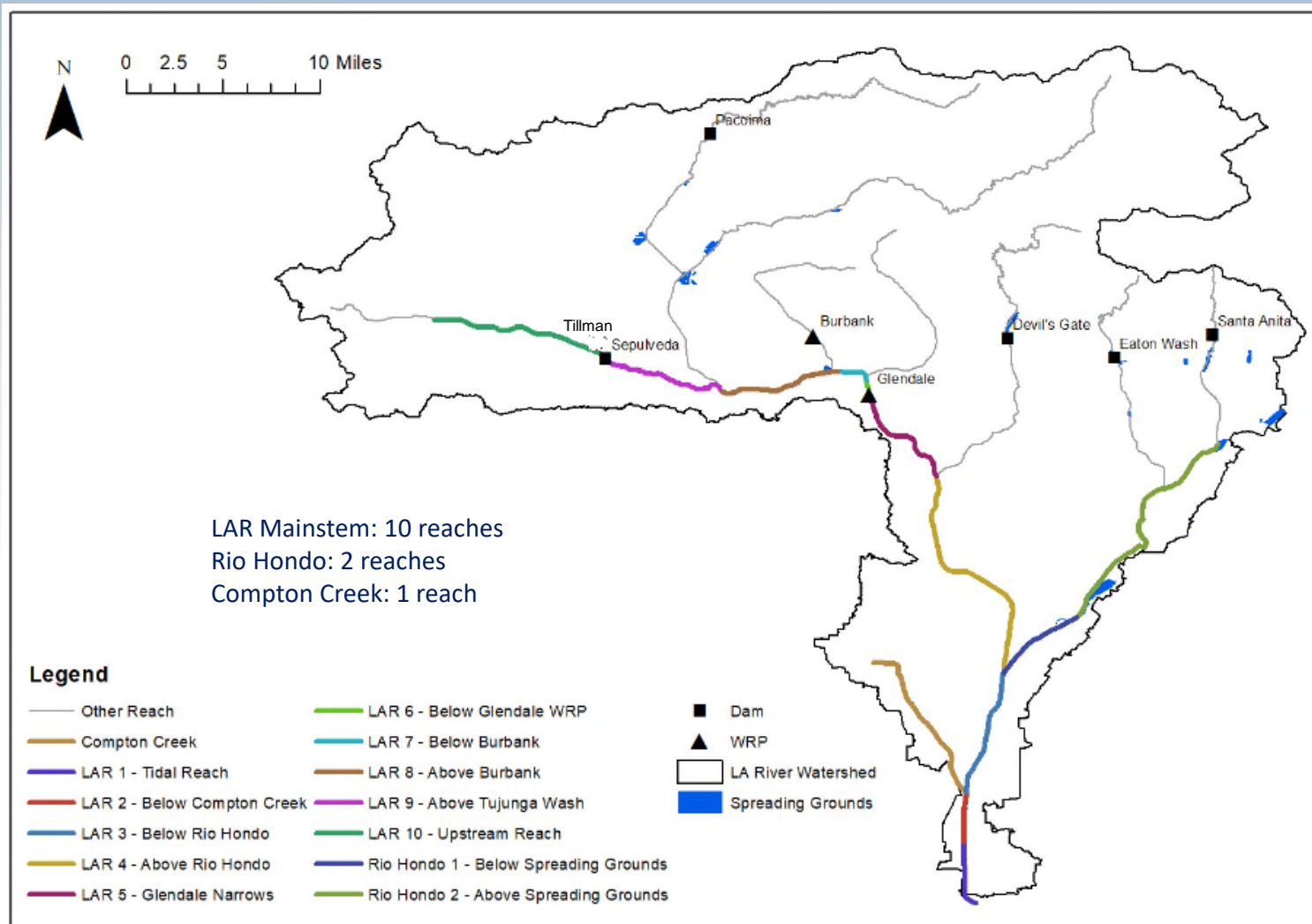
Life History	Requirements
Spawning	<ul style="list-style-type: none"> • Feb-Aug (June-July mostly) • Quiet edge waters or pool • 14-22°C
Fry	<ul style="list-style-type: none"> • Quiet edge waters with no significant flow • Aquatic vegetation
Juvenile	<ul style="list-style-type: none"> • Quiet edge waters • Aquatic vegetation • 0.5% - 2.5% gradient
Adult	<ul style="list-style-type: none"> • 10-24°C • Slow moving streams or backwaters/pooling sections • Sand, gravel, cobble, boulder • Adapted to fast (3 km/h) streams • Depth 40 cm • 0.5% - 2.5% gradient, <2% in upper San Gabriel • Pools and gorges • Emergent vegetation



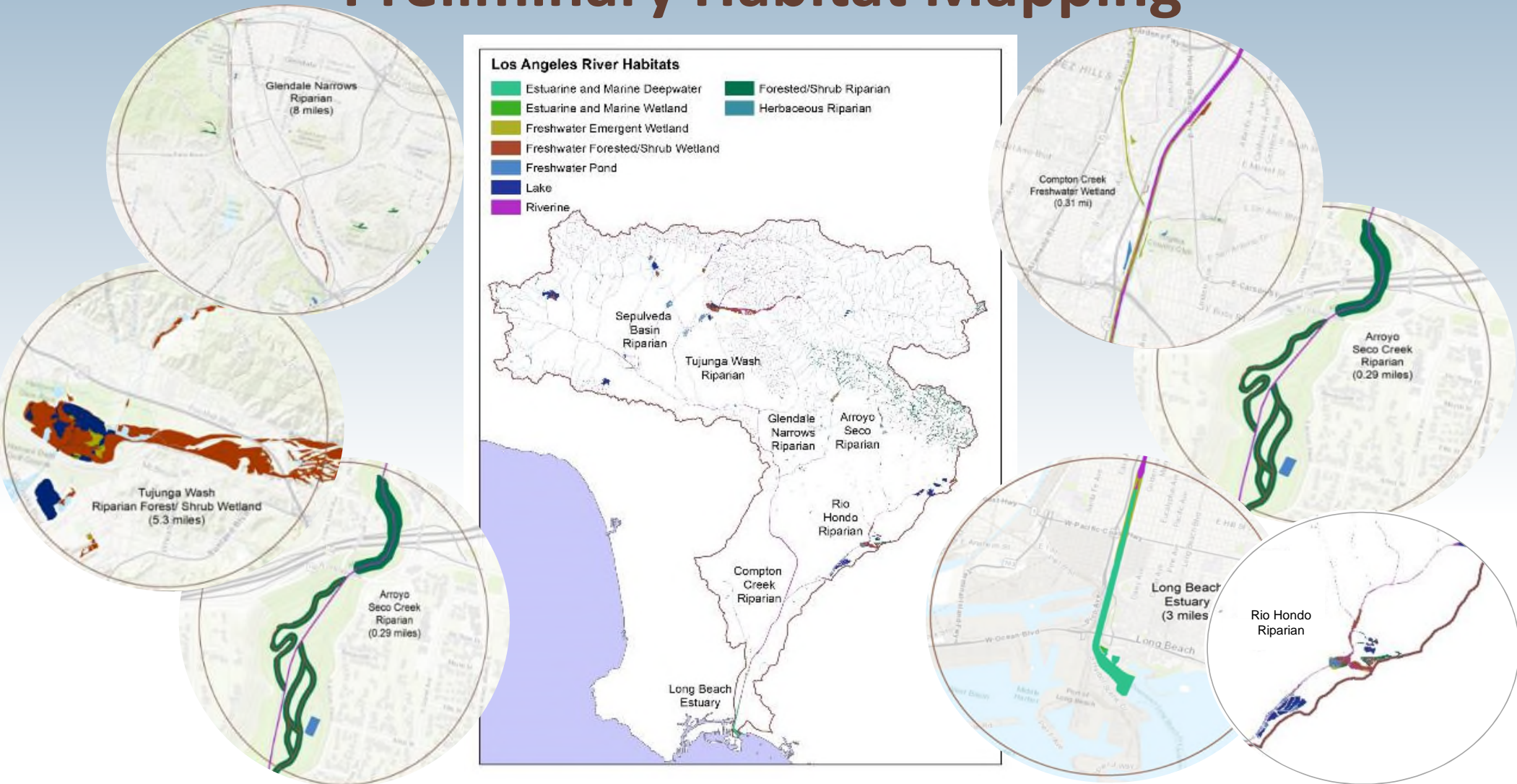
Proposed Model Domain



Proposed Analysis Reaches



Preliminary Habitat Mapping



Potential Focal Species

- Arroyo chub
- Santa Ana sucker
- Southern steelhead
- Tri-colored blackbird
- Least bells' vireo
- Belted kingfisher
- Black crowned night heron
- Black necked stilt
- Long-billed dowitcher
- **Other suggestions**



Activity 3 – Aquatic Life Use Assessment:

Potential Product of Flow Ecology Assessment

Goal: Develop flow-ecology relationships for key aquatic species or habitats in the LA River

Endpoint	Reaches	Flow Needs			
		Fall	Winter	Spring	Summer
Great blue heron	1-3		<ul style="list-style-type: none"> Peak flow > X High flow cfs duration between x and y days 		<ul style="list-style-type: none"> Depth of water between x and y meters
Riparian habitat/vireo	3-5		<ul style="list-style-type: none"> Peak flows > X at least every Y years Sustained high flow > x days 	<ul style="list-style-type: none"> Recession rates over 3 weeks to promote seed establishment 	<ul style="list-style-type: none"> Baseflow duration of 3 weeks
SW pond turtle	2, 4, 6	<ul style="list-style-type: none"> Flushing flows > X days and Y cfs 			<ul style="list-style-type: none"> Baseflow > x cfs Baseflow duration through Aug
Benthic Invertebrates	2-6		<ul style="list-style-type: none"> Frequency of high flow events > x Peak flows between x and y 	<ul style="list-style-type: none"> Recession rates through June No scouring flows after X date 	<ul style="list-style-type: none"> Flow > ponding through Aug

Potential Expansions of Project Scope

- Restoration and recreation opportunities along Rio Hondo, Compton Creeks, and possibly other locations
- Model potential water quality effects
 - Temperature
 - Sediment/TSS
 - Specific conductance
 - Metals
 - CECs (optional)

Activity 4 – Quantify Effects of Flow Management

Analyzing Scenarios



Proposed Management Scenarios

Tillman Reuse	Burbank Reuse	Glendale Reuse	Stormwater Capture	Restoration
0% recycle	0% recycle (6.9 cfs)	0% recycle (12.5 cfs)	Centralized capture (locations?)	Rio Hondo
20% recycle	20% recycle	20% recycle	On-site infiltration	Compton Creek
40% recycle	40% recycle	40% recycle	On-site direct use	Tujunga
60% recycle	60% recycle	60% recycle	Green streets	Arroyo Seco
80% recycle	80% recycle	80% recycle	Subregional infiltration	Glendale Narrows
100% recycle	100% recycle	100% recycle	Subregional direct use	OTHER LOCATIONS?

- Proposed in change petition is 60% reduction for Burbank and 65% reduction for Glendale in August
- Stormwater capture scenarios from Stormwater Capture Master Plan
- Can assess combinations of scenarios

Activity 5 – Monitoring and Adaptive Management

Goal: Develop a recommended monitoring strategy with potential triggers for adaptive management

- **Approach:** work with stakeholders and technical team to develop monitoring strategies
 - Leverage existing monitoring and assessment programs (e.g. SMC)
 - Provide data to improve model performance
 - Evaluate efficacy of criteria and management actions

Schedule

Activity / Sub-Tasks	2018 Q4	2019 Q1	2019 Q2	2019 Q3	2019 Q4	2020 Q1	2020 Q2	2020 Q3	2020 Q4
Activity 1 - Stakeholder coordination									
Activity 2 - Non-aquatic Life Use Assessment									
Activity 3 - Aquatic Life Beneficial Use Assessment									
Activity 4 - Apply Environmental Flows/Evaluate Scenarios									
Activity 5 - Monitoring and Adaptive Mangement Plan									
Activity 6 - Summary of results/reporting									



Stakeholder Coordination Meetings



Technical Advisory Committee Meetings

Technical Advisory Committee

- CA Dept. of Fish and Wildlife
- City of Glendale
- Corps of Engineers
- ESA Consultants
- Heal the Bay
- LA County Dept. of Public Works
- LA County Dept. of Regional Planning
- LA Dept. of Water and Power
- LA Regional Water Board
- Long Beach Water
- RCD Santa Monica Mountains
- State Water Resources Control Board
 - SGMA and Instream Flows
- Stillwater
- UC Extension
- UCLA
- UCSB
- ULARA Watermaster
- US Forest Service
- US Bureau of Reclamation
- US Fish and Wildlife Service

Questions

Kris Taniguchi-Quan
kristinetq@sccwrp.org

Eric Stein
erics@sccwrp.org

Steve Weisberg
stevew@sccwrp.org

www.sccwrp.org



Item 11. Member Comments on Items Not on the Agenda





Item 12. Announcement of Future Meetings and Adjournment



Revitalization Plan Upcoming Events

Working Group		Water & Environment and People & Recreation Committees	
May 23, 2019		April 25, 2019	
July 25, 2019		June 28, 2019	
September 26, 2019		August, 2019 (Draft plan review, no meeting)	
Community Engagement and Outreach*			
Round 1		April 4 th , Kidspace Museum, Pasadena	
		April 9 th , Rose Goldwater Community Center, Canoga Park	
Round 2 (April - May)		Proposed Projects and Conceptual Plans	
Round 3 (June – July)		Draft Plan	

*Dates subject to change



Contact Information

Santa Monica Mountains Conservancy, Board Secretary

- Tel. No. (310) 589-3200, Extension 118
- Email: river@smmc.ca.gov

Mountains Recreation and Conservation Authority

Sarah Rascon, Urban River Program Officer

- Email: sarah.rascon@mrca.ca.gov
- Tel. No. (323) 221-9944, Extension 109

Melissa Vega, Project Analyst

- Email: melissa.vega@mrca.ca.gov
- Tel. No. (323) 221-9944, Extension 199



AB 466 Upper Los Angeles River and Tributaries Revitalization Plan

Working Group Meeting 4
March 28, 2019

Santa Monica Mountains Conservancy