



# AB 466: Upper Los Angeles River and Tributaries Revitalization Plan Water and Environment Committee

February 28, 2019

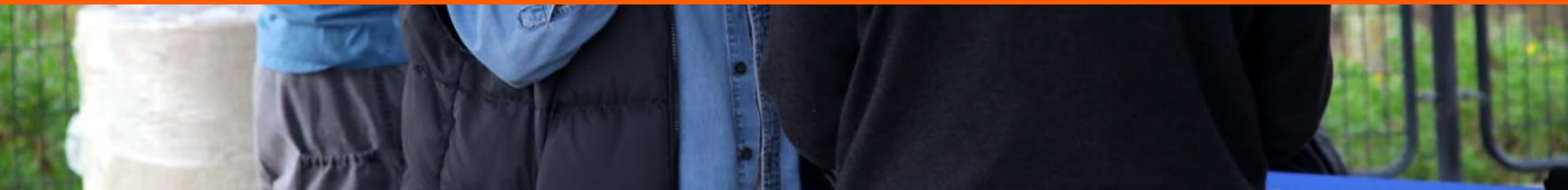
# Meeting Agenda



1. Call to order
2. Roll call
3. Approval of minutes
4. Comments from members of the public on items not on the agenda and public testimony on all agenda items
5. Staff update
6. Data compilation update
7. Discussion of site identification with prioritization planning process
8. Presentation on project gaps analysis
9. Discussion of project criteria development planning process
10. Announcement of future meetings and adjournment



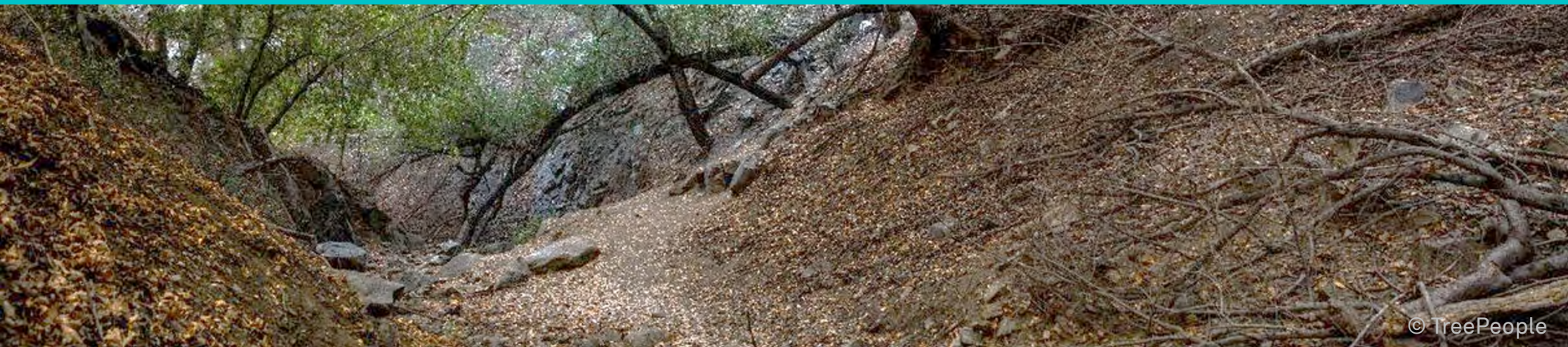
## Item 4. Comments from members of the Public







## Item 5. Staff Update







## Item 6. Data Compilation Update

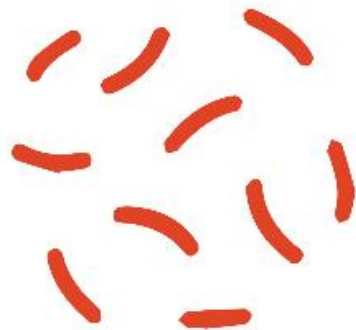


# Data Compiled and Analyzed to Date

---

- + Number of datasets analyzed to date: 45 (and counting)
- + Existing/proposed public transit
- + Existing/proposed active transit
- + Open space
- + Vacant land
- + 100 yr-flood mapping including LOMR
- + Historic registered sites
- + Community assets

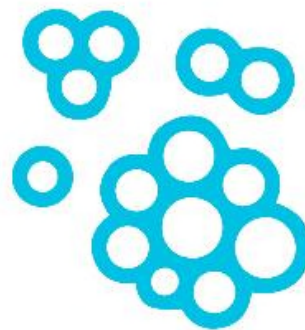




## EXISTING CONDITIONS

---

DISADVANTAGED  
COMMUNITIES,  
PARK NEED,  
DENSITY,  
PERMEABILITY,  
TREE CANOPY



## LAND OPPORTUNITIES

---

VACANT LAND,  
PUBLIC LAND,  
TRANSMISSION CORRIDORS



## PROJECTS

---

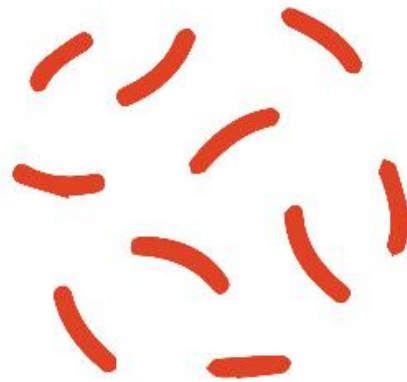
BUILT PROJECTS,  
UNDER-CONSTRUCTION  
PROJECTS,  
PLANNED PROJECTS



## NOTED OPPORTUNITIES

---

WORKING GROUP  
RECOMMENDATIONS



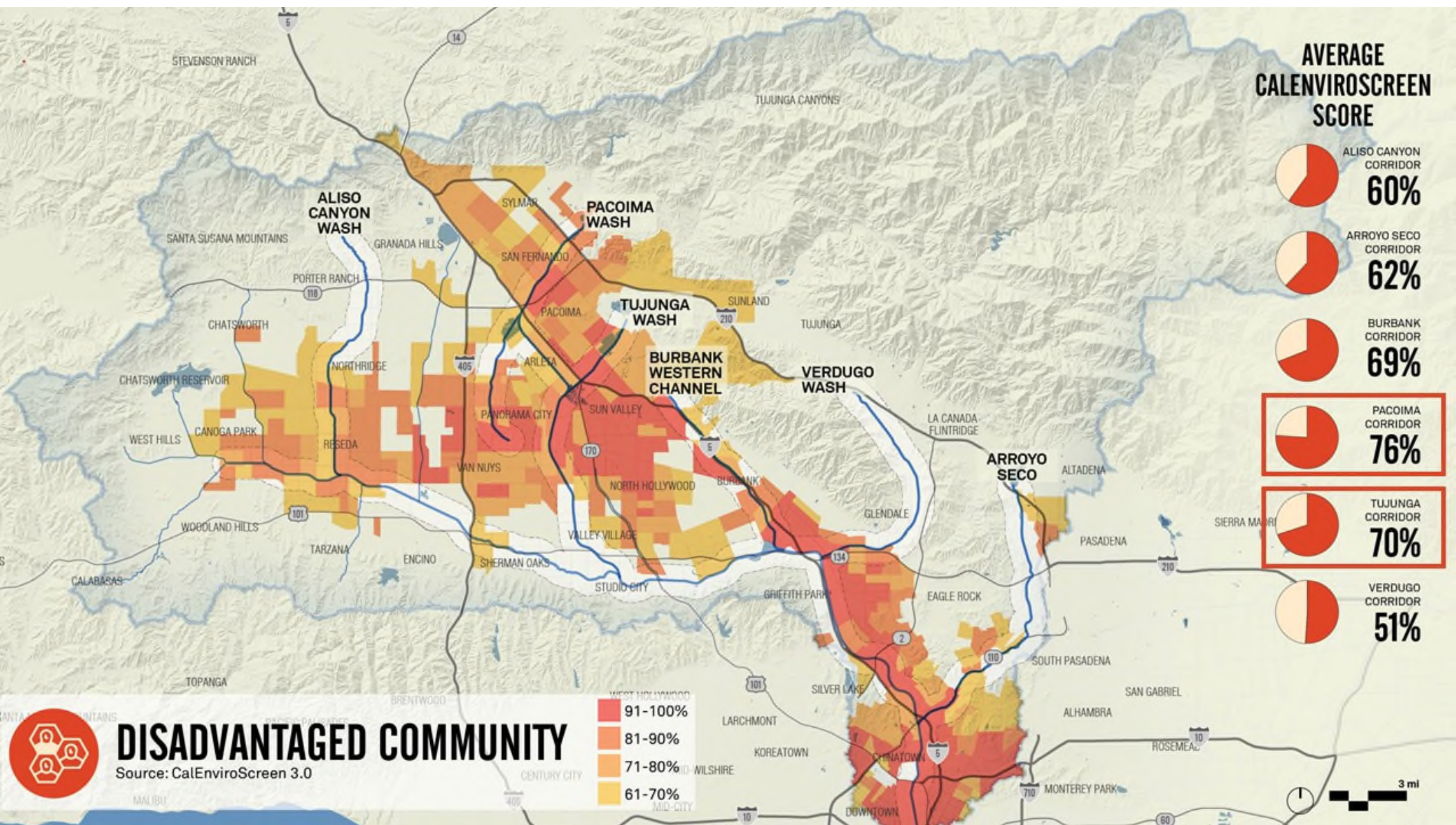
## EXISTING CONDITIONS

---

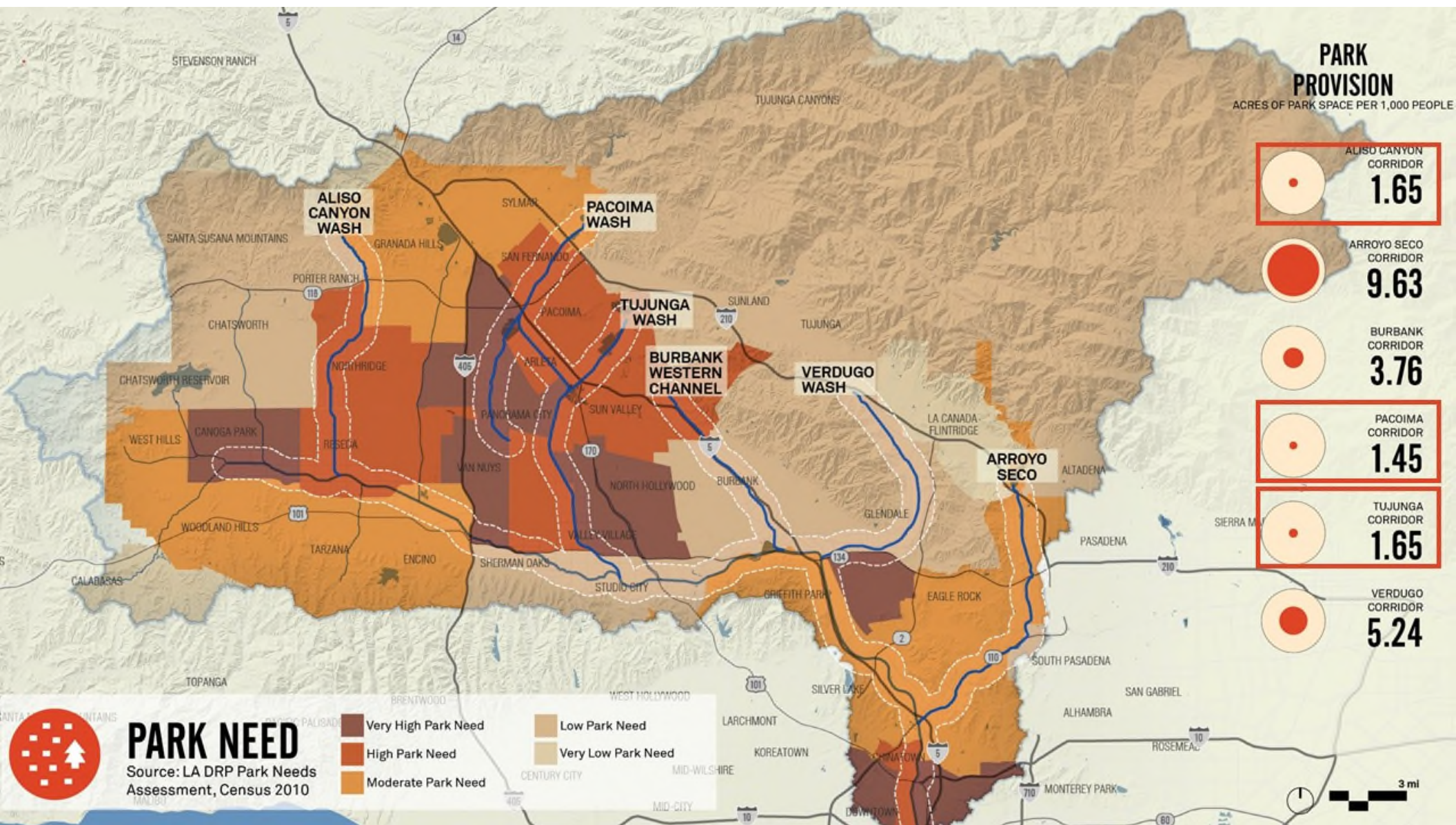
DISADVANTAGED COMMUNITIES, PARK NEED, DENSITY,  
PERMEABILITY, TREE CANOPY



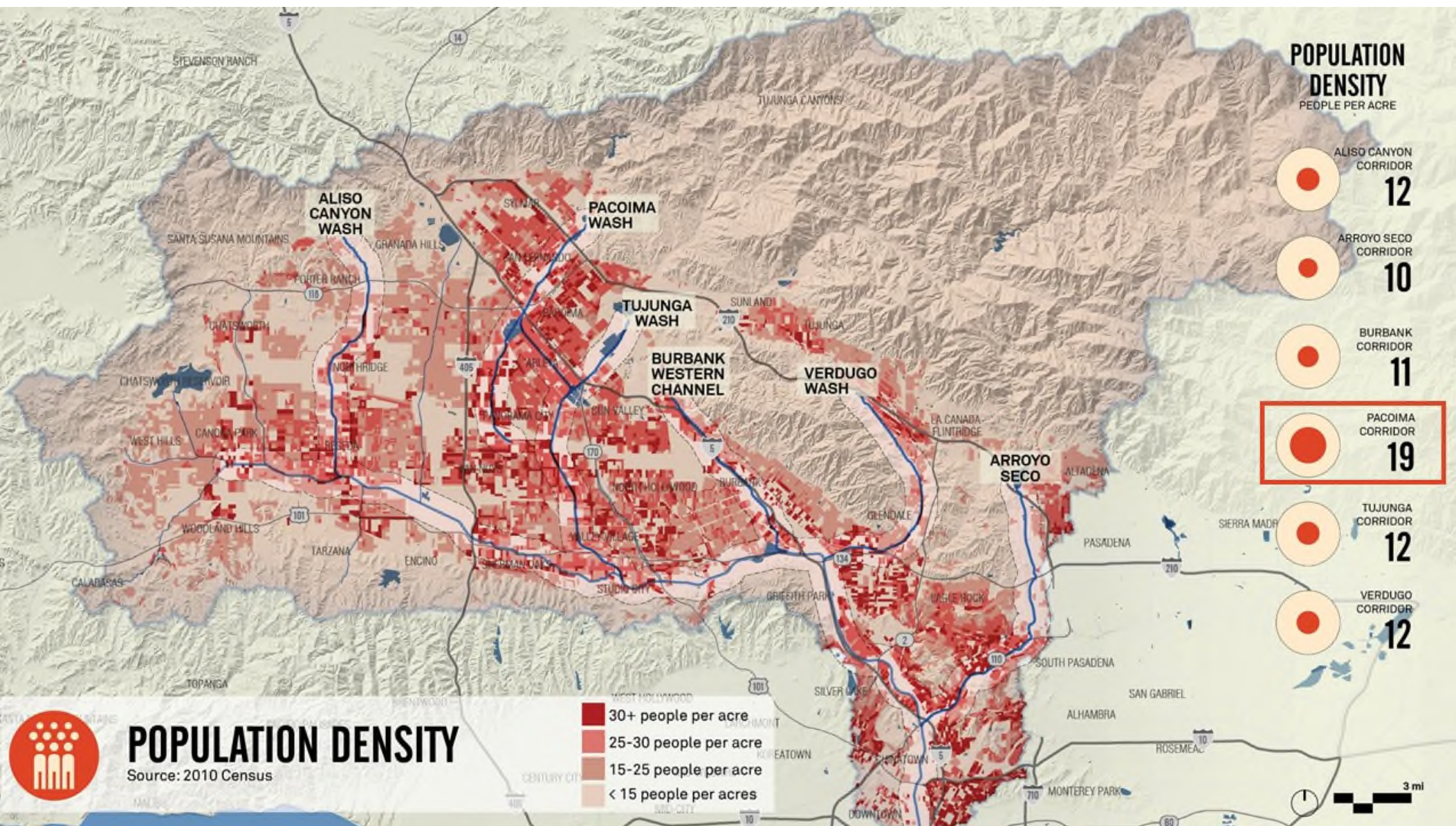




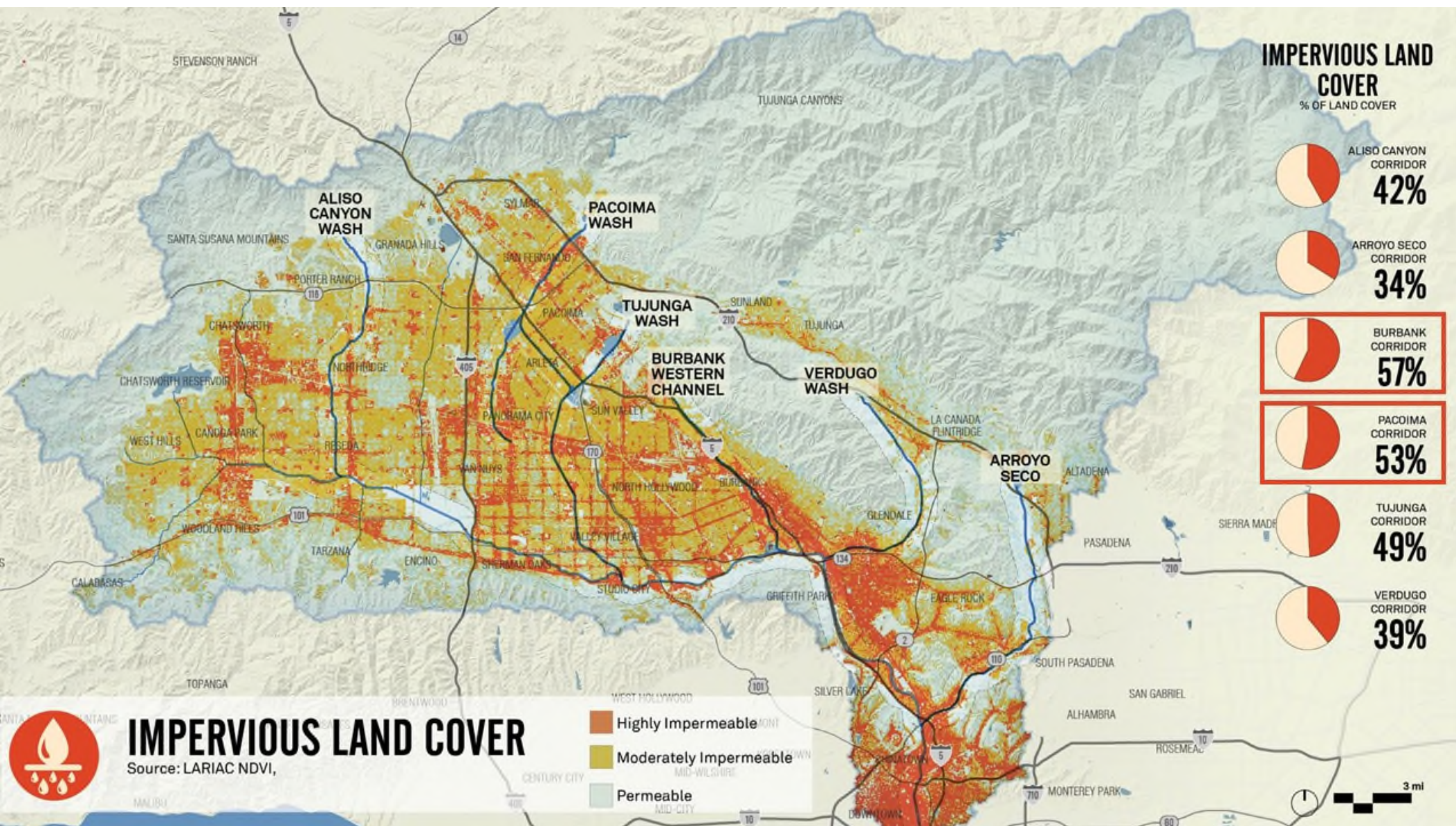




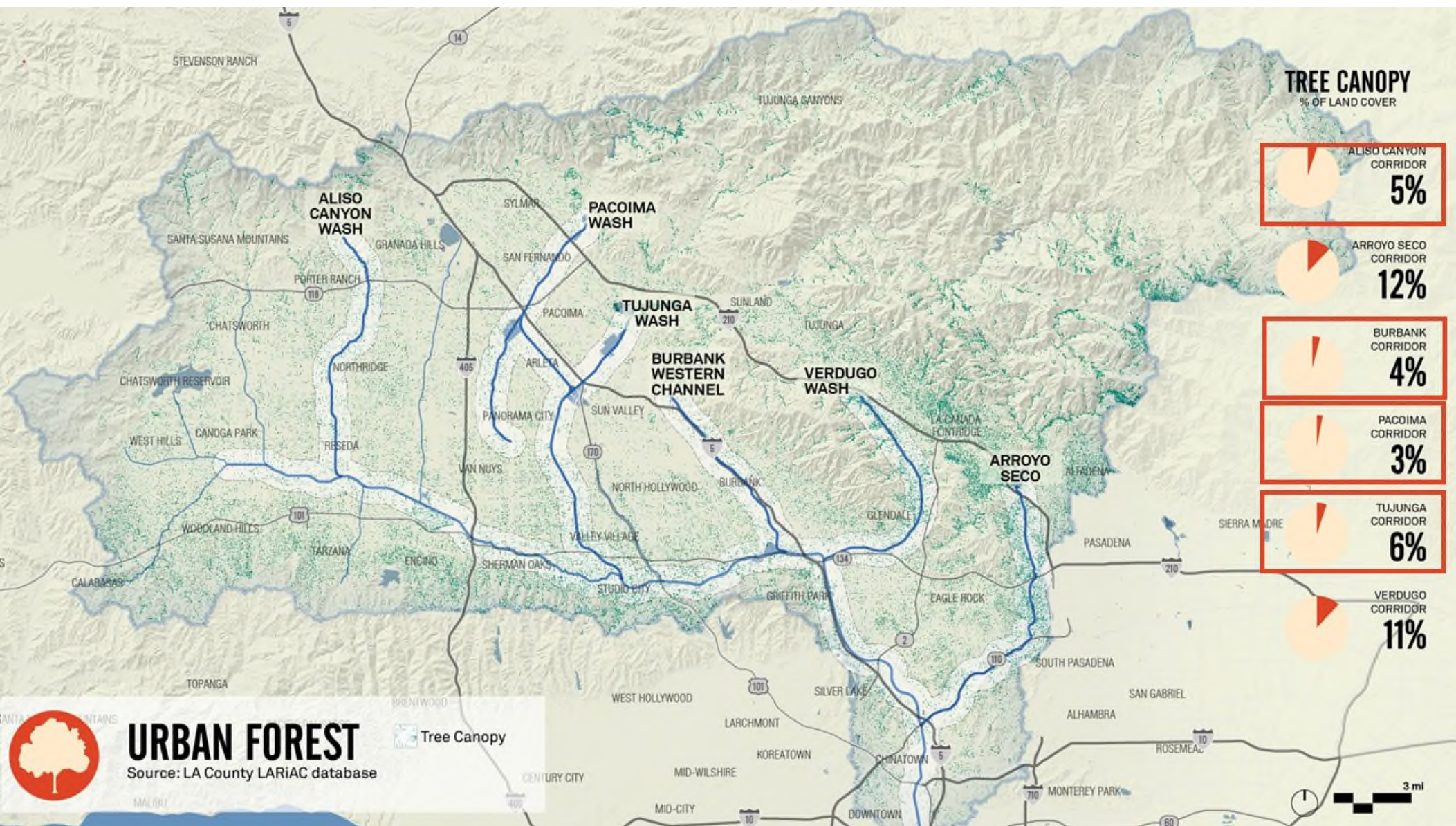


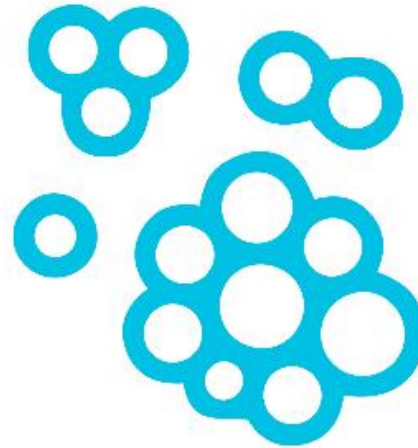












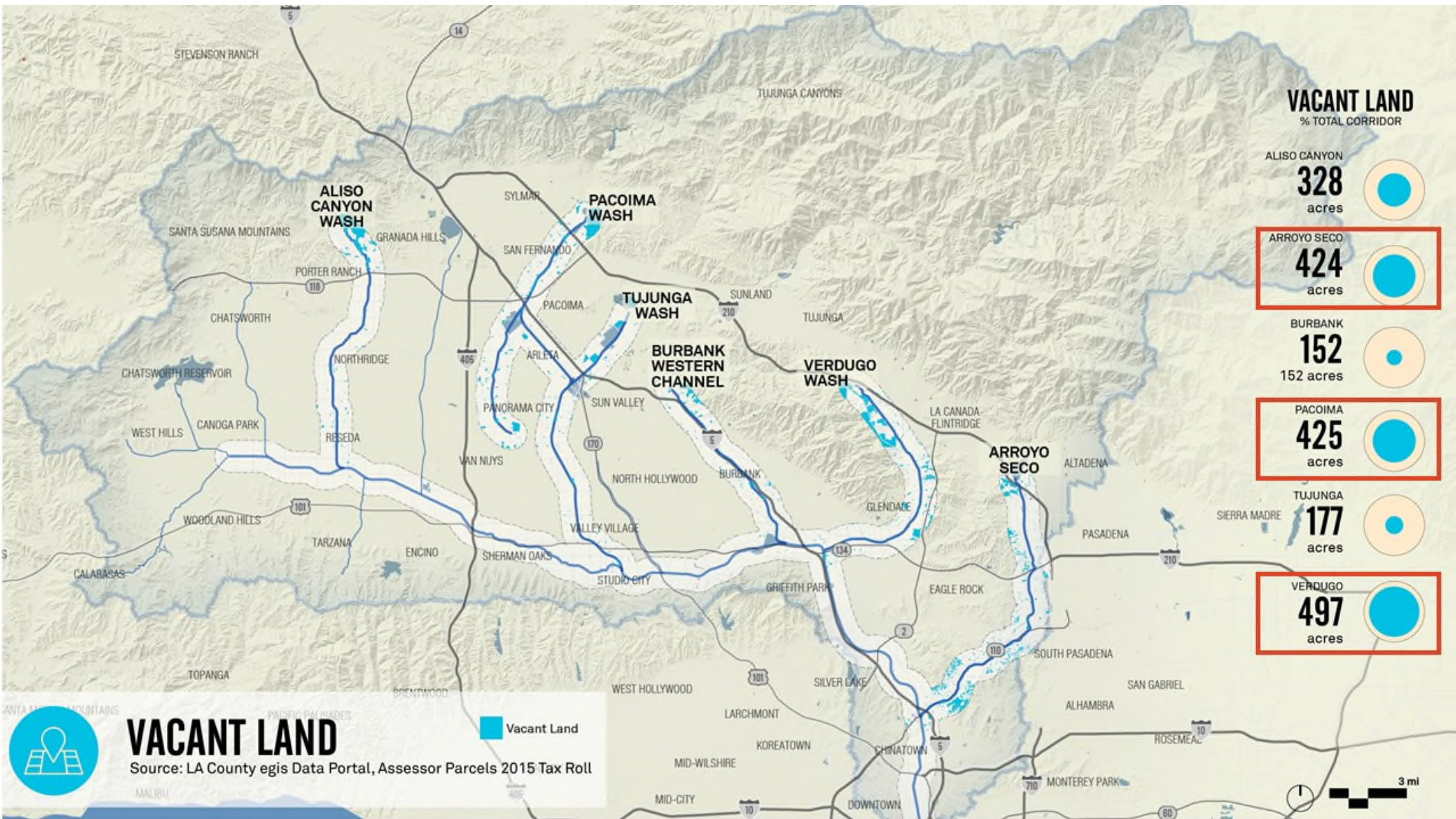
## **LAND OPPORTUNITIES**

---

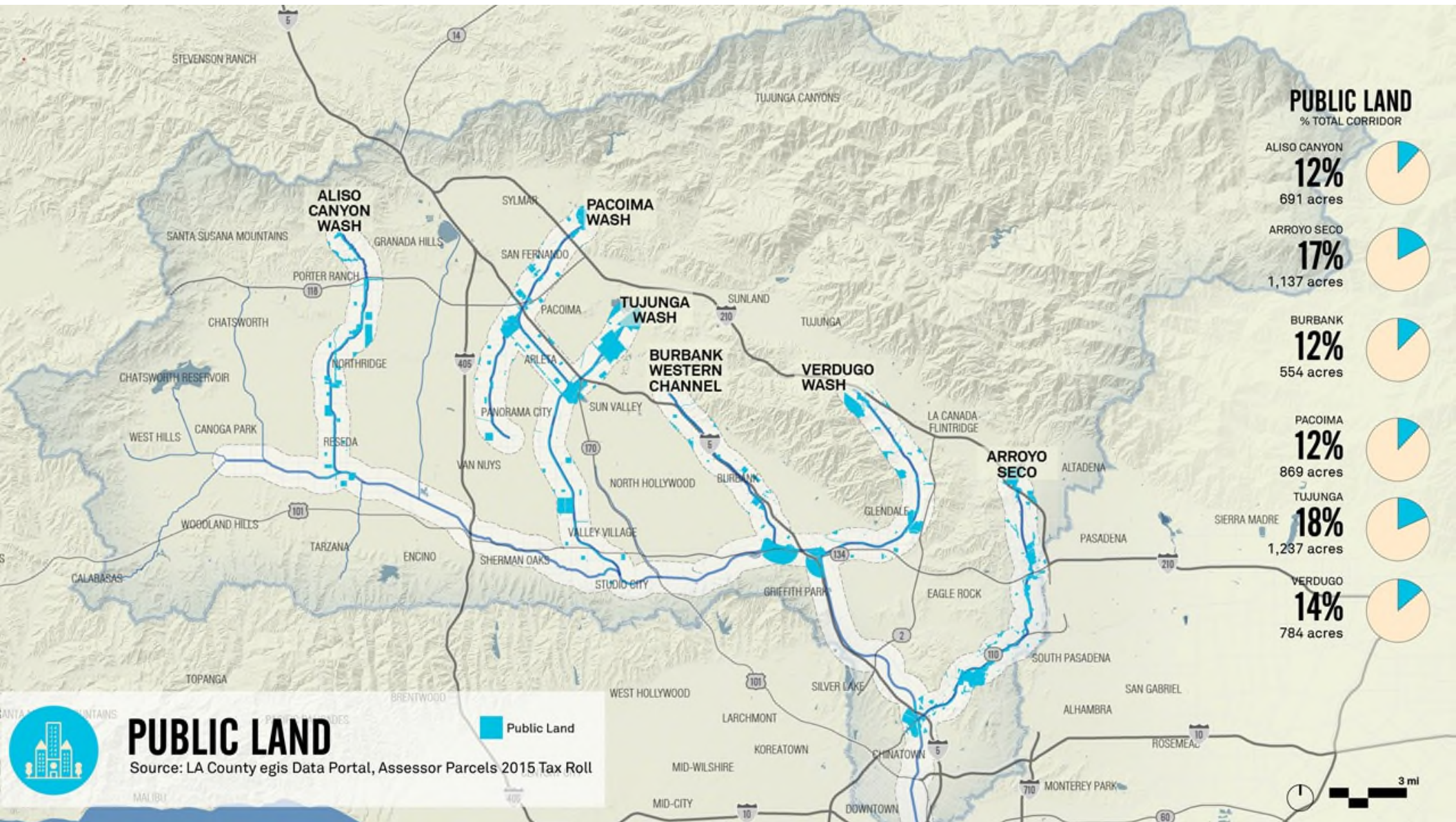
VACANT LAND, PUBLIC LAND, TRANSMISSION CORRIDORS, RIGHT-OF-WAY

















## **PROJECTS**

---

BUILT PROJECTS, UNDER-CONSTRUCTION PROJECTS, PLANNED PROJECTS







## **BUILT**

---

PART OF PREVIOUS  
PLANNING EFFORT

ALREADY CONSTRUCTED



## **UNDER CONSTRUCTION**

---

PART OF PREVIOUS  
PLANNING EFFORT

PARTIAL OR COMPLETE FUNDED

CONSTRUCTION HAS BEGUN



## **PLANNED**

---

PART OF PREVIOUS  
PLANNING EFFORT

NOT FUNDED

WITHIN THE  
ULART WATERSHED

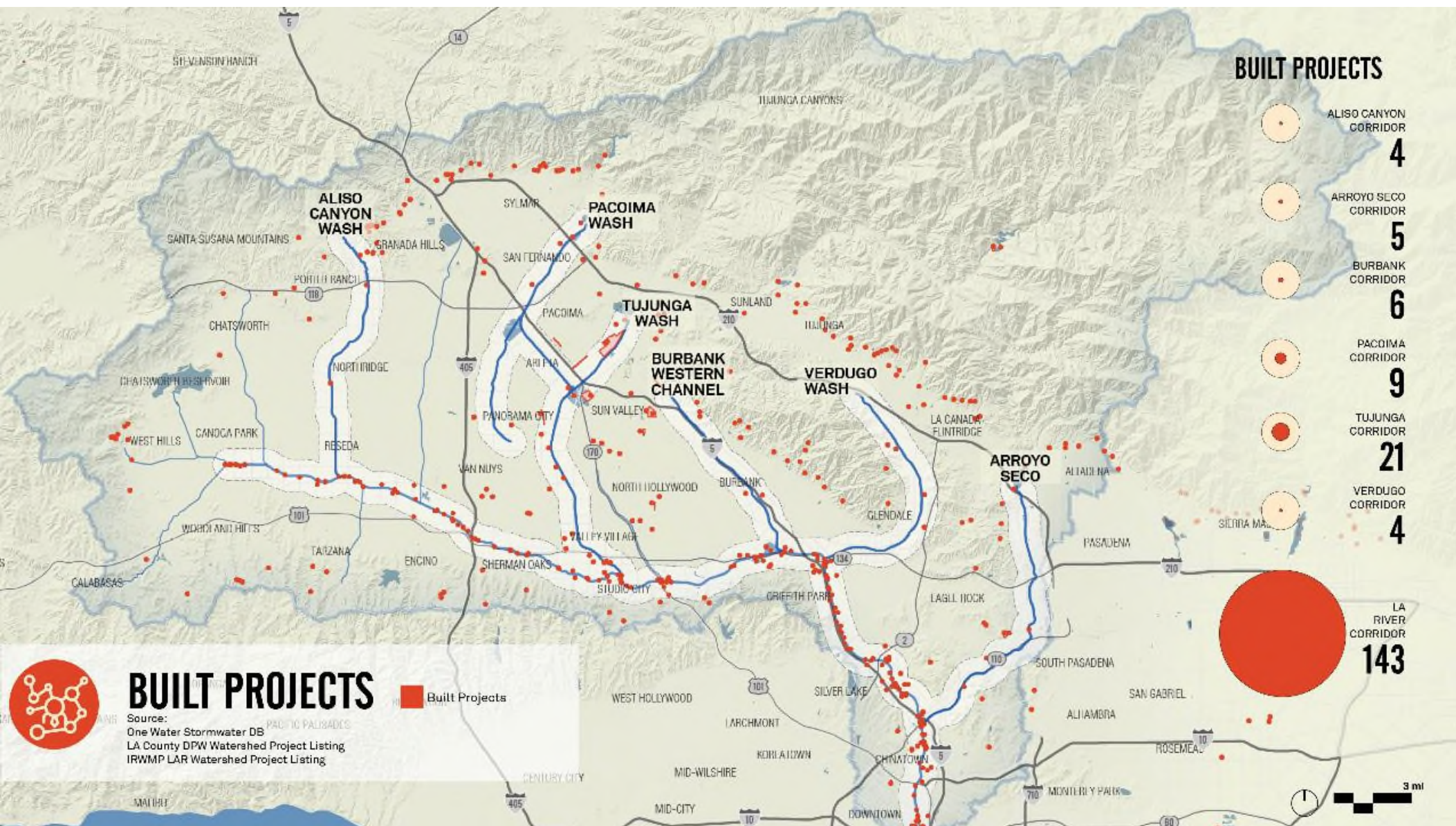


## **LITERATURE REVIEW**

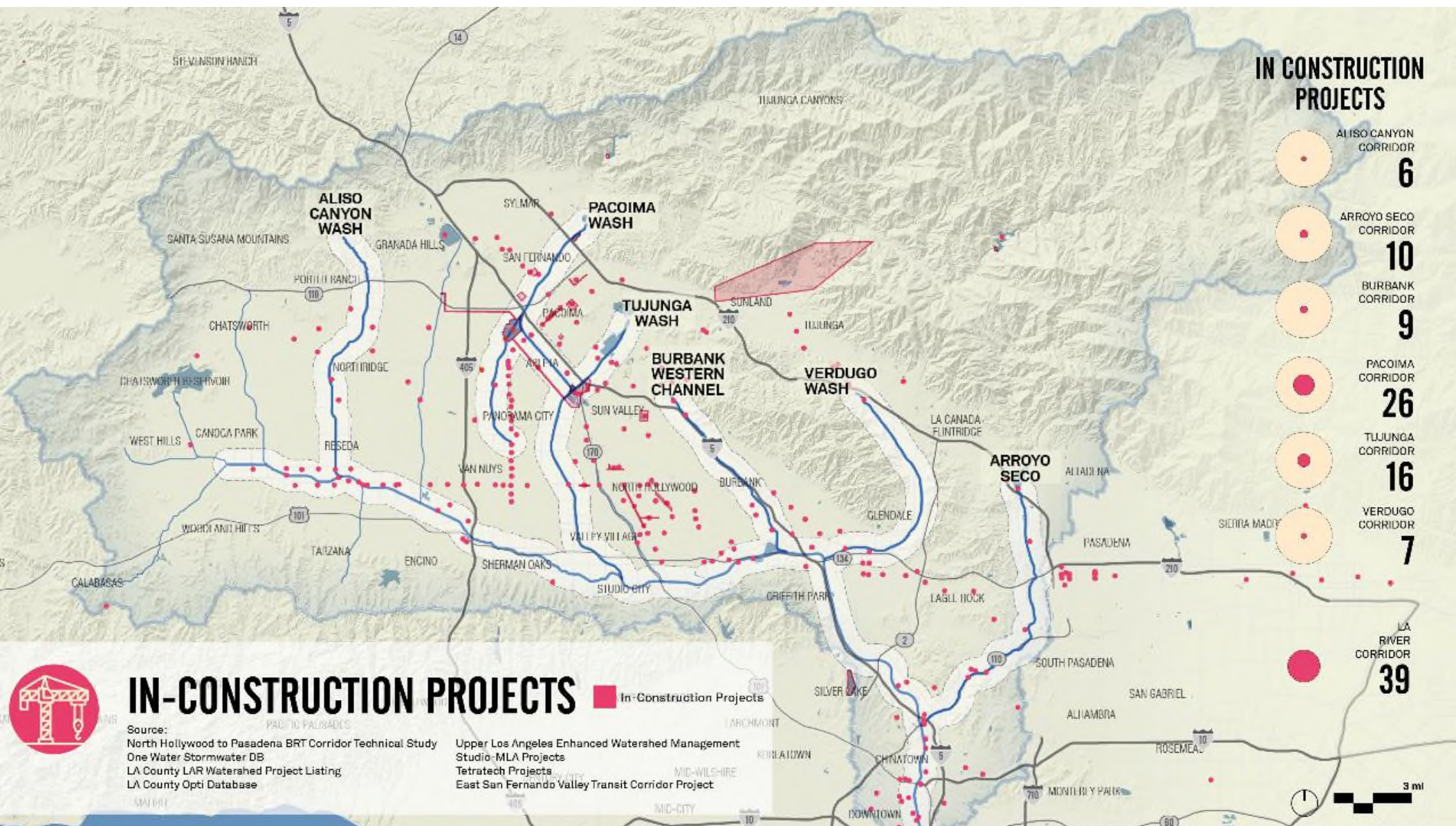
---

PART OF LITERATURE  
REVIEW DOCUMENTS

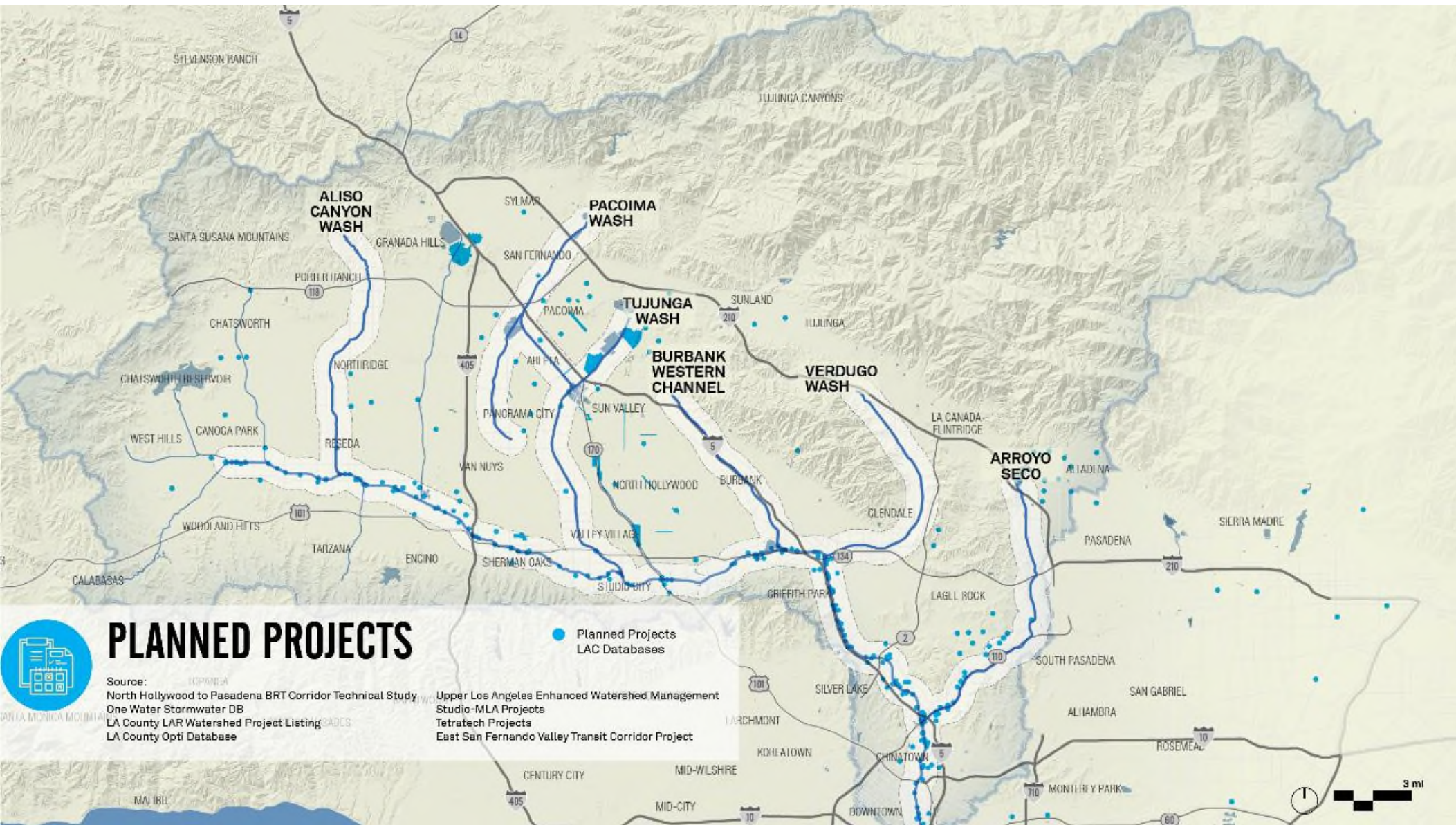
CONSTRUCTION AND  
FUNDING STATUS VARIES



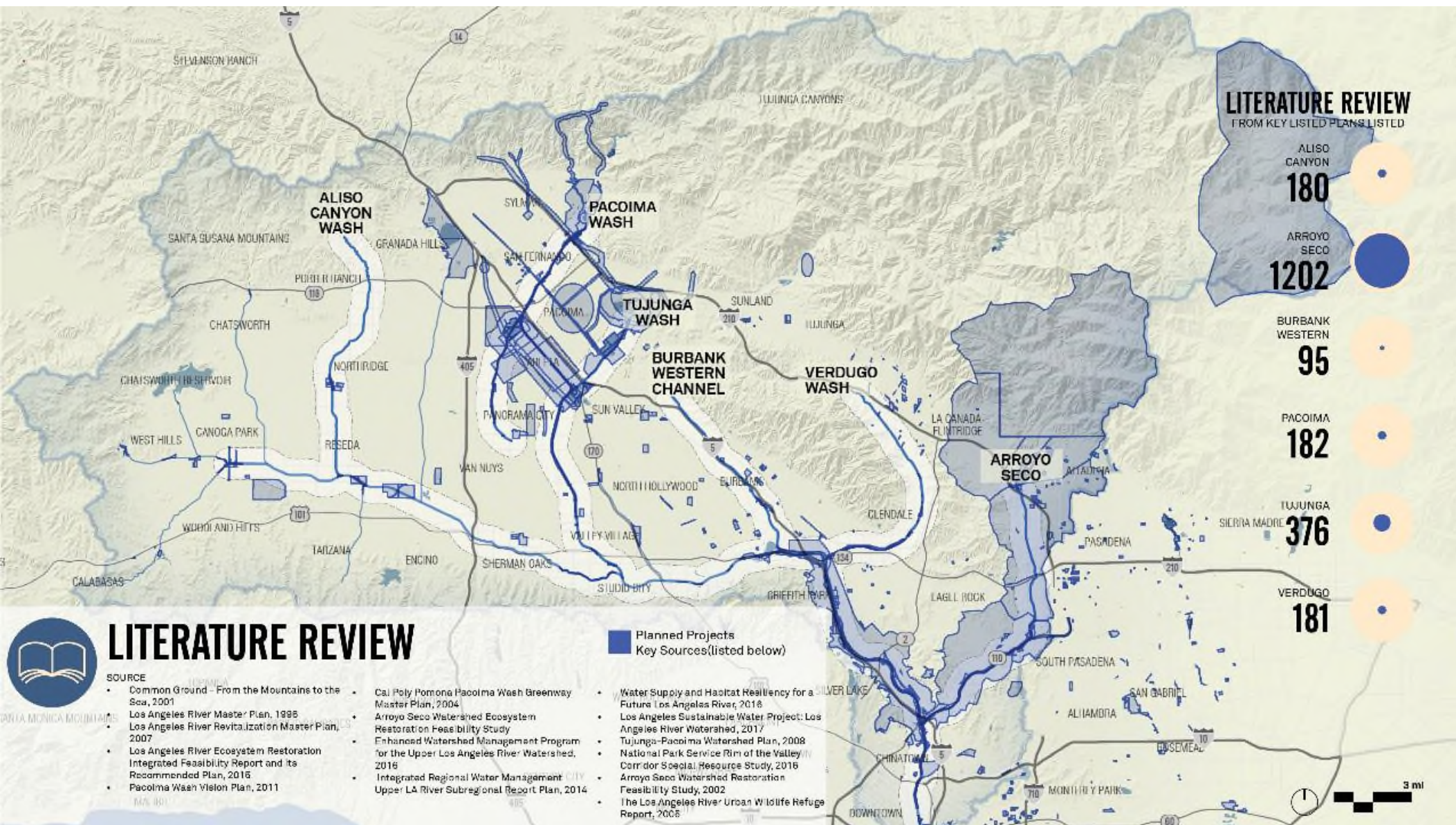












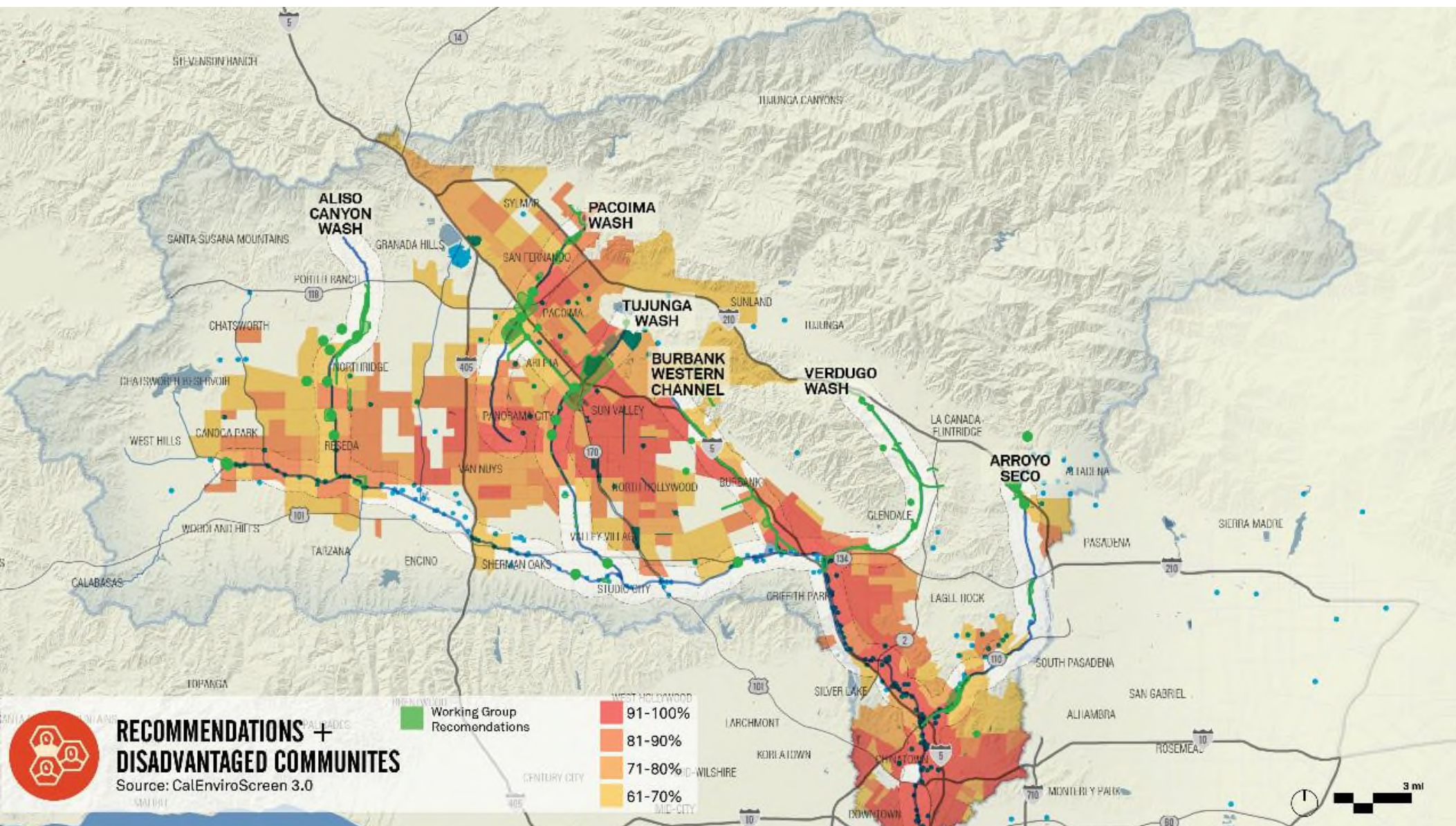


## **NOTED OPPORTUNITIES**

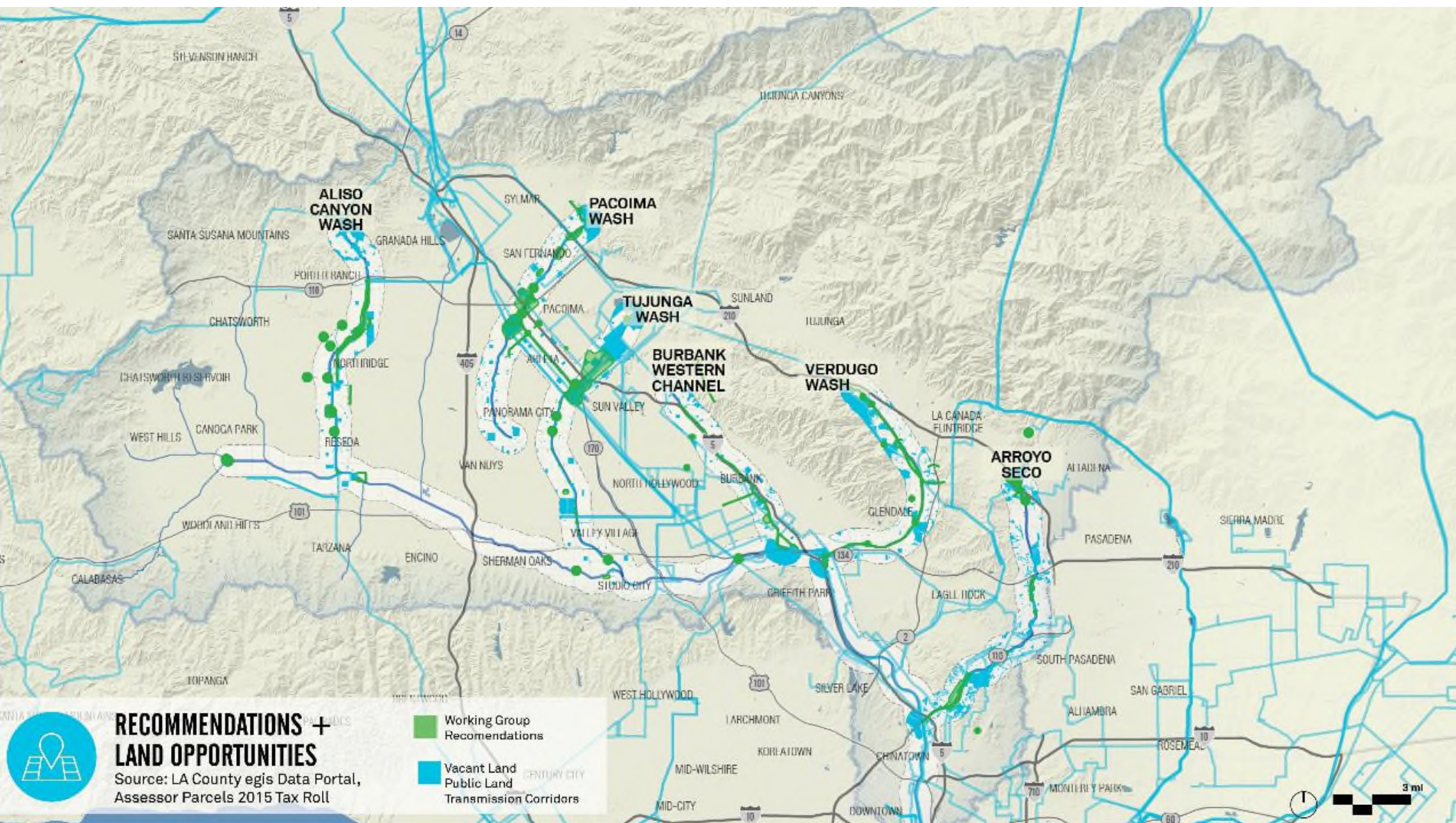
WORKING GROUP RECOMMENDATIONS



















## Item 7. Presentation on Project Gaps Analysis











## Item 8. Discussion of Site Identification with Prioritization Planning Process





# Planning Framework

---

- + Compile list of projects
- + Analyze each project
- + Provide improvement recommendations
- + Create a score
- + Revisit to better meet objectives



# Multi-benefit Planning Framework





# Water and Environment Committee

## Purpose

---

The purpose of the Water and Environment committee is to identify and prioritize the opportunities that focus on the community need for safety and responsibility for a sustainable environment for the Upper Los Angeles River and its Tributaries using an integrated approach (water resources/conservation /quality/recreation source)

Step 1. Address Objectives



# Objectives

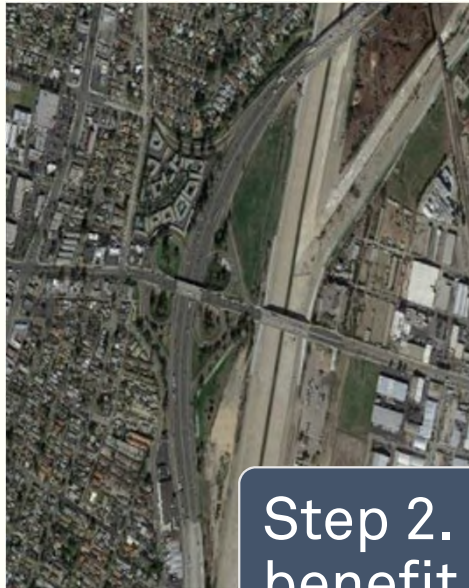
- +Create equitable opportunities to enhance the ecosystem, **watershed health**, water supply, improve water quality, habitat, and biodiversity
- +Maintain or enhance **flood management**
- +**Balance** the utilization of available space and resources for both the environment and the community
- +Assess all opportunities for resiliency to **climate change**

Step 1. Address Objectives



# Example W&E Improvements from Committee

- +Stormwater Capture
- +Habitat Restoration/  
Corridors
- +Channel Access
- +Stream/Habitat  
Restoration
- +Floodplain Expansion
- +Pocket Parks



Step 2. Identify feasible multi-benefit improvements



# Clearly Tying Improvements to Objectives

Objective: Create equitable opportunities to enhance the ecosystem, watershed health, water supply, improve water quality, habitat, biodiversity and watershed health

## Applicable Improvements (“Building Blocks”)

- +Stormwater capture
- +Habitat restoration
- +Parklets
- +Stream Restoration
- +Floodplain expansion

**Bundle into  
Multi-Benefit  
Projects in Step 3**

Step 2. Identify feasible multi-benefit improvements



## PROJECT GAPS

Source: Ibid



Do something here!

Vanalden Park & Sediment Basins

PLUMMER ST.

NORDHOFF ST.

PARTHENIA ST.

CHASE ST.

ROSCOE BLVD.

STRATHERN ST.

INGOMAR ST.

Northridge Fashion Center

Walnut Grove Shopping Center

Vanalden Park

NORTH RIDGE METROLINK STATION

WP Receiving Station

Napa Street School

Cleveland H.S.

Blythe Street School

TRANSMISSION CORRIDOR

NORTH

SIERRA MADRE

e/  
ULART

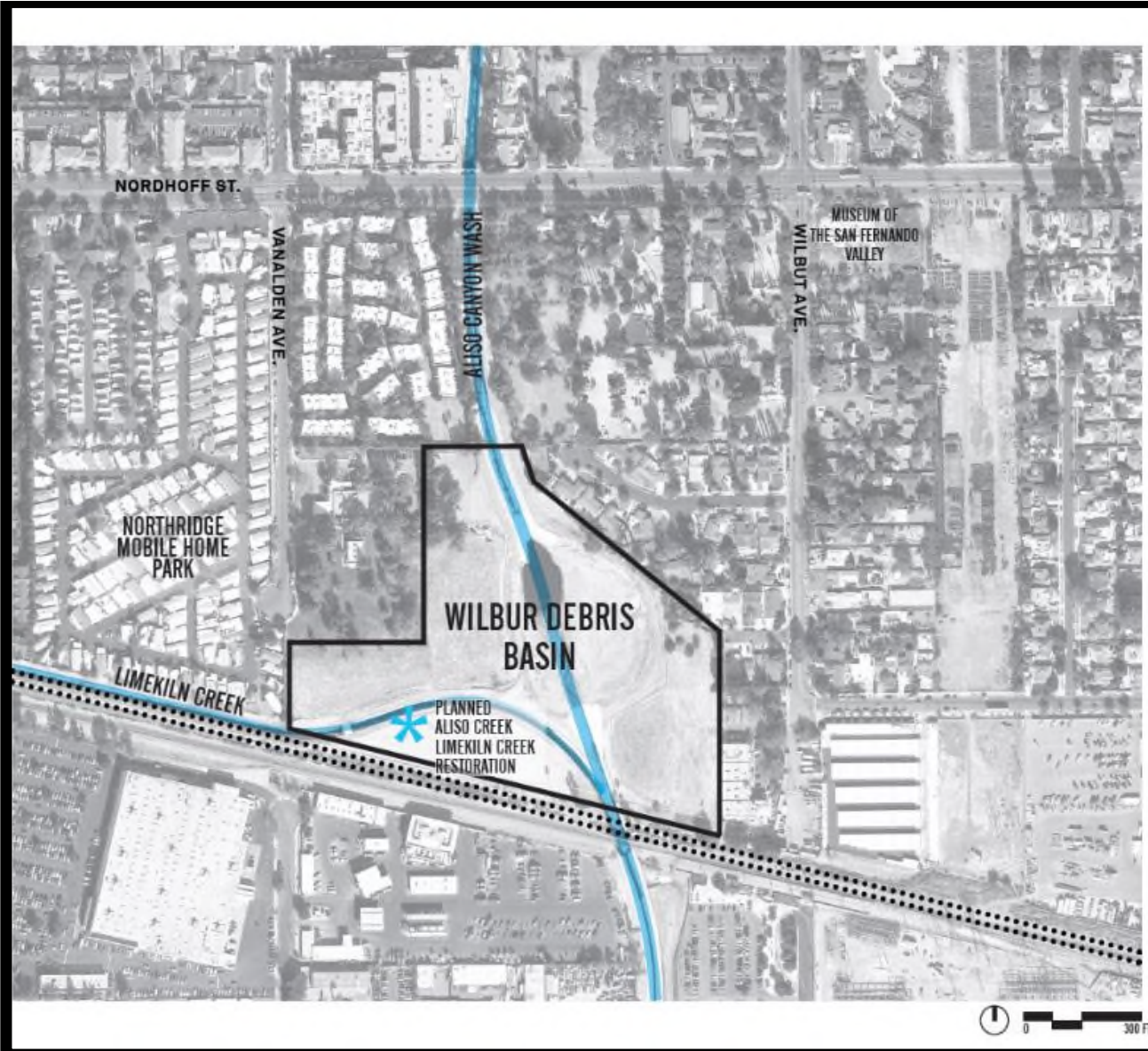


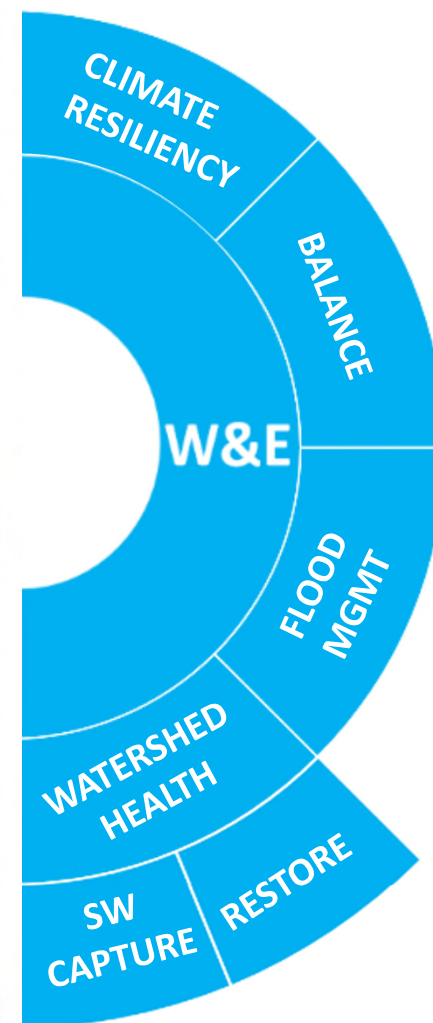
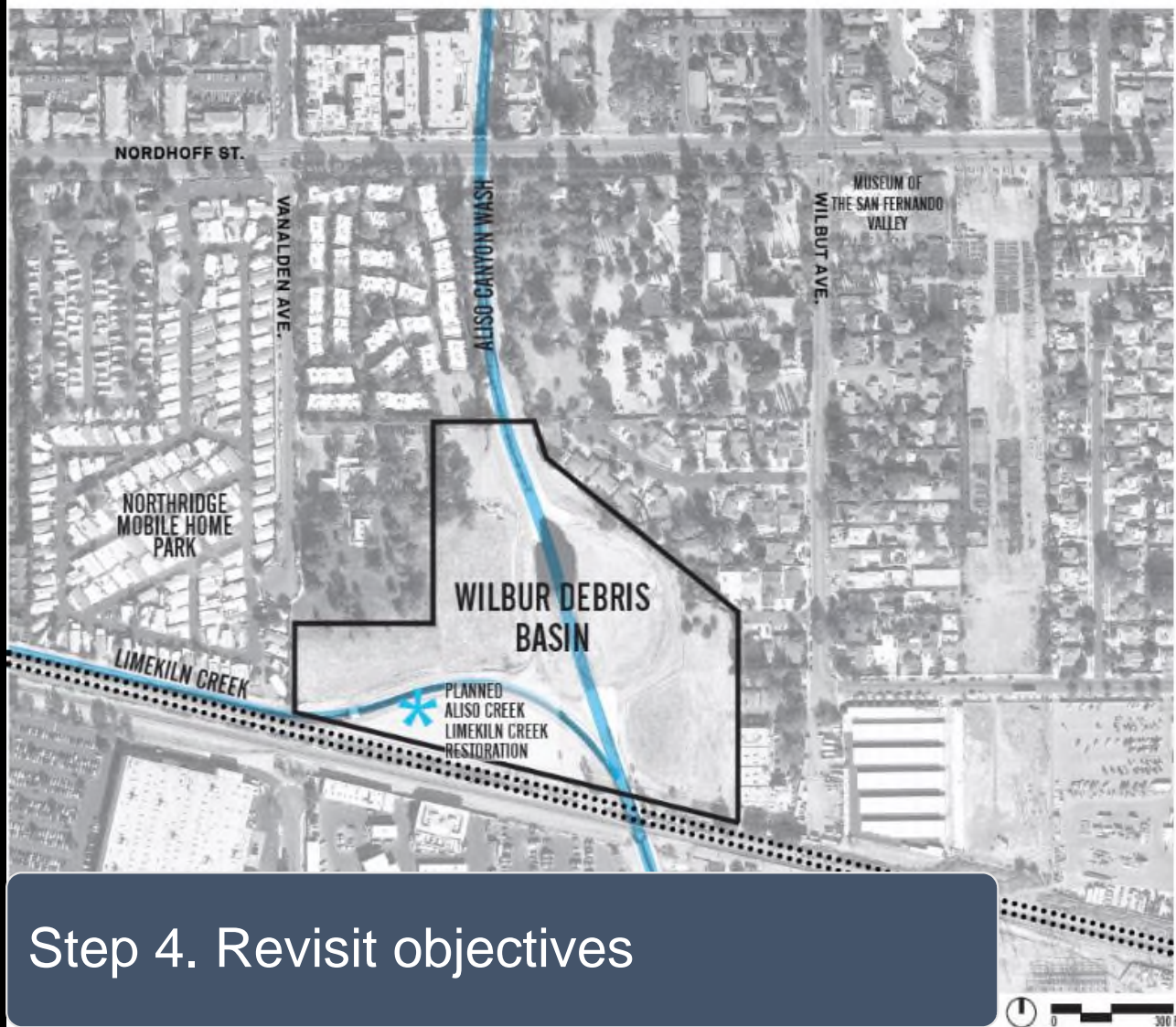
# WILBUR DEBRIS BASIN

ALISO CANYON WASH

- + Aliso Canyon Wash
- + Publicly Owned Land
- + Tributary Adjacent
- + Portions Already Planned
- + Comment from November Committee Meeting

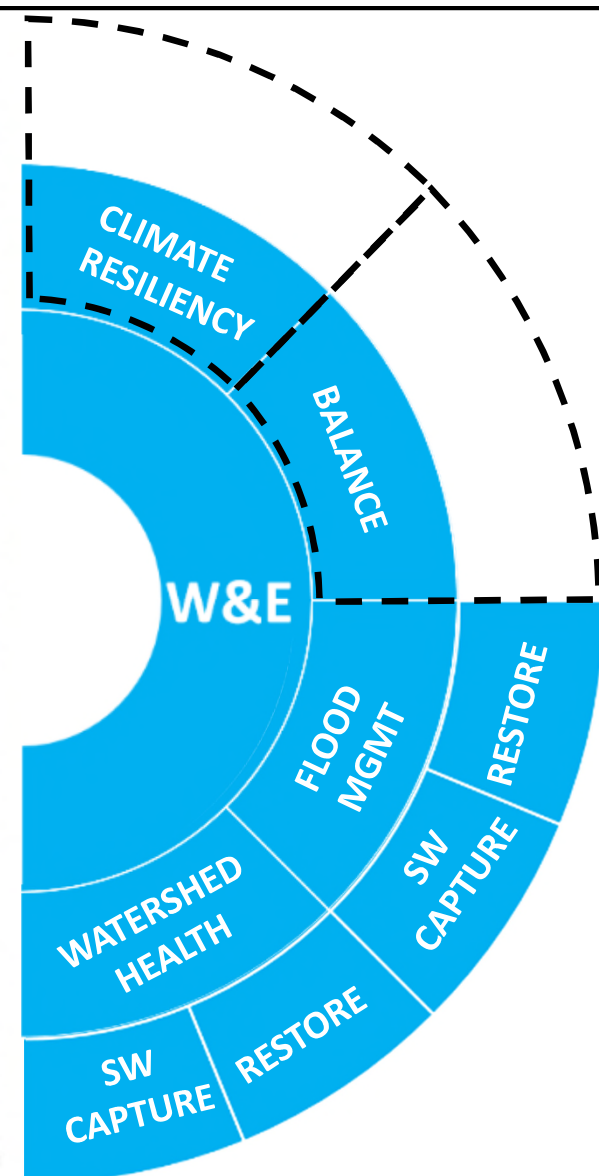
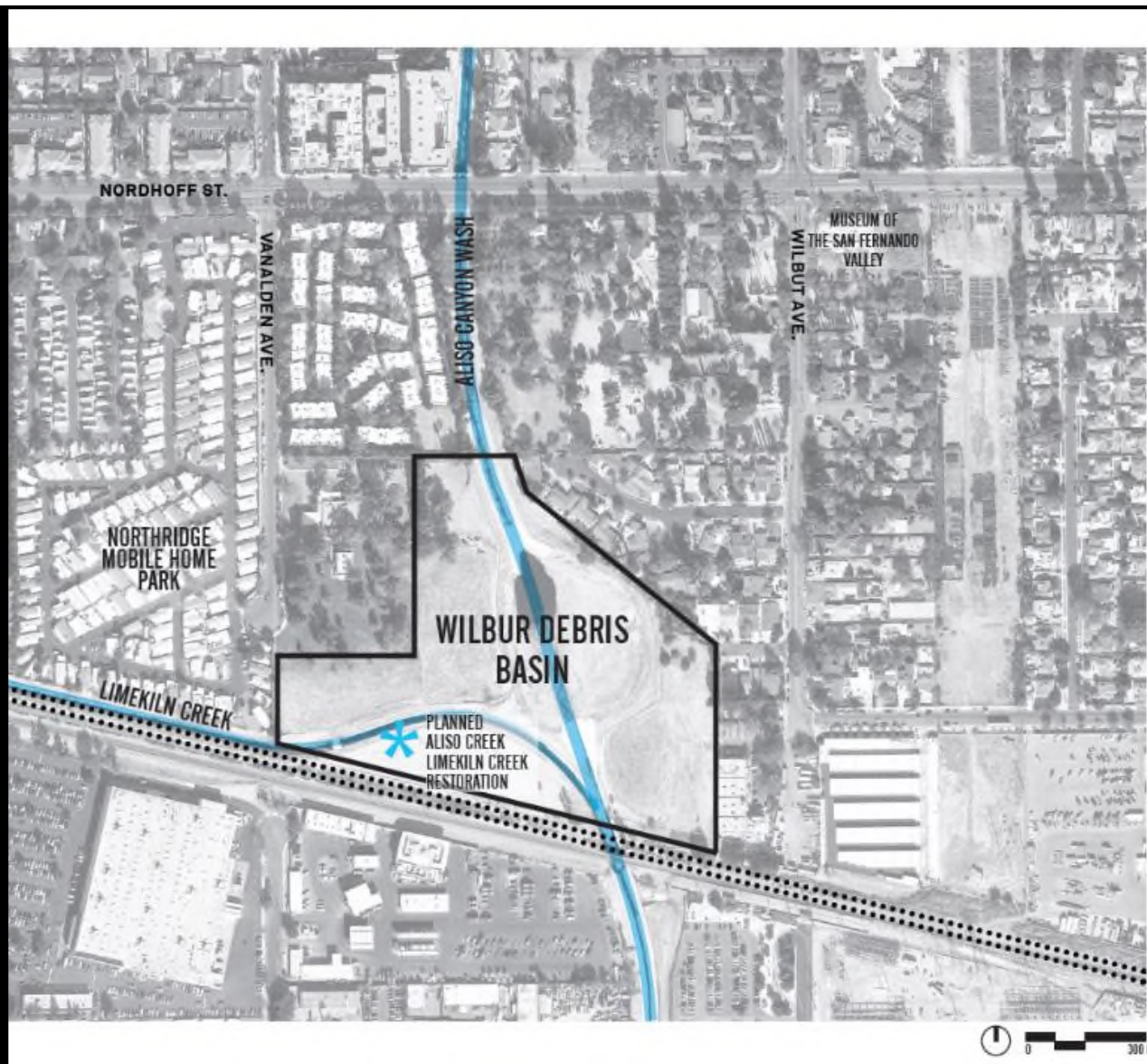
STUDIO-MLA

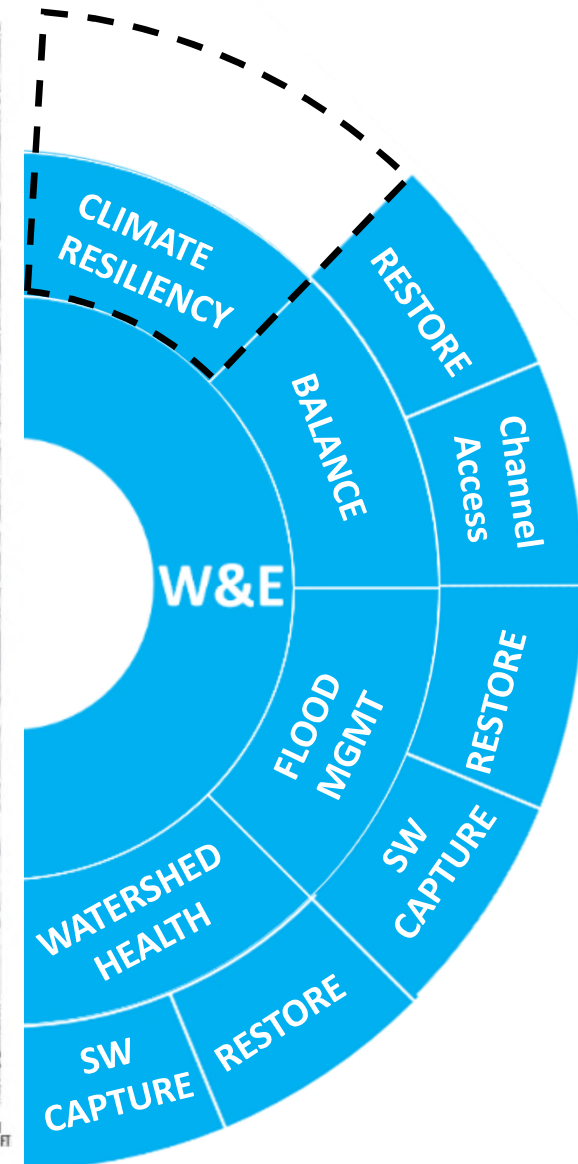
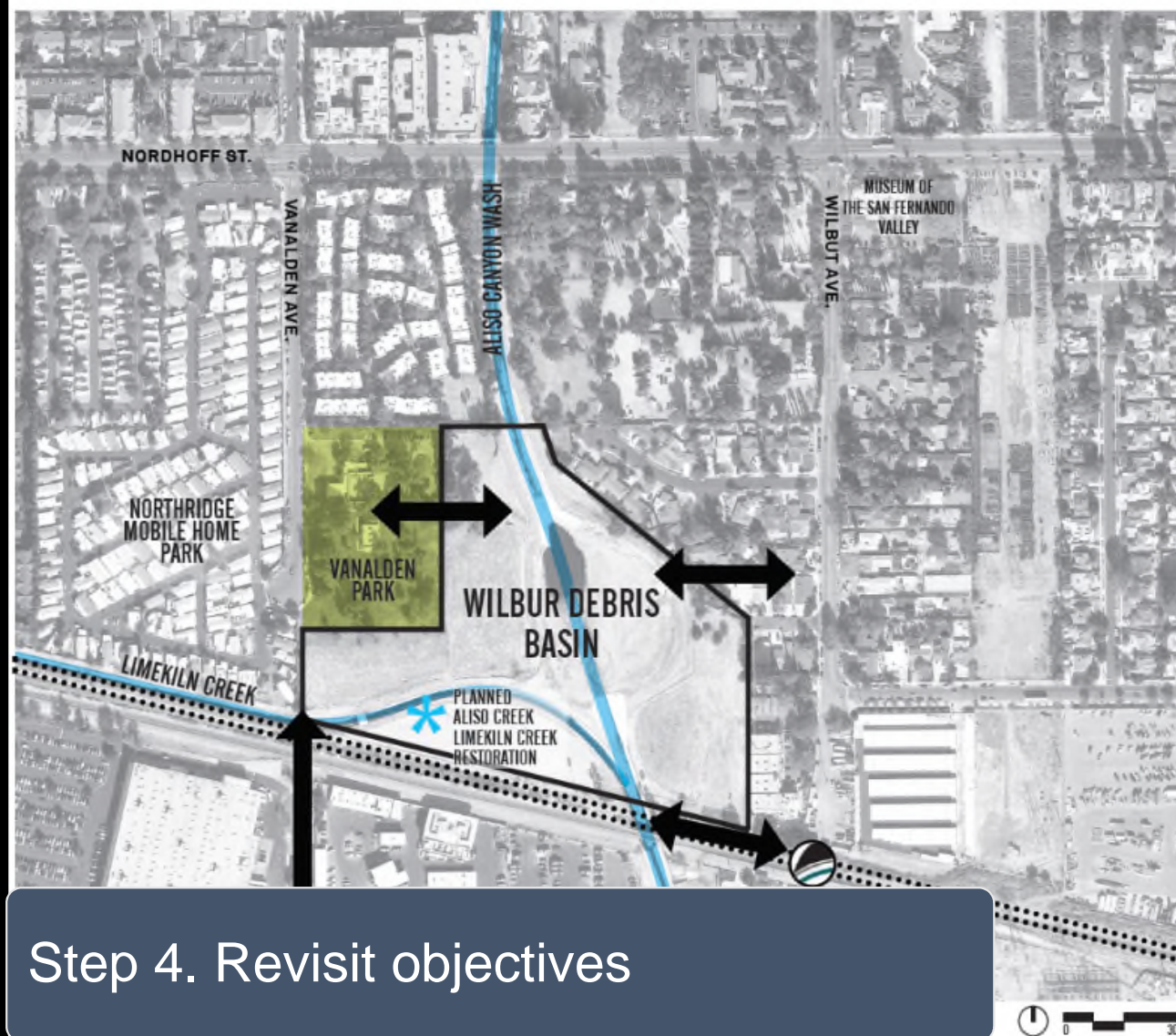




Step 4. Revisit objectives





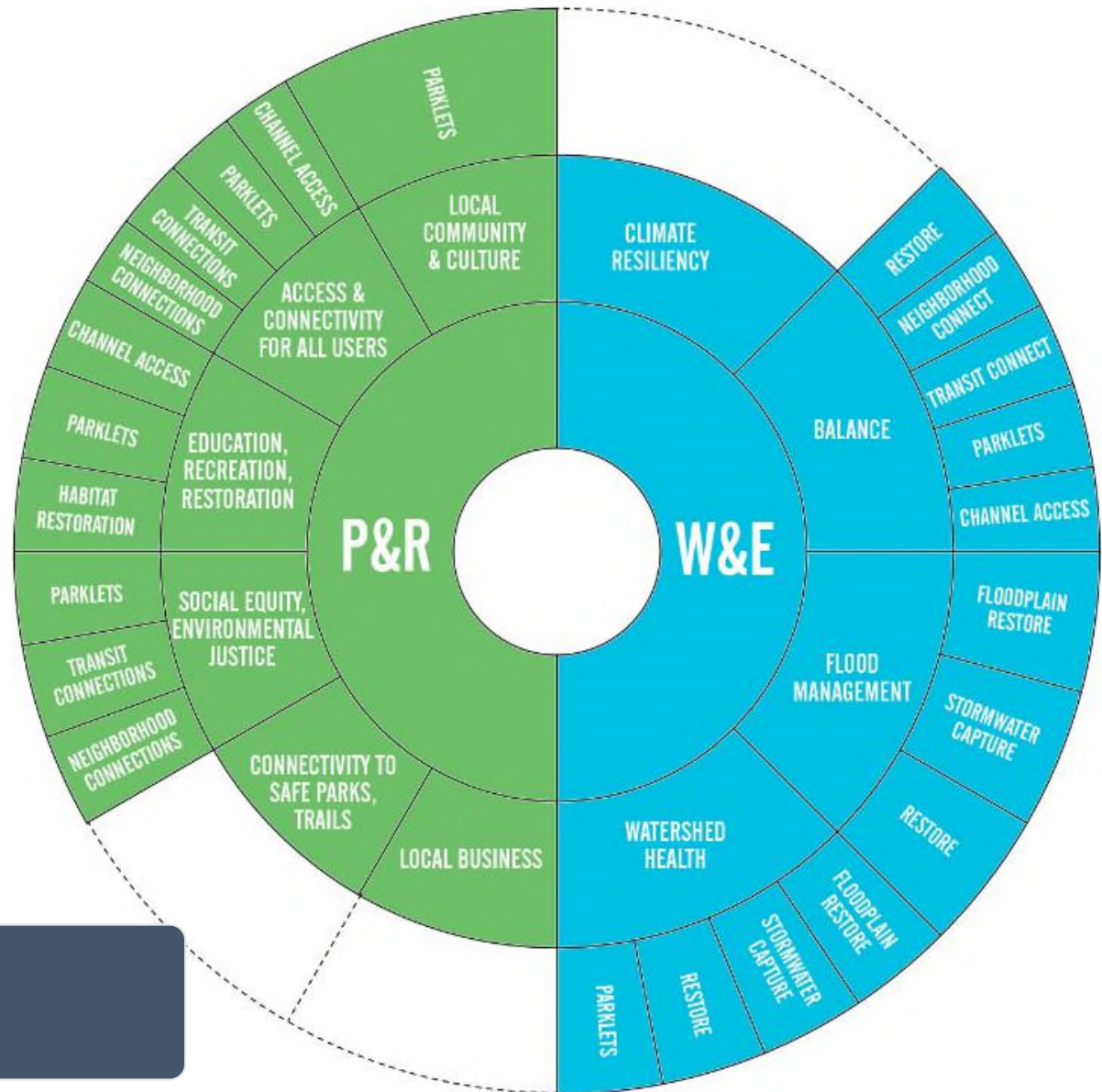




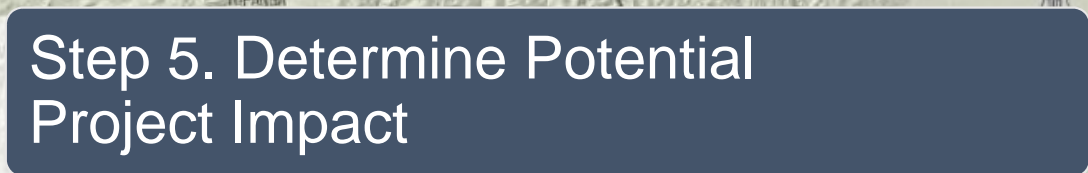
# All Objectives

|                       |  |
|-----------------------|--|
| People and Recreation | Feature and promote the importance of the community and local culture  |
|                       | Identify and create improved, inspirational, inclusive access and connectivity to public space, the river and tributaries for all users                                |
|                       | Incorporate and Identify opportunities for education, recreation, ecosystem and habitat restoration, passive recreation, and examine their relationship with baseflows |
|                       | Provide connectivity to safe parks, open spaces, trails  |
|                       | Focus on social equity and environmental justice during the planning process   |
|                       | Strengthen local business and vendors to foster job creation and economic growth   |
| Water and Environment | Create equitable opportunities to enhance the ecosystem, watershed health, water supply, improve water quality, habitat, biodiversity and watershed health             |
|                       | Maintain or enhance flood management   |
|                       | Balance the utilization of available space and resources for both the environment and the community  |
|                       | Assess all opportunities for resiliency to climate change  |

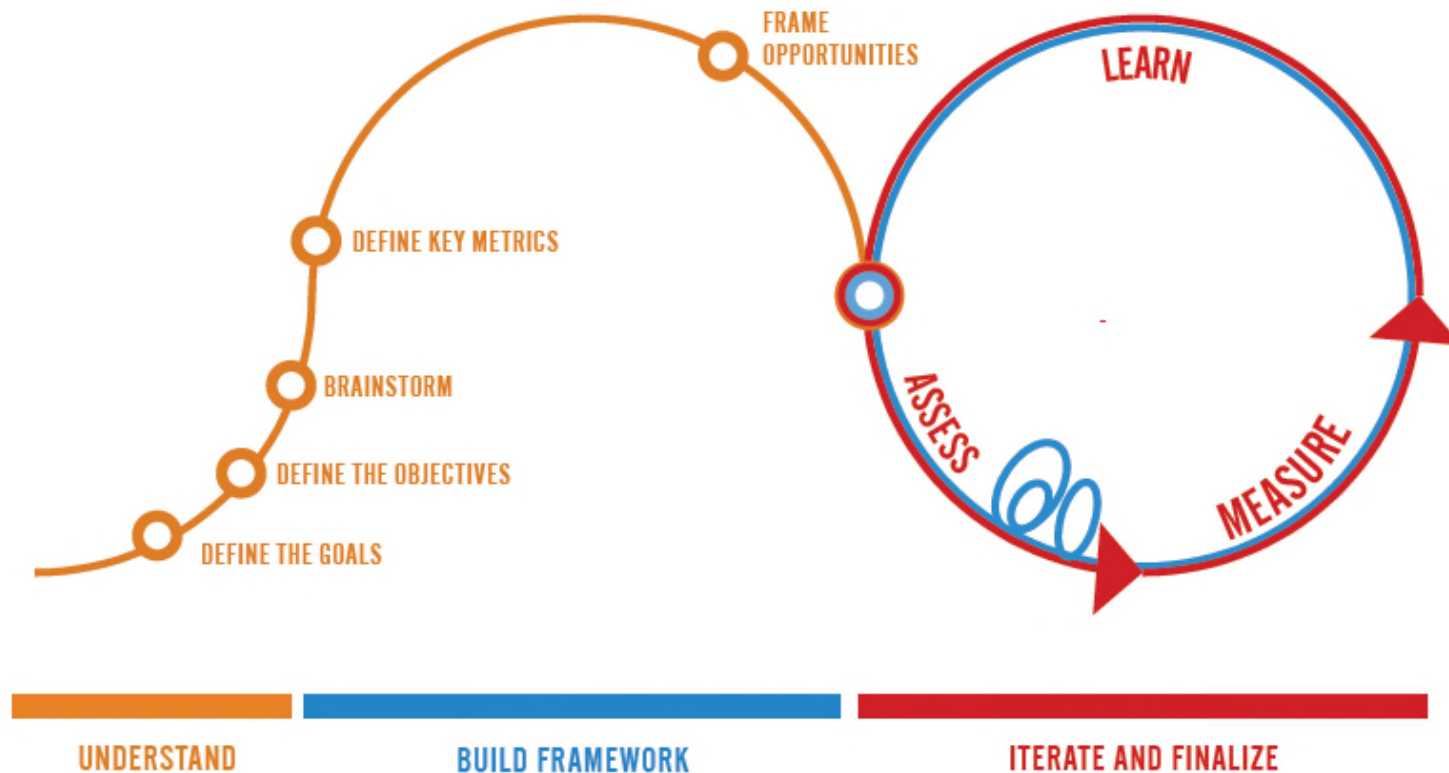
## Step 5. Determine Potential Project Impact







# Planning Framework







## Item 9. Discussion of Project Criteria Development Planning Process

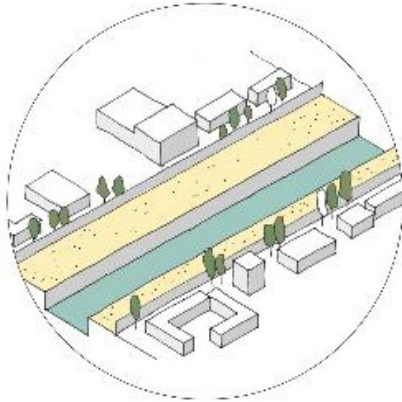


## **Exercise: Discuss and develop improvements for example projects**

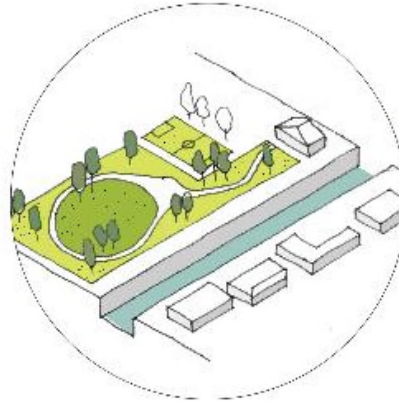
---

- + Sites represent the different typologies identified during committee and working group meetings
- + One site per selected tributaries
- + Purpose is to discuss needs and provide input for those types of projects (schools, bridges, etc.) and projects along those tributaries
- + Join the planning team for a site level project example analysis

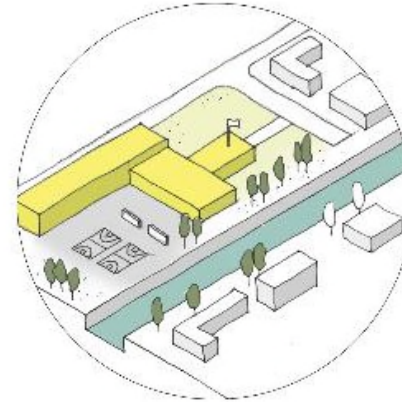




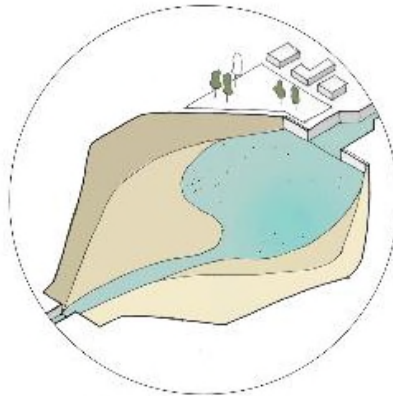
Channel Right of Way



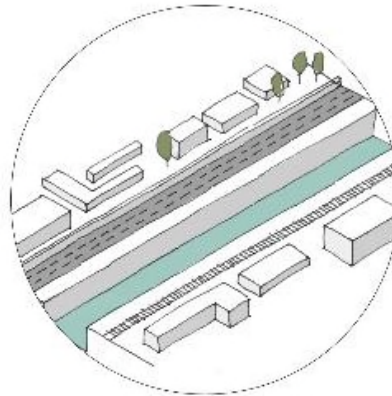
Existing Park



School



Stormwater Basin



Bridge / Urban  
Barrier



Ecological Connection

## OPPORTUNITY SITE LAND TYPOLOGIES



# STORMWATER BASIN

## ALISO CANYON WASH



### CURRENT USE

- + Detention basin for flood management

### UNIQUE ATTRIBUTES

- + Just north of the confluence of Limekiln and Aliso Canyon Wash
- + Surrounding neighborhood scores 78% on CES 3.0
- + LA County is already planning work in the area

### MENTIONED DURING

- + Water and Environment December Committee Meeting
- + Working Group January Meeting

STUDIO-MLA

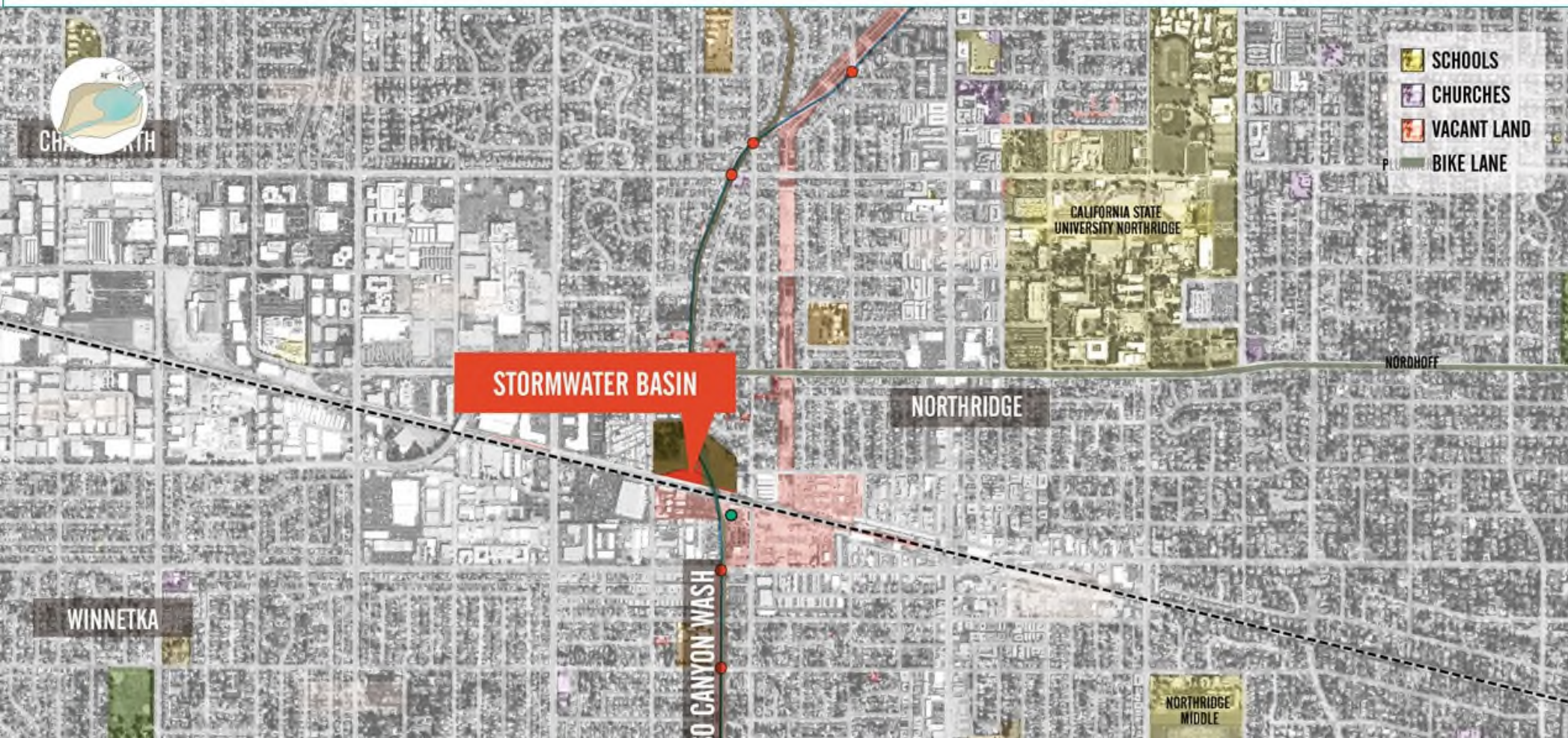




# STORMWATER BASIN // ALISO CANYON

ECOLOGICAL // COMMUNITY // SITE

*Improve Riparian habitat?  
Maintain and improve flood protection?  
Enhance the waterway's natural quality*





# STORMWATER BASIN // ALISO CANYON

ECOLOGICAL // **COMMUNITY** // SITE

*Connection to schools? MetroLink?  
Integrate community amenities?*





# STORMWATER BASIN // ALISO CANYON

ECOLOGICAL // COMMUNITY // **SITE**

*Maintain and improve flood protection?*  
*Establish identity of the waterway?*  
*Visual and physical access to the waterway?*







## CHANNEL RIGHT-OF-WAY

### BURBANK WESTERN CHANNEL



#### SIZE

- + Approximately 20' Wide, Both Sides of Channel
- + Runs Along Majority of Tributary

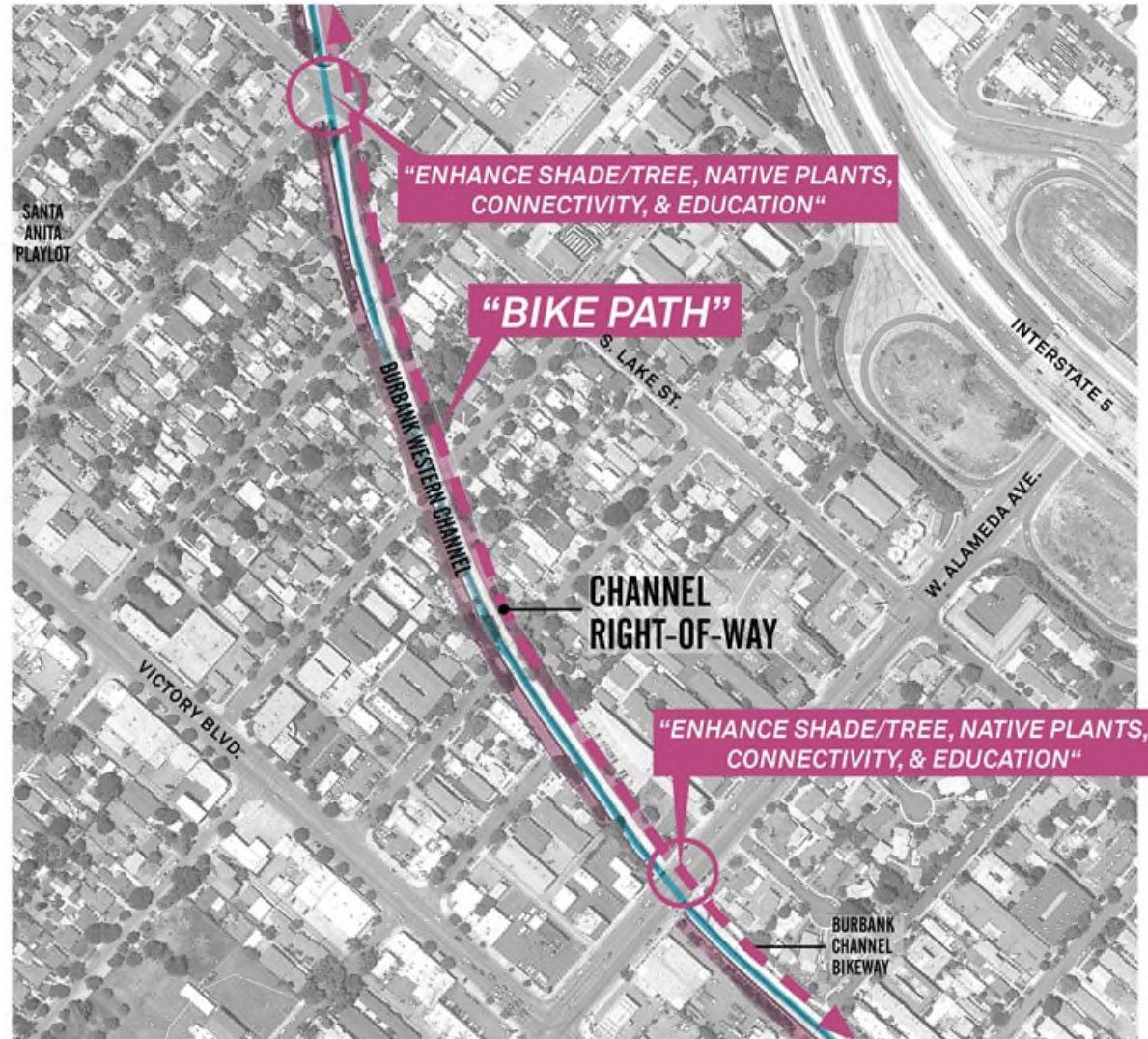
#### CURRENT USE

- + Maintenance path for flood control channel

#### MENTIONED DURING

- + Water and Environment December Committee Meeting
- + People and Recreation December Committee Meeting

STUDIO-MLA





# CHANNEL RIGHT-OF-WAY // BURBANK

**ECOLOGICAL** // COMMUNITY // SITE

*Link Verdugo and Griffith?  
Recreational and ecological benefits?*

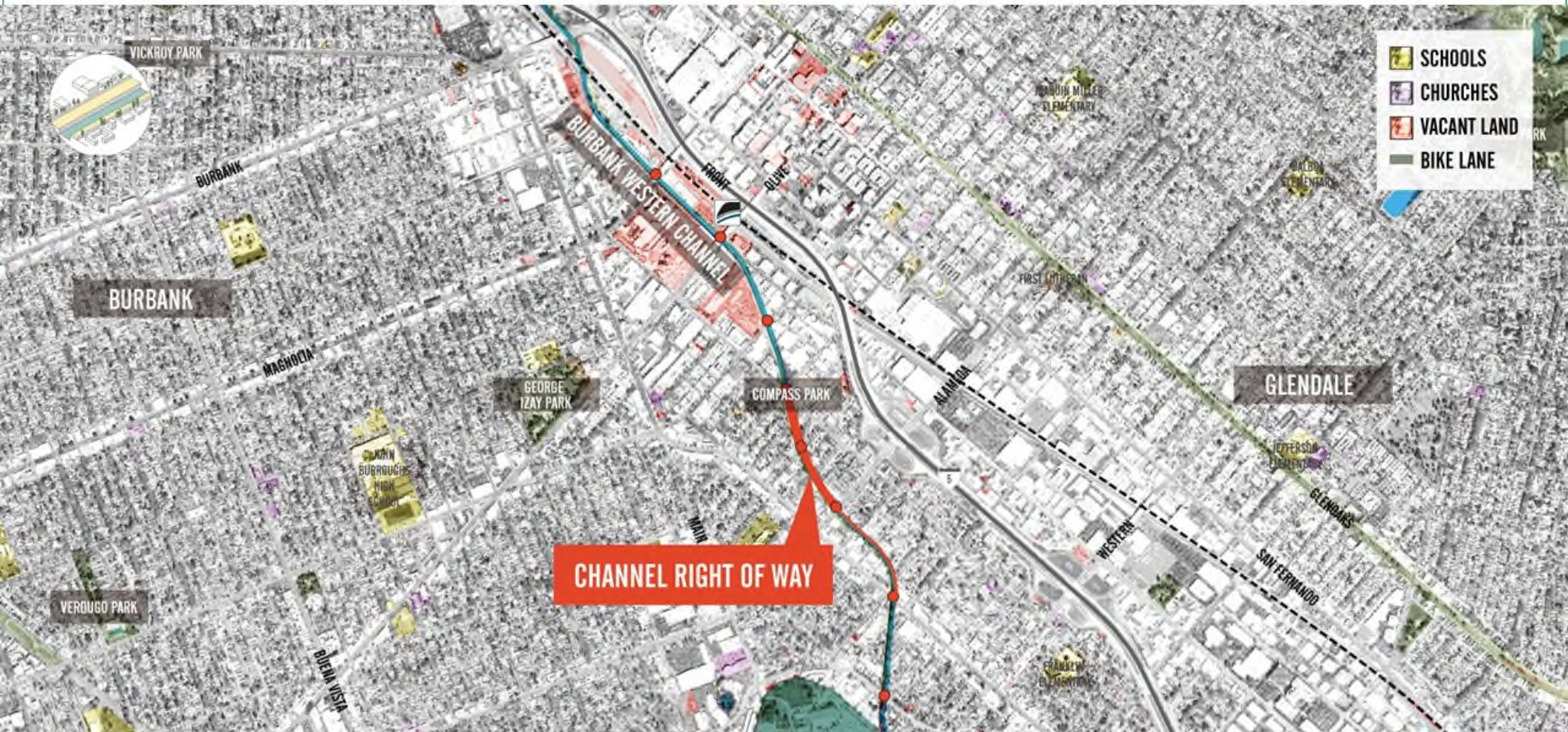




# CHANNEL RIGHT-OF-WAY // BURBANK

ECOLOGICAL // **COMMUNITY** // SITE

Key places to connect to?  
Nature or urban path?  
Public art?

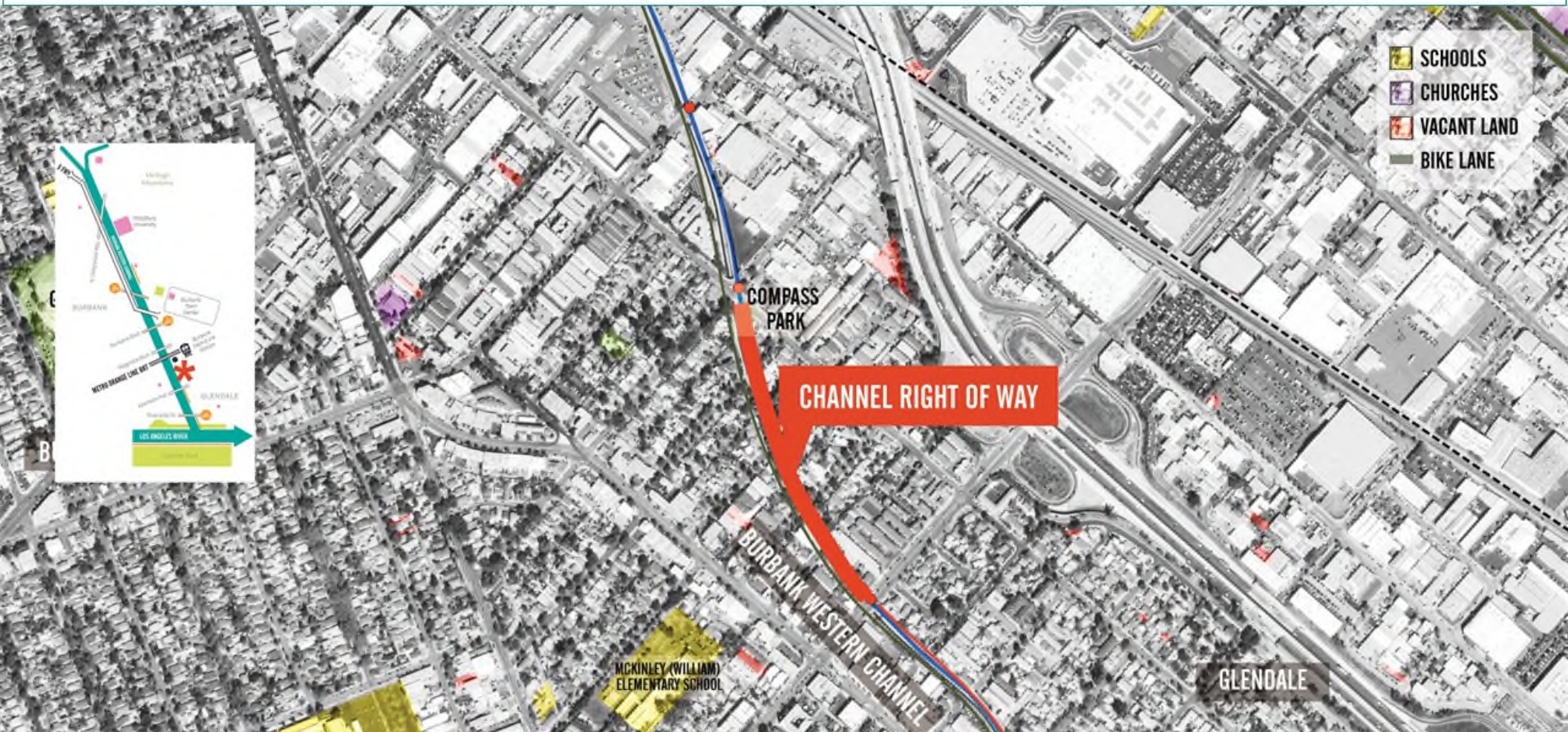




# CHANNEL RIGHT-OF-WAY // BURBANK

ECOLOGICAL // COMMUNITY // **SITE**

Local access points?  
Connection to Compass Park?







## EXISTING PARK

### ARROYO SECO



#### CURRENT USE

- + Public Open Space & Recreation Facilities

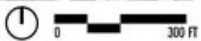
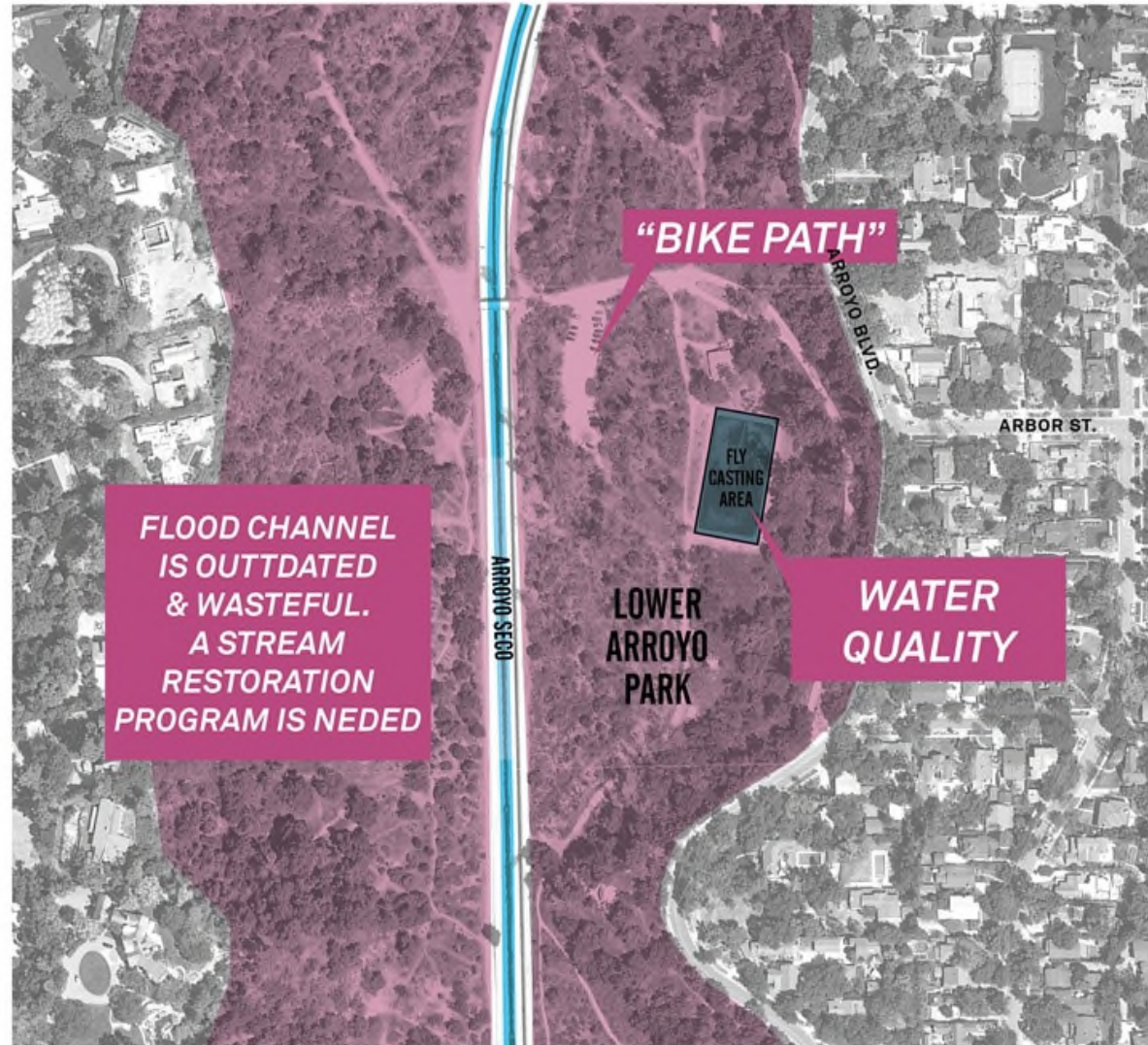
#### ADJACENCIES

- + Single Family Residential

#### MENTIONED DURING

- + Water and Environment December Committee Meeting
- + Working Group January Meeting

STUDIO-MLA





# EXISTING PARK // ARROYO SECO

**ECOLOGICAL** // COMMUNITY // SITE

*Preserve & restore waterways' ecology?  
Integrate watershed best management practices?  
Maintain and Improve Flood Protection?*





# EXISTING PARK // ARROYO SECO

ECOLOGICAL // **COMMUNITY** // SITE

*Extend Arroyo Seco into community?*

*Link to Gold Line?*

*BMPS, gardens, educational zones in the park?*





# SCHOOL // PACOIMA WASH

ECOLOGICAL // COMMUNITY // **SITE**

*Connection between schools and parks?  
Joint-use?  
Ecology curriculum?*







## SCHOOL

PACOIMA WASH



**SIZE** 34 acres

### CURRENT USE

+ High School

### MENTIONED DURING

- + People and Recreation December Committee Meeting
- + Water and Environment December Committee Meeting
- + Water and Environment Public Comment December Committee Meeting
- + Working Group January Meeting

**STUDIO-MLA**

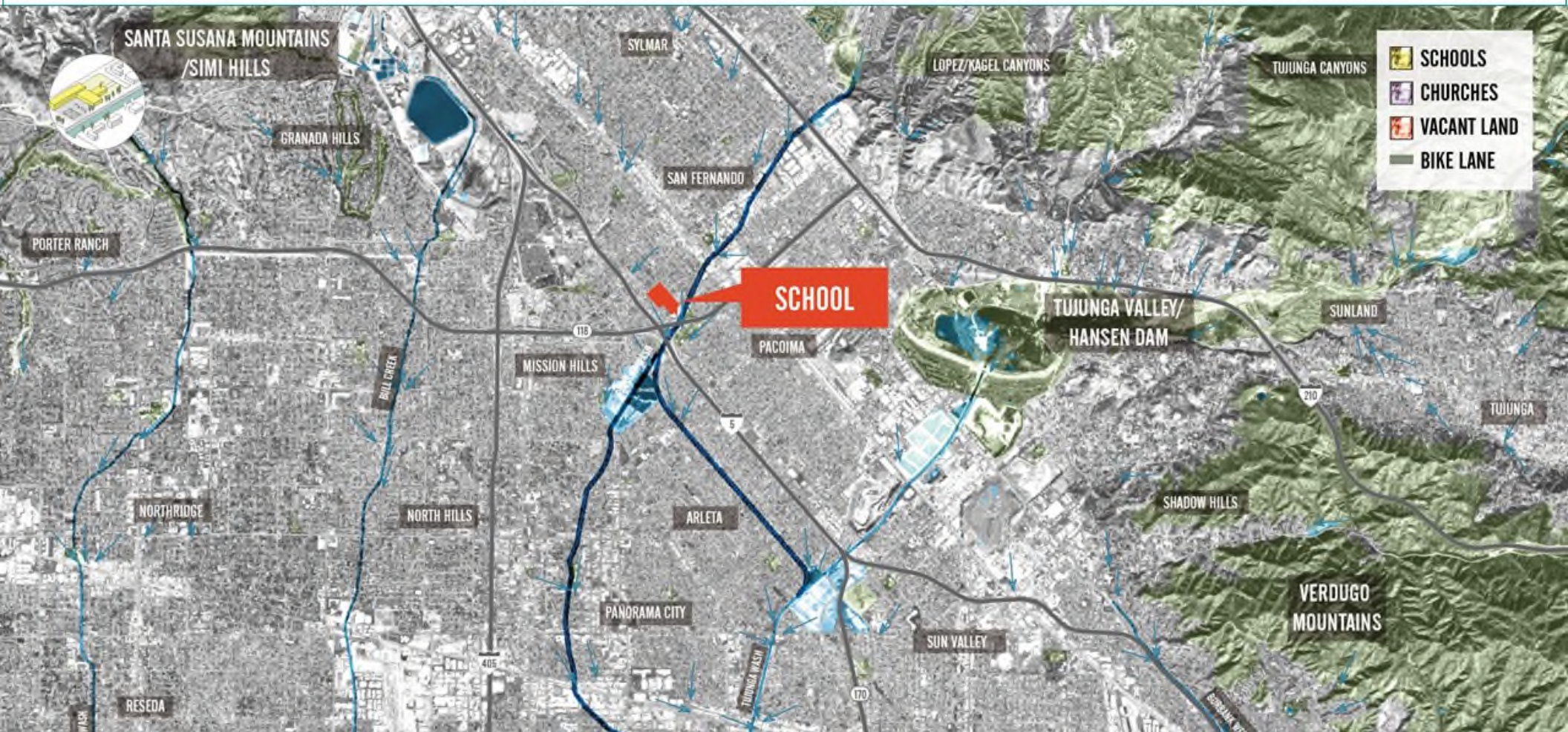




# SCHOOL // PACOIMA WASH

## ECOLOGICAL // COMMUNITY // SITE

*Environmental education system network?  
Water quality retrofits?  
Outdoor classrooms as water monitoring stations?*





# SCHOOL // PACOIMA WASH

ECOLOGICAL // **COMMUNITY** // SITE

*Green streets extension?  
Ecological curriculum?  
Community stewards?*





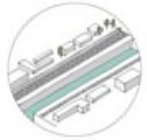
# SCHOOL // PACOIMA WASH

ECOLOGICAL // COMMUNITY // SITE

Connection between schools and parks?  
Joint-use?  
Ecology curriculum?







## BRIDGE TUJUNGA WASH



### CURRENT USE

+ Vehicular Bridge

### MENTIONED DURING

- + Water and Environment Public December Committee Meeting
- + Working Group January Meeting

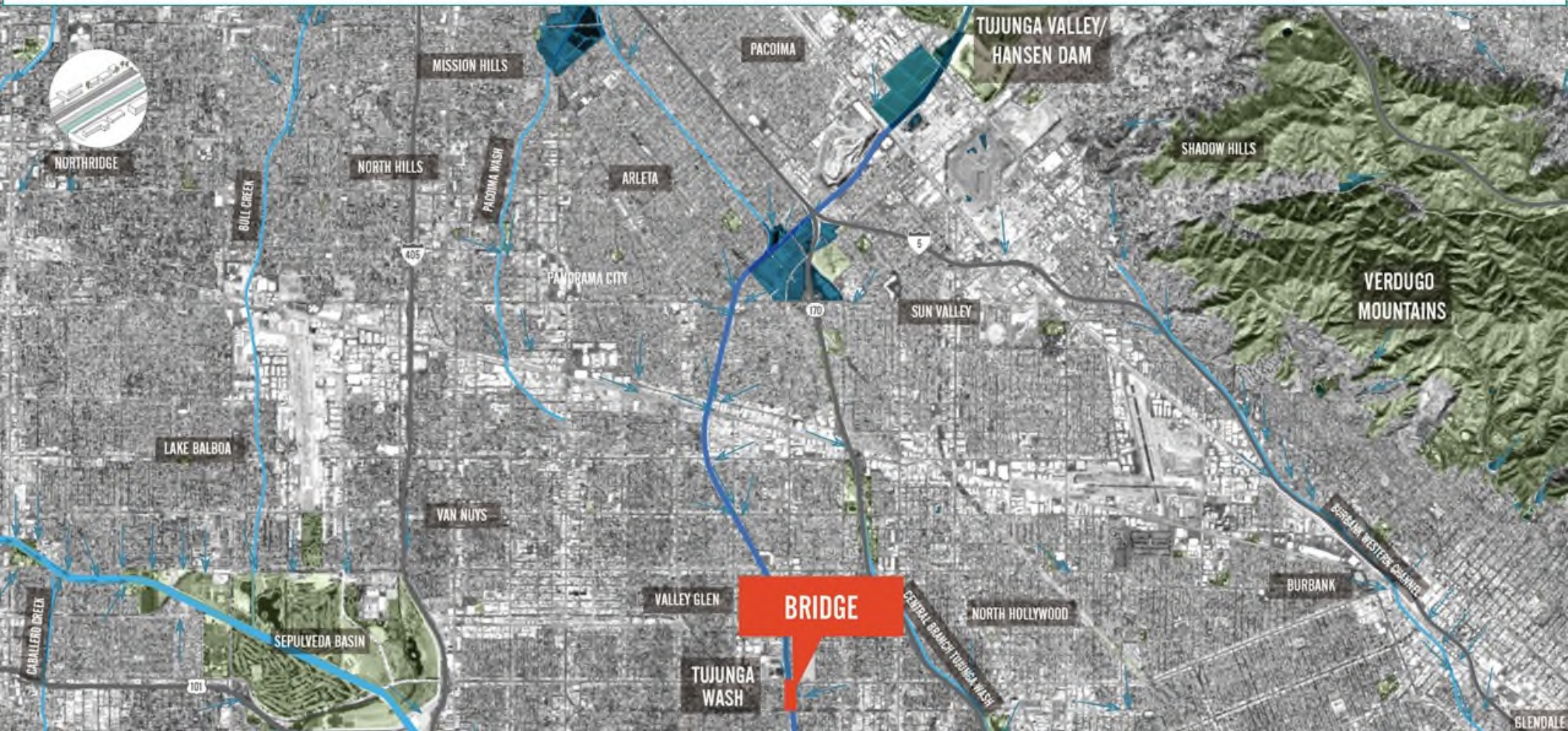




# BRIDGE // TUJUNGA WASH

## ECOLOGICAL // COMMUNITY // SITE

*Access to the wash? other trails?  
Connected trail system?*

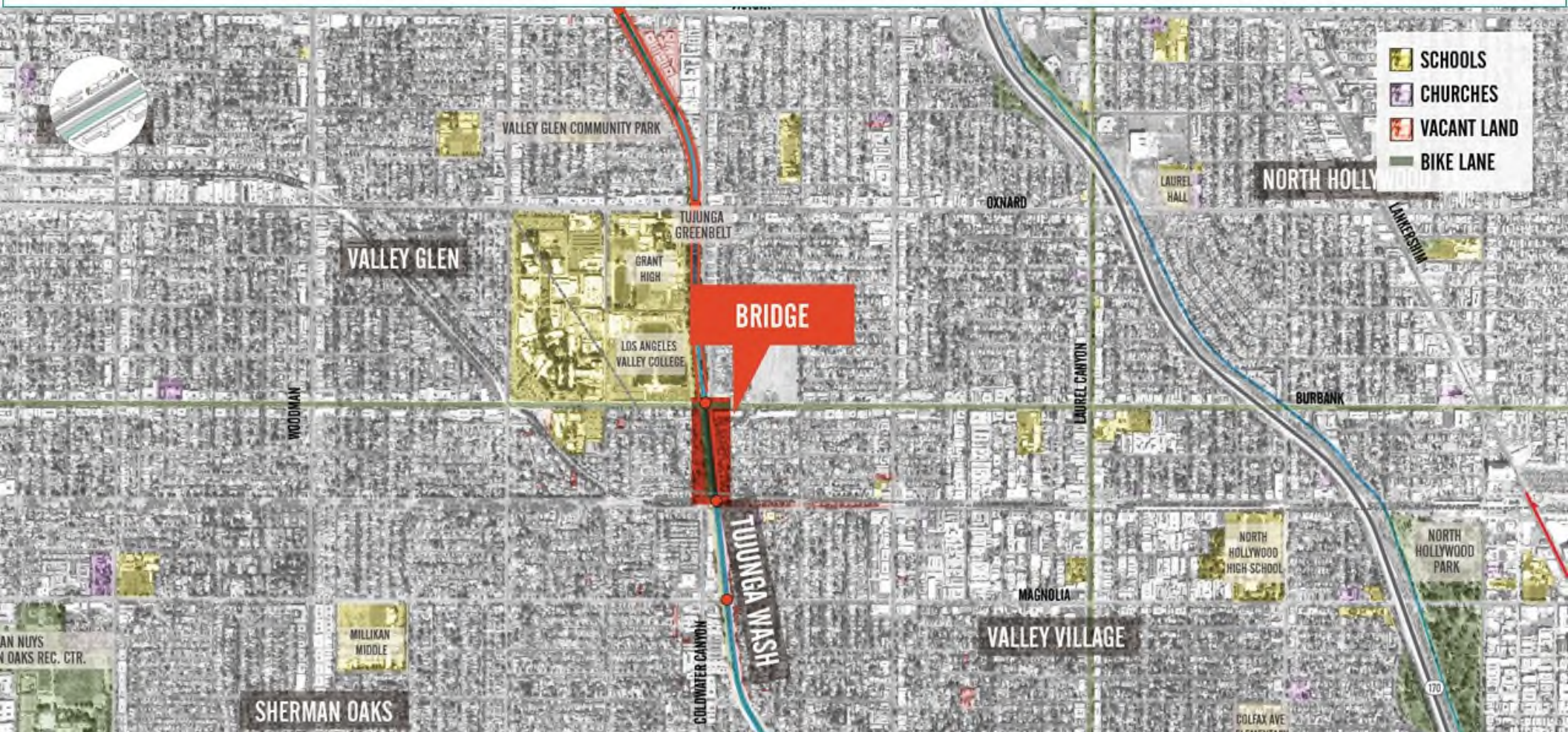




# BRIDGE // TUJUNGA WASH

ECOLOGICAL // **COMMUNITY** // SITE

*Preserve & restore waterways' ecology?*  
*Integrate watershed best management practices?*

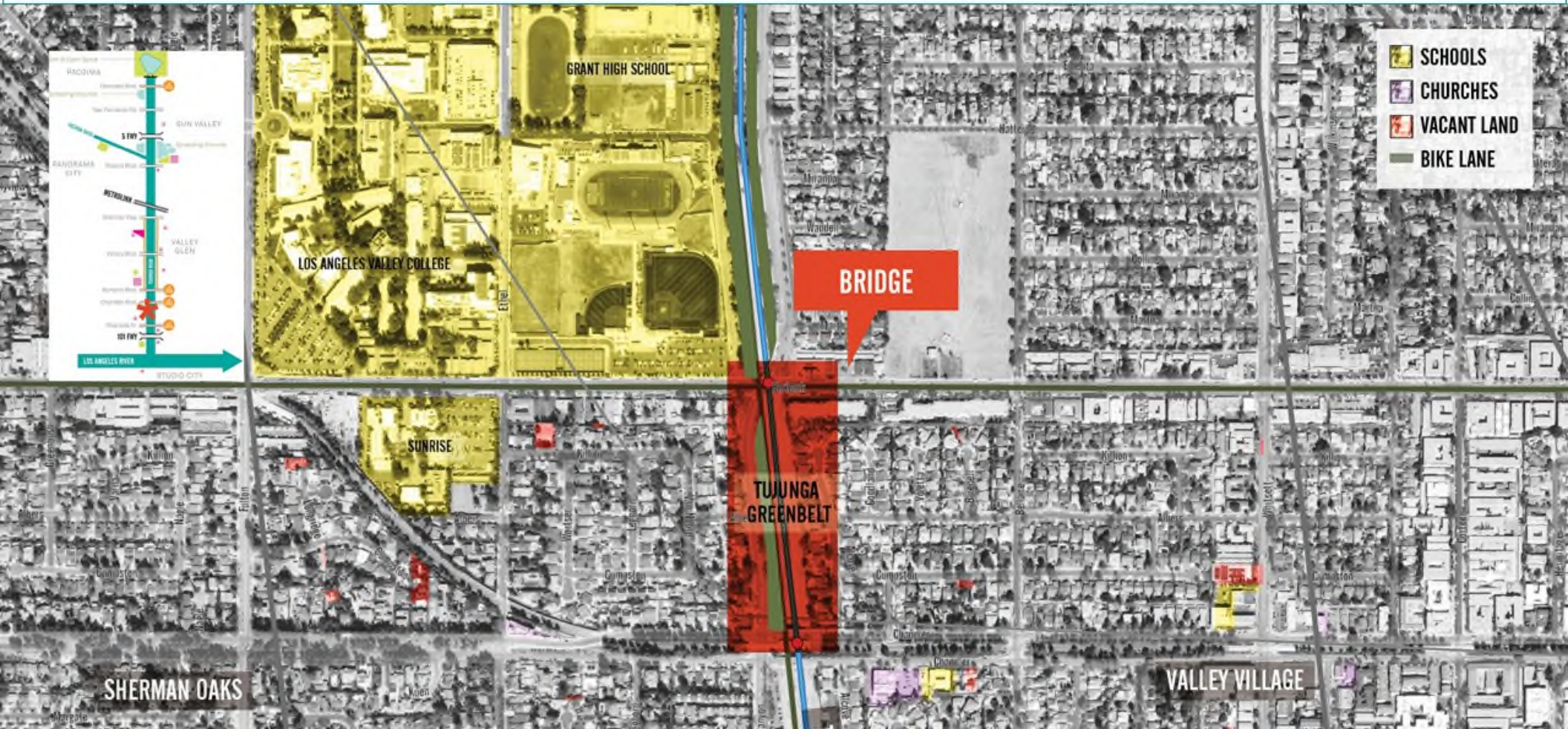




# BRIDGE // TUJUNGA WASH

## ECOLOGICAL // COMMUNITY // SITE

*Bridges with small parks, plazas, etc?*  
*Retrofit existing bridges?*  
*Bridge design that celebrates Tujunga Wash?*







- + People and Recreation Public December Committee Meeting
- + People and Recreation December Committee Meeting
- + Water and Environment Public December Committee Meeting
- + Working Group January Meeting



**"INTERACTIVE OPPORTUNITIES WITH PARK"**

## “TRAIL”



# ECOLOGICAL CONNECTION // VERDUGO

ECOLOGICAL // COMMUNITY // SITE

*Connect Altadena Foothills, Verdugo Mountains, and Griffith Park?*

*Recreational and ecological connection?*





# ECOLOGICAL CONNECTION // VERDUGO

ECOLOGICAL // **COMMUNITY** // SITE

*Connect to area's schools?  
Buffer Verdugo from the I-210?*





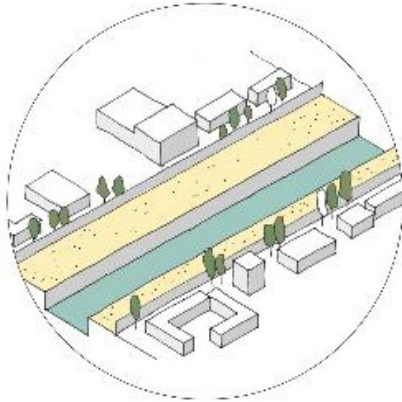
# ECOLOGICAL CONNECTION // VERDUGO

ECOLOGICAL // COMMUNITY // **SITE**

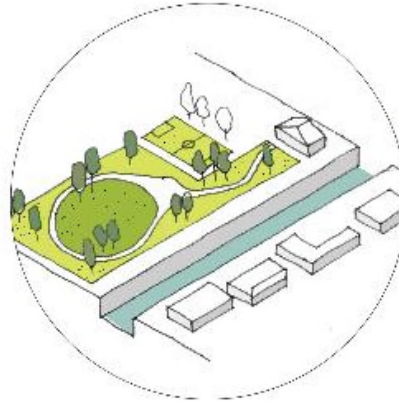
*Extend Verdugo Wash to the Verdugo Mountains?  
Improve access?  
Reinforce east-west connections?*



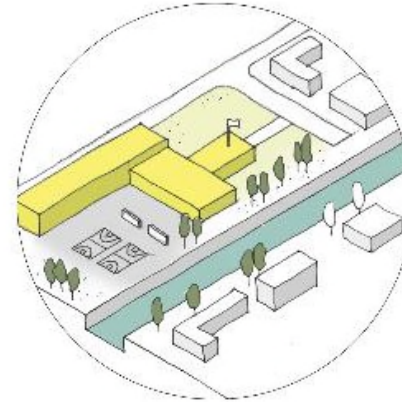




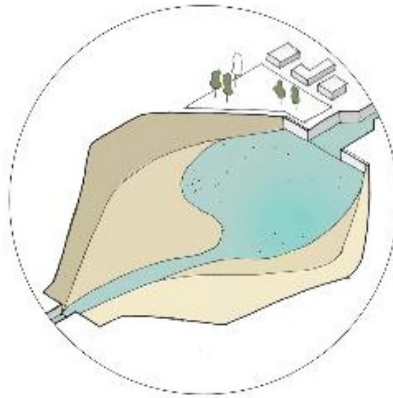
Channel Right of Way



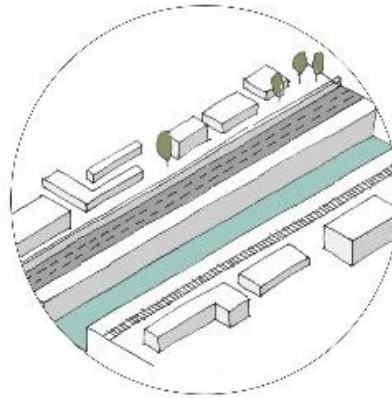
Existing Park



School



Stormwater Basin



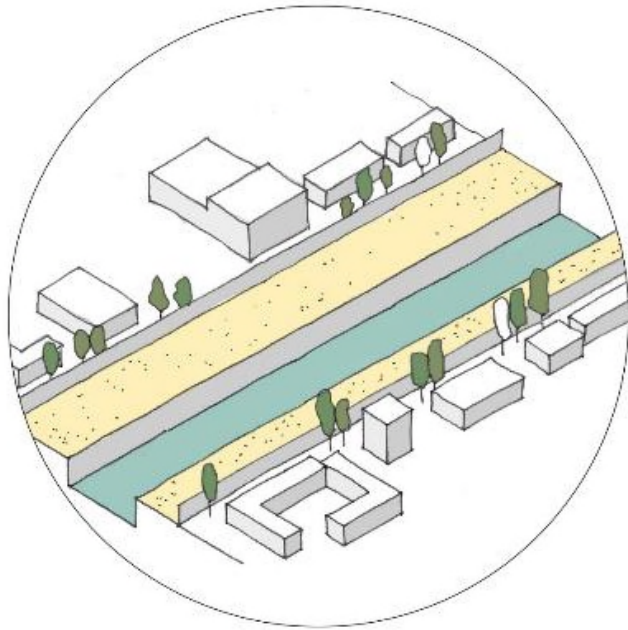
Bridge / Urban  
Barrier



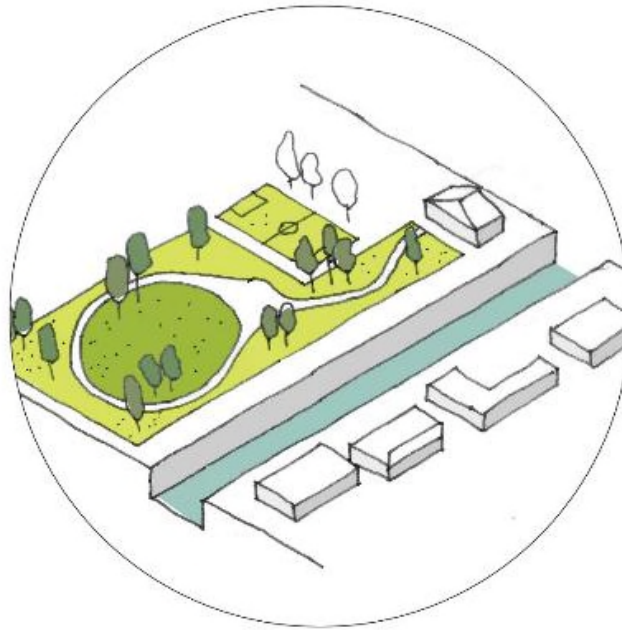
Ecological Connection

## SUMMARY AND REPORT OUT

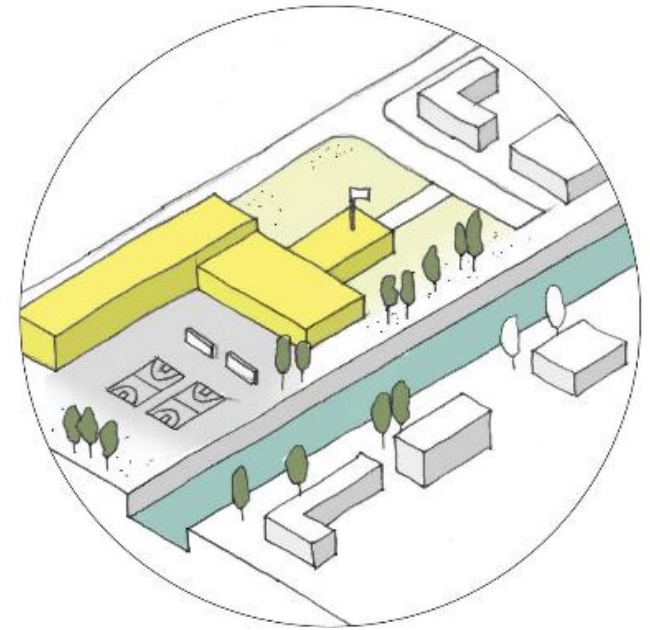




Channel Right of Way



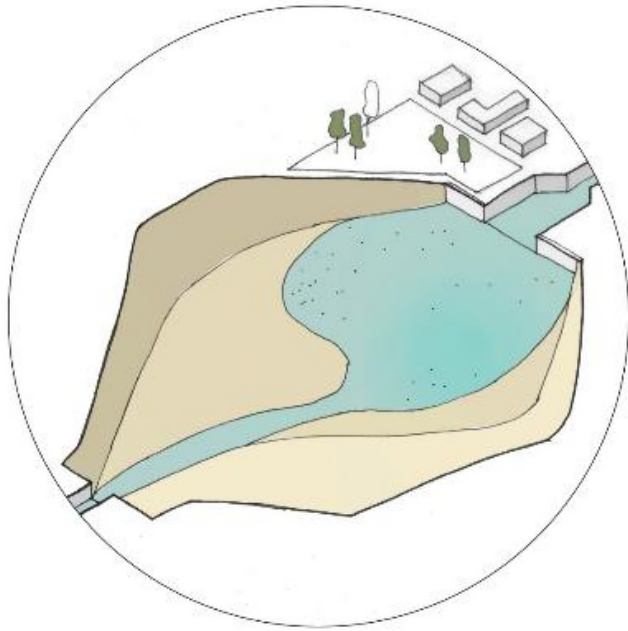
Existing Park



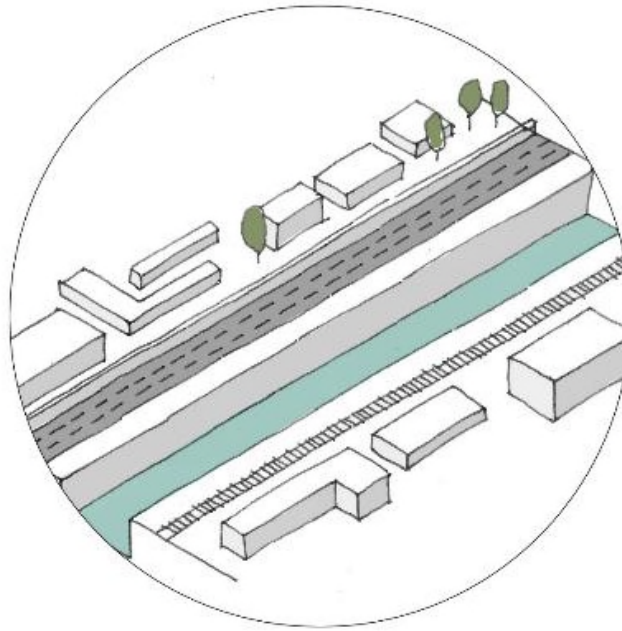
School

## OPPORTUNITY SITES LAND TYPOLOGIES





Stormwater Basin



Bridge /Urban Barrier



Ecological Connection

## OPPORTUNITY SITES LAND TYPOLOGIES



# Plan Development Timeline

2018

2019

YOU  
ARE  
HERE

Inventory  
and  
Analysis

Initial  
Opportunity  
Sites

Constraints  
Analysis

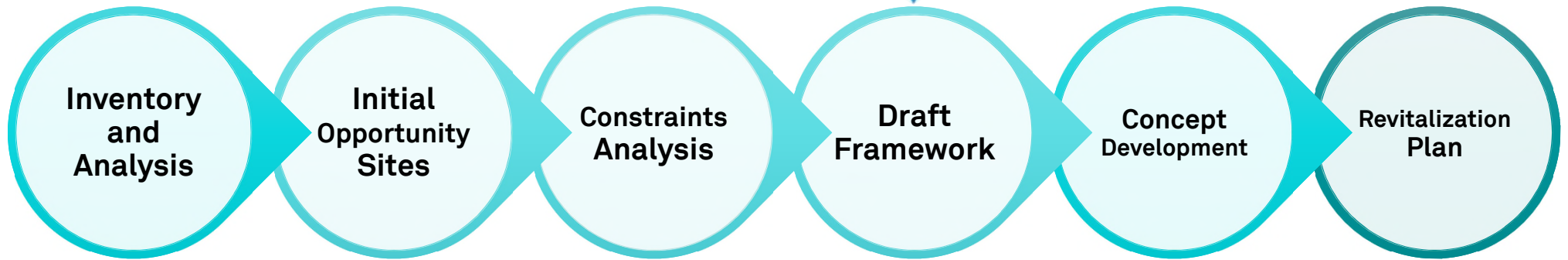
Draft  
Framework

Concept  
Development

Revitalization  
Plan

Community Engagement Plan

Community Outreach





# Plan Development Timeline

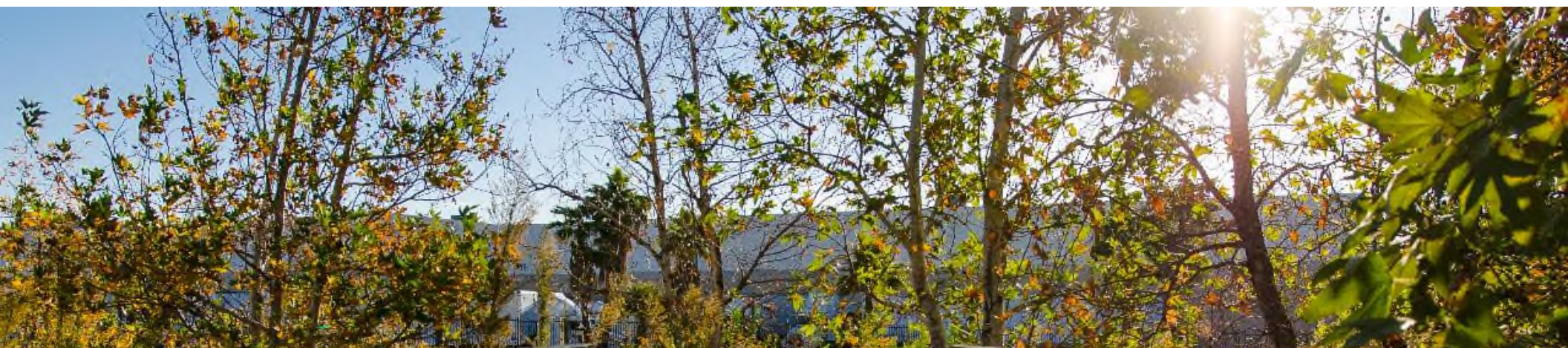
2018

2019

## Phase 1: Community Information Meetings

1. Wednesday, March 13<sup>th</sup> from 6:00PM to 8:00PM  
Discovery Cube  
11800 Foothill Blvd  
Sylmar, CA 91342
2. Wednesday, March 20<sup>th</sup> from 6:30 PM to 8:30 PM  
Los Angeles Zoo  
Witherbee Foundation Auditorium  
5333 Zoo Dr, Los Angeles, CA 90027
3. Thursday , April 4<sup>th</sup> from 6:00 PM to 8:00PM  
Kidspace Children's Museum  
480 N Arroyo Blvd, Pasadena, CA 91103
4. TBD, late March early April





## Committee Member Comments







## Item 10. Announcement of future meetings and adjournment





# AB 466 Contact Information

## Mountains Recreation and Conservation Authority

- Sarah Rascon, Urban River Program Officer

Email: [sarah.rascon@mrca.ca.gov](mailto:sarah.rascon@mrca.ca.gov)

Tel. No. (323) 221-9944, Extension 109

- Melissa Vega, Project Analyst

Email: [melissa.vega@mrca.ca.gov](mailto:melissa.vega@mrca.ca.gov)

Tel. No. (323) 221-9944, Extension 199

## Santa Monica Mountains Conservancy, Board Secretary

Tel. No. (310) 589-3200, Extension 118





# AB 466: Upper Los Angeles River and Tributaries Revitalization Plan

## Water and Environment Committee Meeting

February 28, 2019